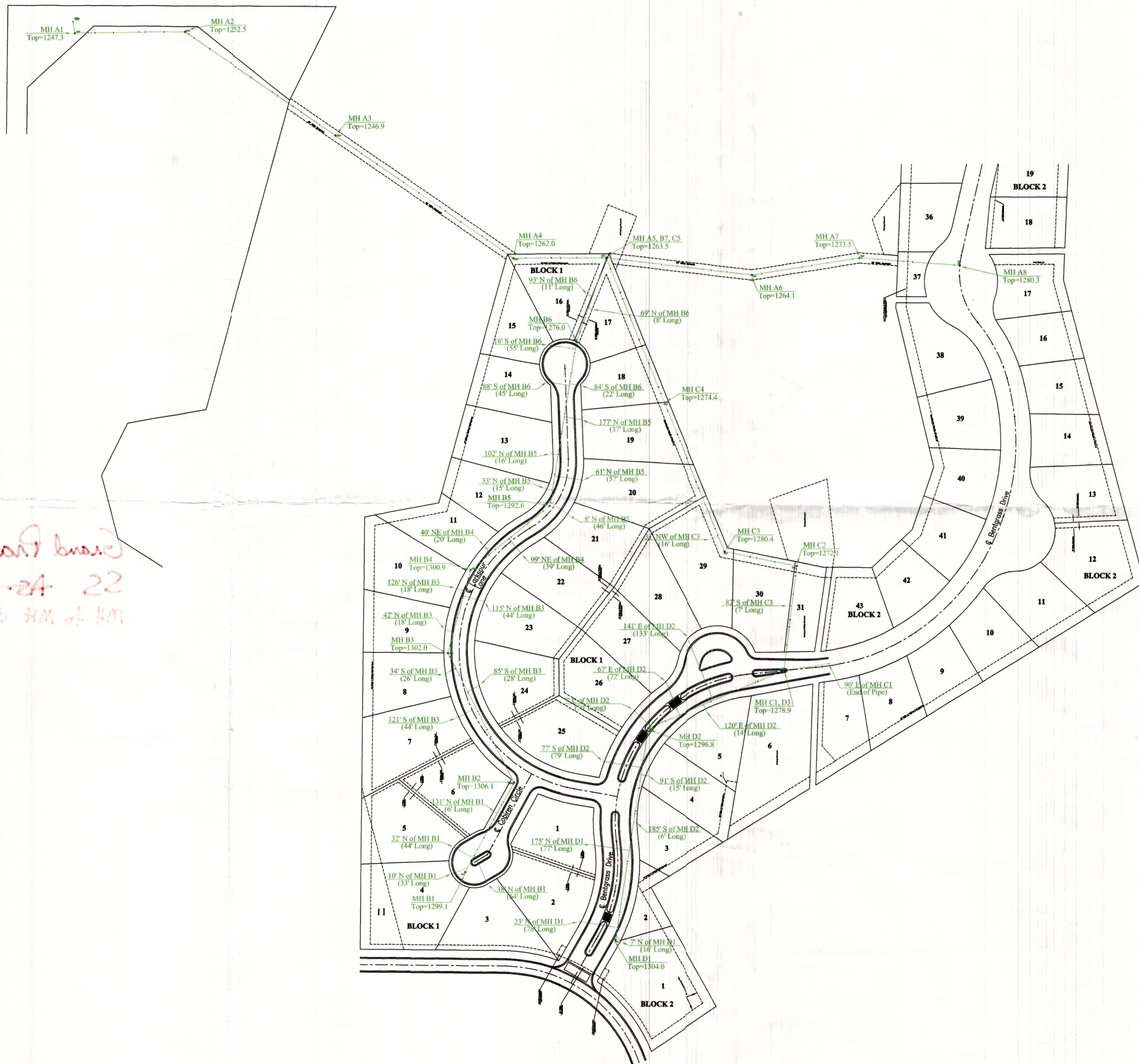


# As-Built Sketch - Sanitary Sewer Grand Prairie Addition City of Salina, KS



*initial block  
4/22/10  
check with HM of HM*

**As-Built Manhole to Manhole Distance**

- A1 to A2 = 218'
- A2 to A3 = 359'
- A3 to A4 = 425'
- A4 to A5 = 183'
- A5 to A6 = 290'
- A6 to A7 = 213'
- A7 to A8 = 199'
  
- C1 to C2 = 209'
- C2 to C3 = 144'
- C3 to C4 = 316'
- C4 to C5 = 304'
  
- C1 to D2 = 292'
- D2 to D1 = 416'
  
- B1 to B2 = 200'
- B2 to B3 = 284'
- B3 to B4 = 167'
- B4 to B5 = 201'
- B5 to B6 = 328'
- B6 to A5 = 173'

**Notes:**

- 1) Sanitary services lines are assumed to be perpendicular to the sanitary sewer main.
- 2) Distance shown are from the center of the manhole lid to the approximate intersection of the service line with the main line.
- 3) The location of the plug end of the service lines as shown on this drawing are taken from field measurements.
- 4) Information shown on this drawing was taken from visible field measurements. Landmark Surveying & Mapping, Inc. is not to be held liable for anything contrary to what is shown on this drawing, that was not visible at the time of the fieldwork. Date of Fieldwork: March 3, 2010



**Landmark**  
SURVEYING & MAPPING INC.

Email: [landmarksurvey@sbcglobal.net](mailto:landmarksurvey@sbcglobal.net)  
 Website: [www.landmarksurveyings.com](http://www.landmarksurveyings.com)  
 Office: (785) 263-2625 Fax: (785) 263-1580  
 301 North Broadway, P.O. Box 97  
 Abilene, Kansas 67410

Date of Plot:	4/2/10	Project #:	10-5928
Drawn By:	JPJ	Client:	Stevens Construction
Checked By:	TR		Sheet 1 of 1