

B.M. 5279 U.S.C.G.S. Brass Cap stamped S279-1947 on the N.E. Cor. of a basement retaining wall on the N.E. Cor. of Asbury Hospital Elev 1229.07

B.M. No. 2A "X" Cut in S.W. Cor. Drinking Fountain Pad near Ball Diamond No.1 Elev 1222.97

Sta. 17+07.97 & Prop Imp. (Kenwood Park Drive) Sta. 6+65.79 Survey & "C"
B.M. No. 7 Spike Step in Light Pole No. 48 West side of road 94.55' Lt from Sta. 23+51.78 Elev 1222.67

Sta. 23+91.58 & Prop Imp. = Sta. 50+00.00 & Kenwood Park Dr B.M. No. 7
B.M. No. 6 Top 1/2" Steel Prop. Pin at S.W. Cor. of Lot 324 South Ohio Elev 1223.09
Sta. 29+08.82 Survey & "C" Sta. 10+00.00 & Ohio St.
Sta. 28+71.41 & Prop Imp. = Sta. 9+67.00 & Ohio St.
Sta. 28+53.28 & Prop Imp. = Sta. 9+67.07 Survey & (Ohio St.)

STA. 16+93.69 BEGIN CONST. of Kenwood Park Drive

STA. 23+75.58 END CONST. of The Midway

STA. 22+26 END CONST. of Kenwood Park Drive

STA. 17+44.95 END PAVT. CONST. of Kenwood Park Drive

STA. 8+90 BEGIN CONST. of Kenwood Park Drive

STA. 25+51.00 BEGIN CONST. of Kenwood Park Drive

STA. 28+25 END CONST. of Kenwood Park Drive

STA. 12+50 END CONST. of Kenwood Park Drive

STA. 9+18.69 BEGIN CONST. of Kenwood Park Drive

DESIGNATED STORAGE AREA FOR REMOVAL ITEMS BY CONTRACTOR FOR REMOVAL BY OWNER.

NOTE: CONTRACTOR SHALL EXCAVATE FROM THE SITE GRADING AREAS 3,200 CU. YDS. AND STOCKPILE ON THE AREA SHOWN FOR REMOVAL BY OTHERS.

Note: See Sheet No. C-6 for Legend. See Sheet No. C-3 for location of proposed new sanitary sewer lines and water system layout.

NOTE: STA. 24+07.58 TO STA. 28+53.28 OF THE MIDWAY SHALL BE CONSTRUCTED BY OTHERS AND SHALL NOT BE A PART OF THIS CONTRACT. THE SYMBOL "X" SHOWN ON THE VARIOUS PLAN SHEETS SHALL INDICATE CONSTRUCTION BY OTHERS.

B.M. No. 1 Spike Step in North Power Pole on S.W. Cor. of Intersection of 4th and South Streets Elev 1227.87

B.M. No. 2 Spike Step in Light Pole 83.55' NINE. from N Post of Left Field fence on Baseball Diamond next to Track and 130.78' S.E. of E. side of SW. to N.E. sidewalk Elev 1222.91

B.M. No. 3 Spike Step in Tele. Pole on the S.E. Cor. of Island at the intersection of Front St and Kenwood Park Drive Elev 1225.96

B.M. No. 2B "X" Cut on Top of Curb on North Nose of Island by Ag. Hall Elev 1223.26

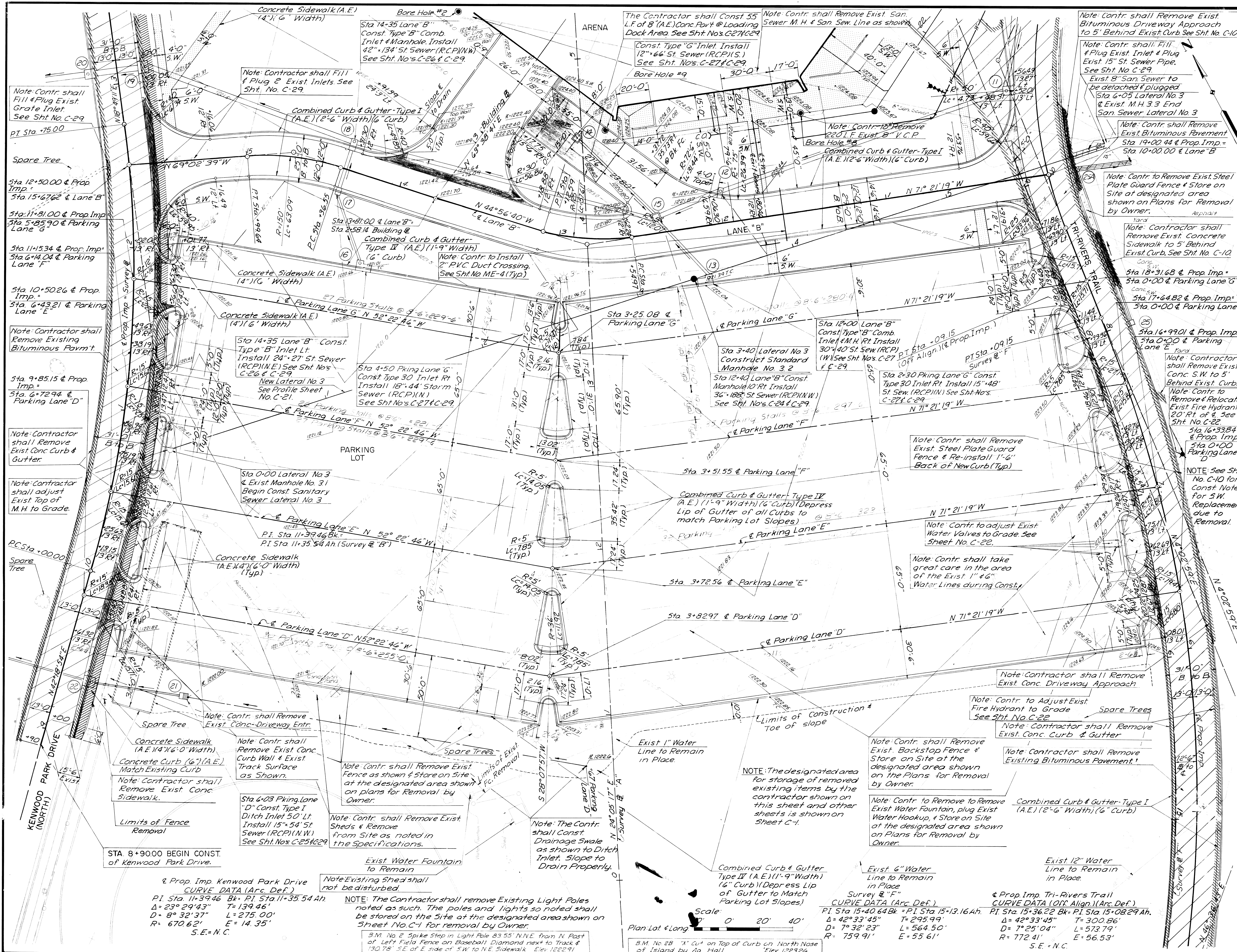
B.M. No. 9 "D" Cut in N.E. Cor. of Sidewalk Slab at N.W. Cor. of the River Bridge on Greeley Ave. Elev 1223.98

CONSULTING ENGINEERS PLANNERS & ARCHITECTS SALINA, KAN.

BUCHER & WILLS

DRAWN BY D.M.A.
CHECKED BY C.E.
DATE 7-15-71
REVISIONS

SHEET NO.
C-1



& Prop. Imp. Kenwood Park Drive
 CURVE DATA (Arc. Def.)
 P.I. Sta 11+39.46 Bk. = P.I. Sta 11+35.54 Ah.
 $\Delta = 23^\circ 29' 43''$ $T = 139.46'$
 $D = 8^\circ 32' 37''$ $L = 275.00'$
 $R = 670.62'$ $E = 14.35'$
 S.E. = N.C.

NOTE: The Contractor shall remove Existing Light Poles noted as such. The poles and lights so noted shall be stored on the site at the designated area shown on Sheet No. C-1 for removal by Owner.

Scale: 1" = 20'
 Plan, Lot & Long

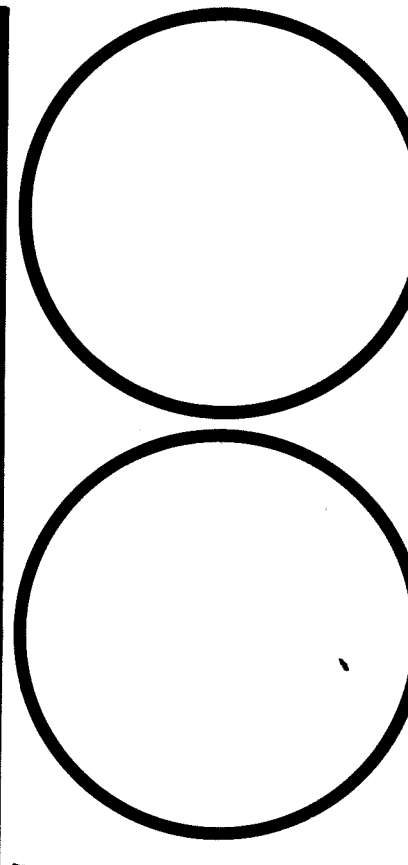
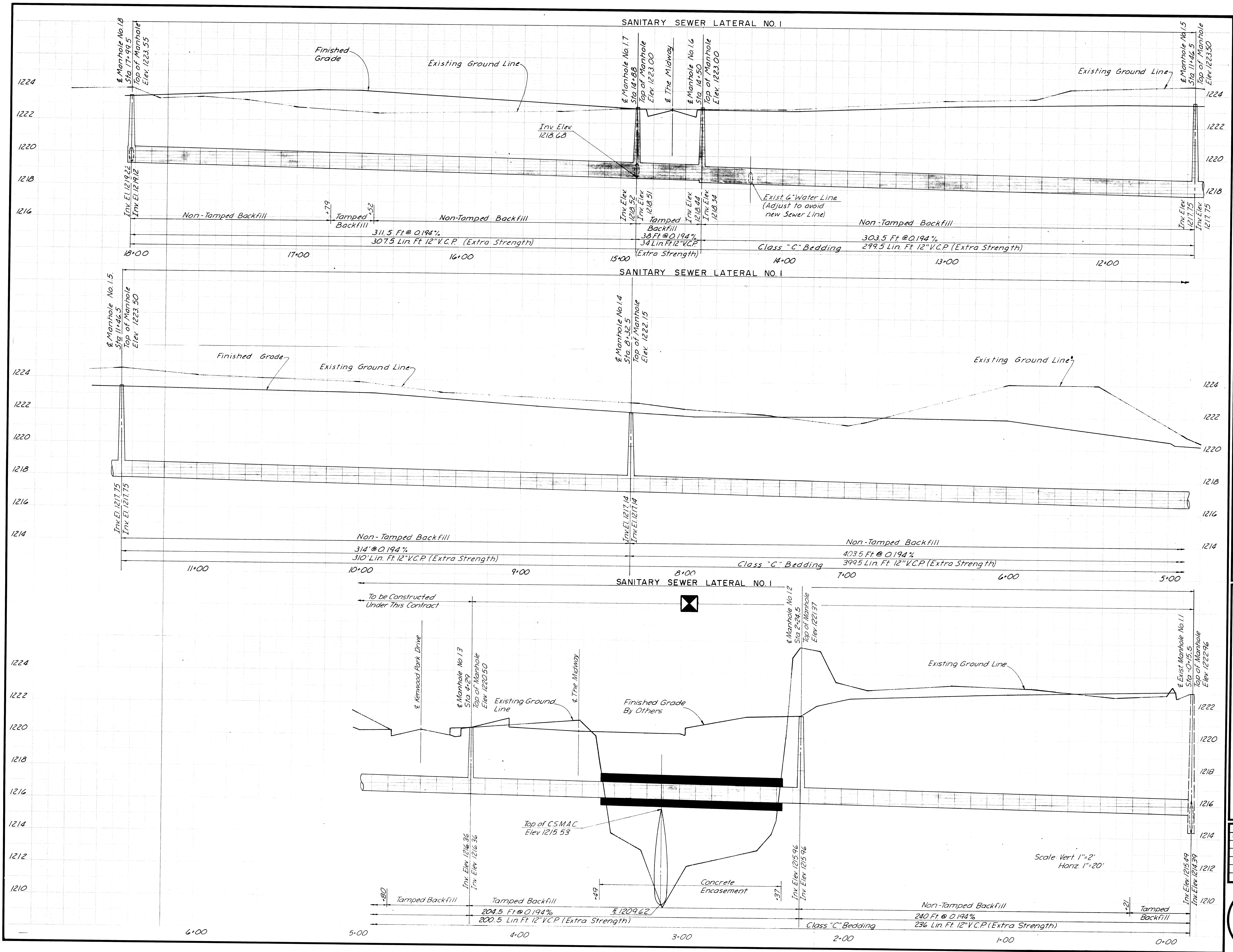
CURVE DATA (Arc. Def.)
 P.I. Sta 15+40.64 Bk. = P.I. Sta 15+13.16 Ah.
 $\Delta = 42^\circ 33' 45''$ $T = 295.99'$
 $D = 7^\circ 32' 23''$ $L = 564.50'$
 $R = 759.91'$ $E = 55.61'$

CURVE DATA (Off. Align.) (Arc. Def.)
 P.I. Sta 15+36.22 Bk. = P.I. Sta 15+08.29 Ah.
 $\Delta = 42^\circ 33' 45''$ $T = 300.86'$
 $D = 7^\circ 25' 04''$ $L = 573.79'$
 $R = 772.41'$ $E = 56.53'$
 S.E. = N.C.

STA 8+9000 BEGIN CONST. of Kenwood Park Drive.

B.M. No 28 "X" Cut on Top of Curb on North Nose of Island by Ag. Hall Elev. 1222.6

B.M. No 2 Spike Step in Light Pole 83.55' NINE from N. Post of Left Field Fence on Baseball Diamond next to Track & 130.78' SE of E side of SW to NE Sidewalk Elev. 1222.91



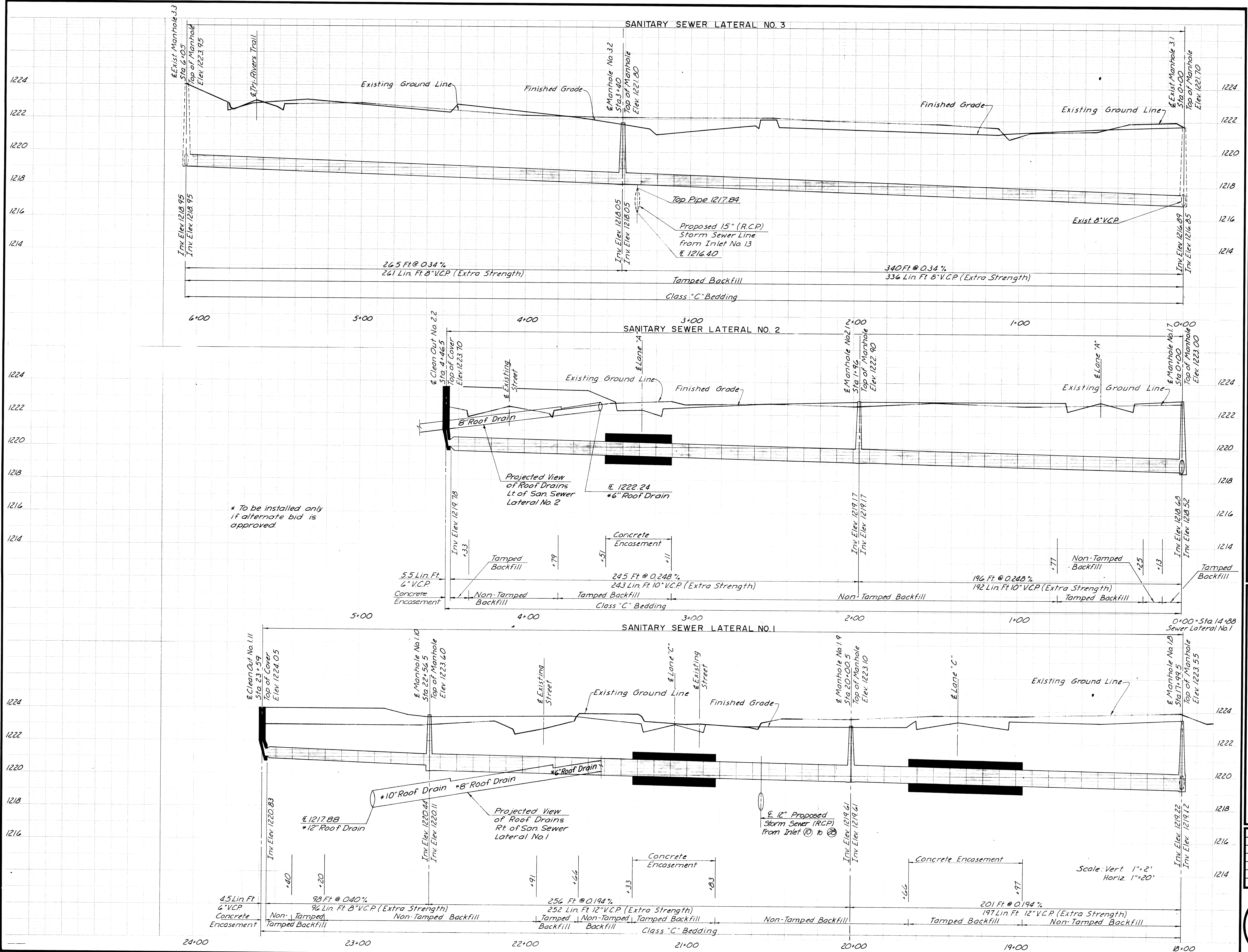
SANITARY SEWER PROFILES
BICENTENNIAL COMMUNITY CENTER
SALINA, KANSAS

CONSULTING ENGINEERS
 PLANNERS & ARCHITECTS
BUCHER & WILLS
 SALINA, KANSAS
 KANSAS CITY, MO.

DRAWN BY SRH
 CHECKED BY DWN
 DATE 7-14-77
 REVISIONS

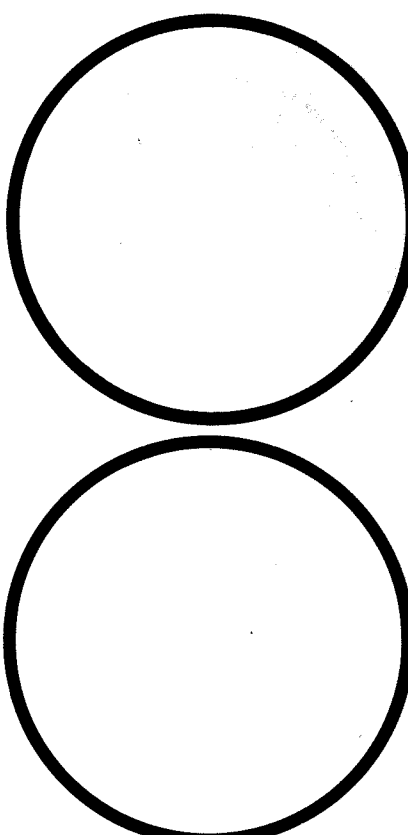
SHEET NO.
C-20

Scale Vert 1"=2'
Horiz 1"=20'



* To be installed only if alternate bid is approved.

Scale: Vert 1"=2'
Horiz. 1"=20'



SANITARY SEWER PROFILES
BICENTENNIAL COMMUNITY CENTER
SALINA, KANSAS

CONSULTING ENGINEERS
PLANNERS & ARCHITECTS
SALINA, KANSAS
KANSAS CITY, MO.

BUCHER & WILLIS

DRAWN BY S.R.H.
CHECKED BY D.W.N.
DATE 7-14-77
REVISIONS

SHEET NO.
C-21