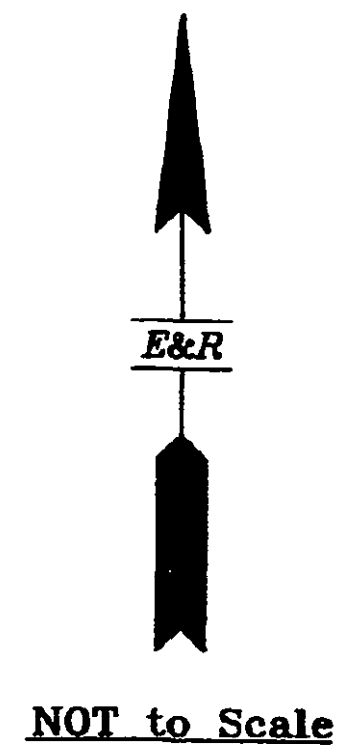
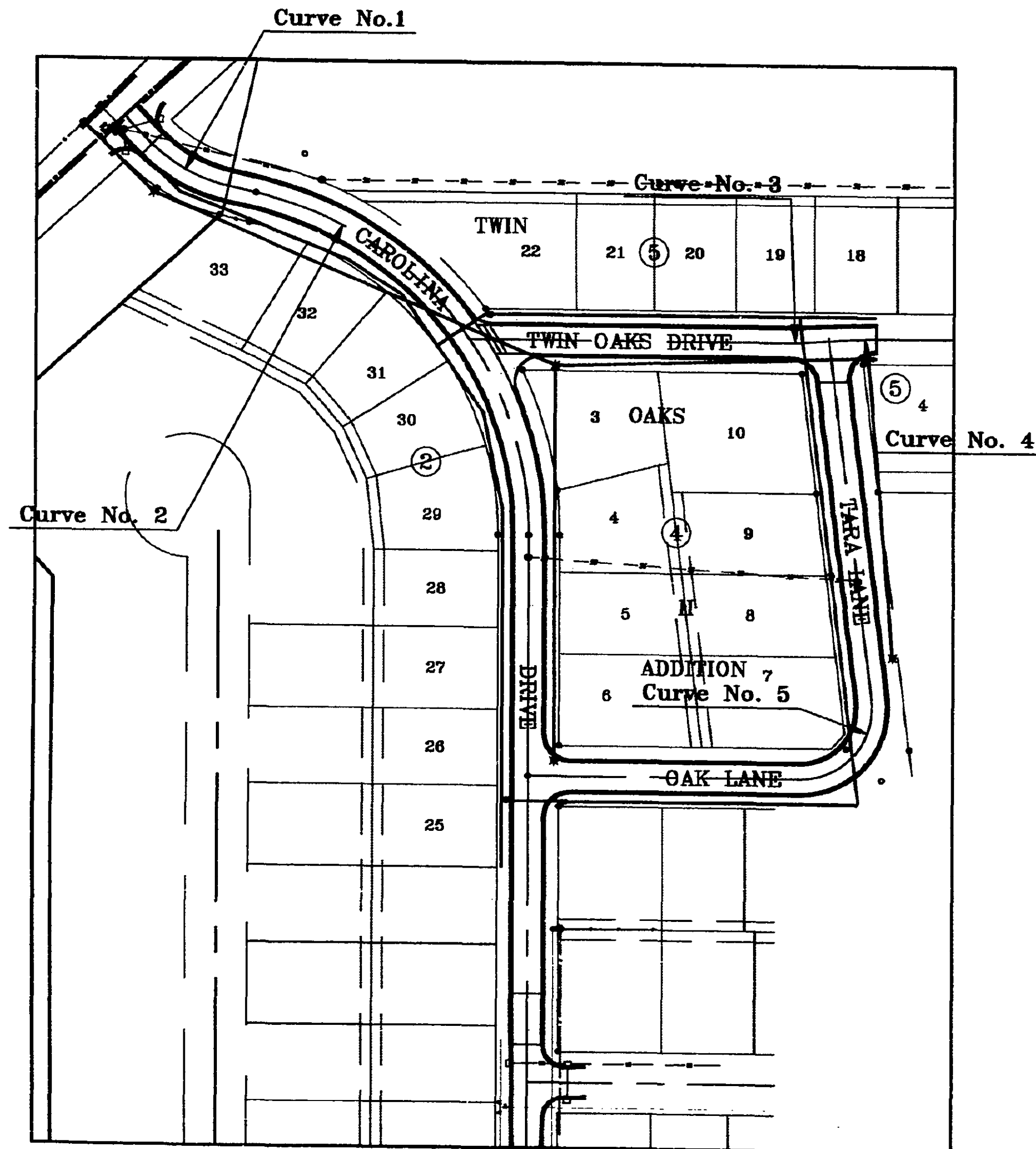


# Haworth Construction Twin Oaks II Addition City of Salina, Kansas



NOT to Scale

Curve # 1  
 $\Delta = 3113'58''$   
 $R = 155.57'$   
 $T = 43.48'$   
 $L = 84.81'$

Curve # 2  
 $\Delta = 7713'58''$   
 $R = 340.00'$   
 $T = 271.58'$   
 $L = 458.31'$

Curve # 3  
 $\Delta = 3'48'48''$   
 $R = 125.00'$   
 $T = 4.16'$   
 $L = 8.32'$

Curve # 4  
 $\Delta = 3'48'48''$   
 $R = 125.00'$   
 $T = 4.16'$   
 $L = 8.32'$

Curve # 5  
 $\Delta = 96'53'06''$   
 $R = 70.00'$   
 $T = 78.96'$   
 $L = 118.37'$

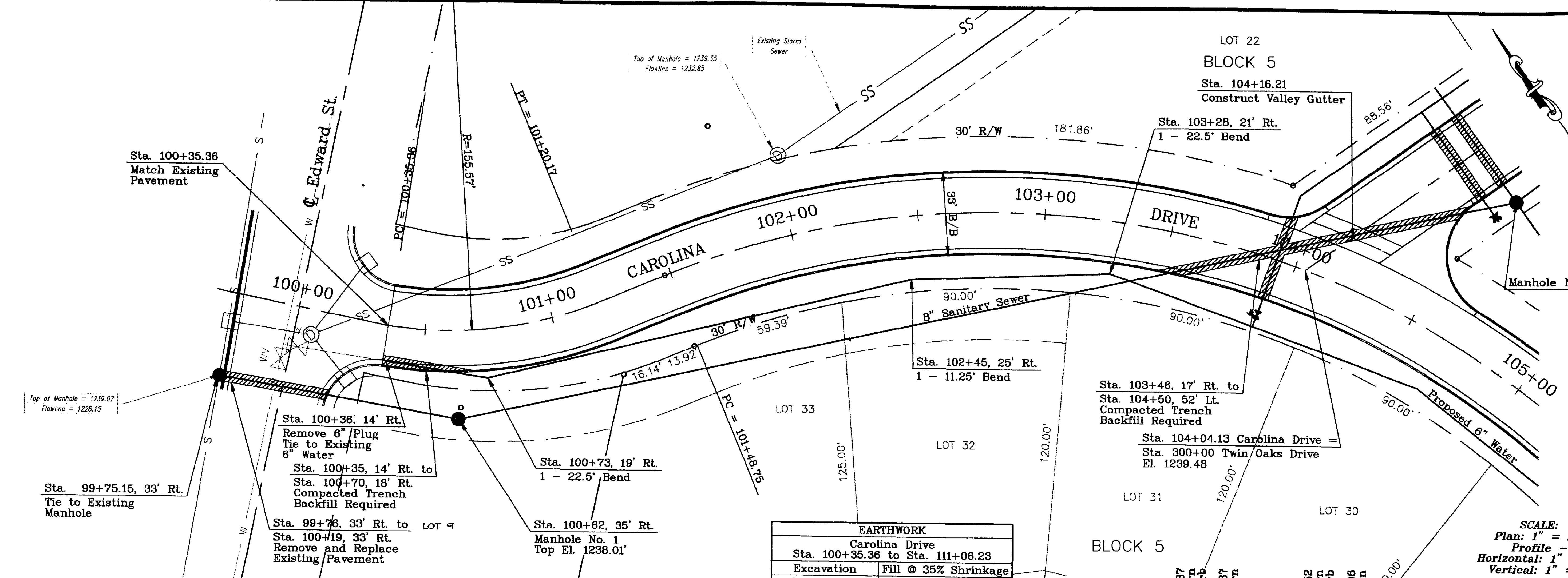
LEGEND	
	Compacted Trench Backfill Required
	Existing Property Pin
	Proposed Construction
	Right of Way
	Curb and Gutter
	Fire Hydrant
	Water Valve
	Denotes Bend in Water Line
	Denotes Water Line Tee
	Water / Sewer Line
	Sewer Manhole
	Storm Sewer Manhole
	Existing Storm Sewer Line
	Existing Water Line

*Earles & Riggs*  
 ENGINEERS - PLANNERS - LANDSCAPE ARCHITECTS  
 LINDBORG, KANSAS

Project Number: 93-36

Additional Drawing Info: XREF Files used this drawing.  
 Path: F:\WORK 94\SALINA HAWORTH  
 Title: Plan and Profile  
 Description: Haworth Construction, City of Salina, Kansas

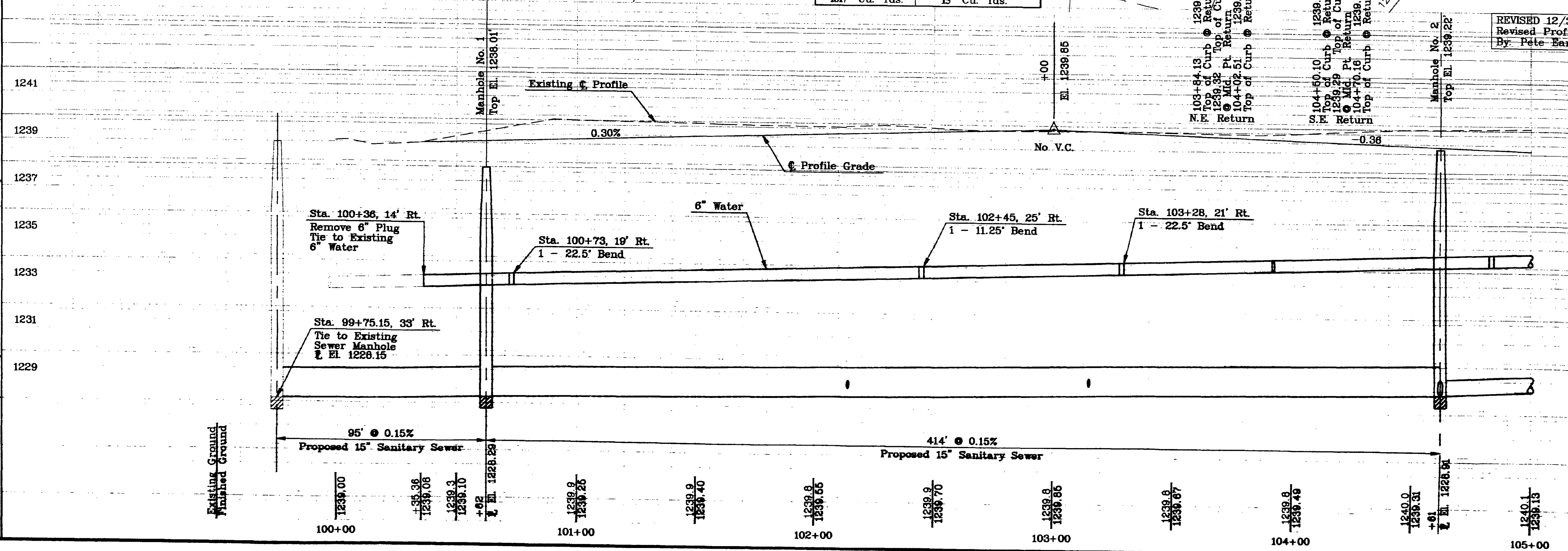
Farles & Riggs  
 Engineers - Planners - Landscape Architects  
 Project: 93-36  
 Filename: 9336-Pl.DWG



EARTHWORK	
Carolina Drive	
Sta. 100+35.36 to Sta. 111+06.23	
Excavation	Fill @ 35% Shrinkage
1817 Cu. Yds.	15 Cu. Yds.

SCALE:  
 Plan: 1" = 20'  
 Profile: -  
 Horizontal: 1" = 20'  
 Vertical: 1" = 2'

REVISED 12/30/94  
 Revised Profile Grade  
 By: Pete Earles



Additional Drawing Info: XREF Files used this drawing.

Project: 93-36 Path: F:\WORK\94\SALINA\HAWORTH

Title: Plan and Profile Description: Haworth Construction, City of Salina, Kansas

Filename: 9336-P2.DWG

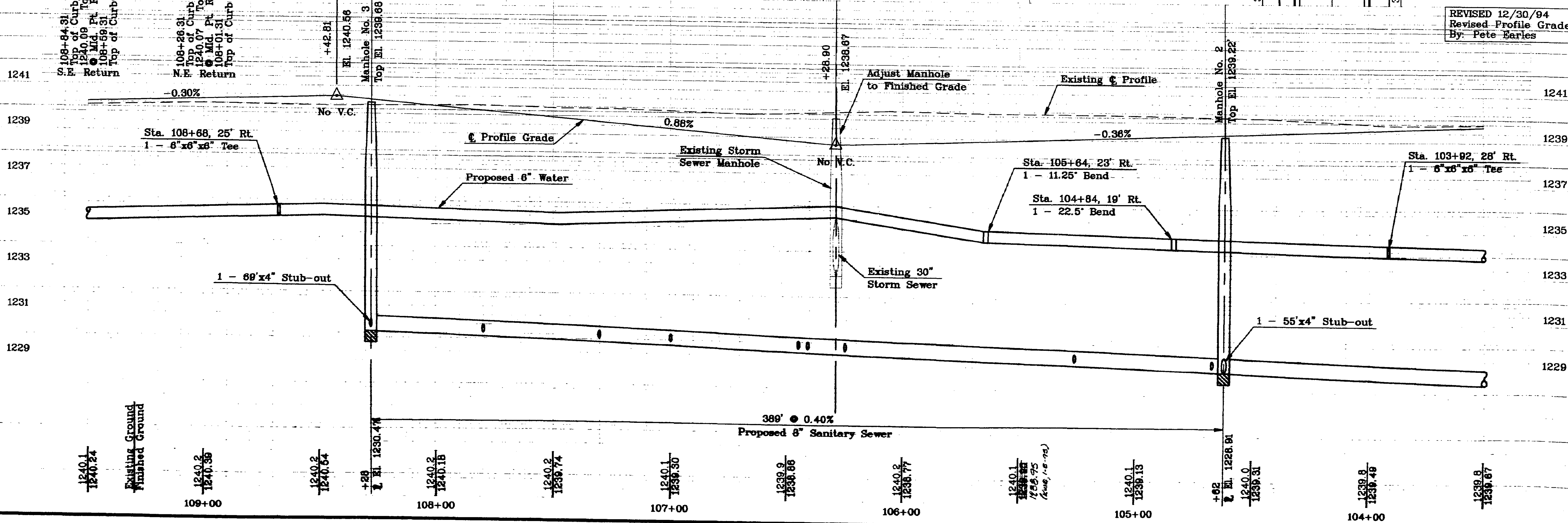
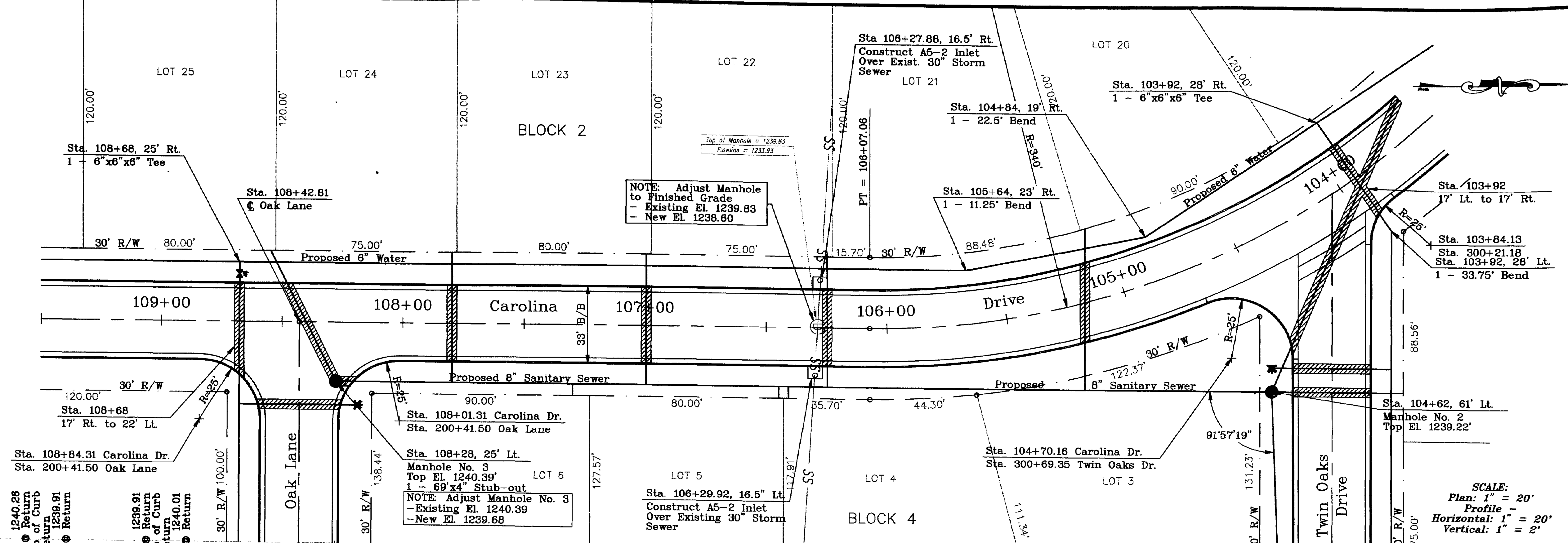
Earles & Riggs

Engineers - Planners - Landscape Architects

Project: 93-36

Title: Plan and Profile

Description: Haworth Construction, City of Salina, Kansas

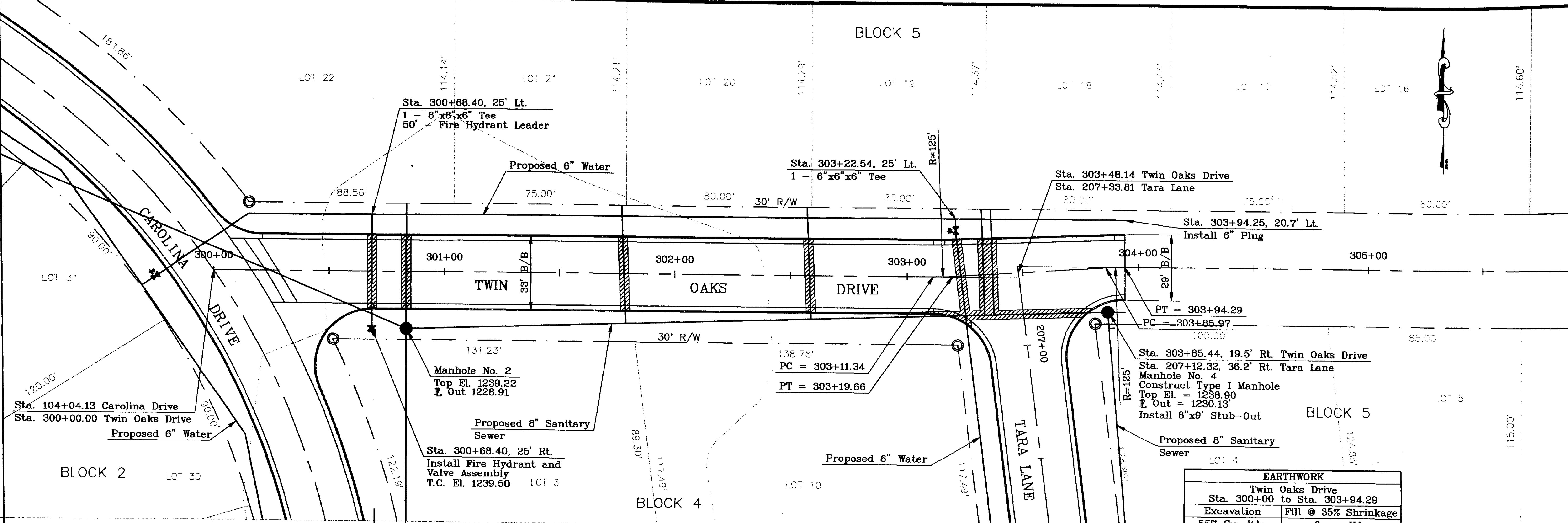


SCALE:  
 Plan: 1" = 20'  
 Profile: 1" = 20'  
 Horizontal: 1" = 20'  
 Vertical: 1" = 2'

REVISED 12/30/94  
 Revised Profile Grade  
 By: Pete Earles

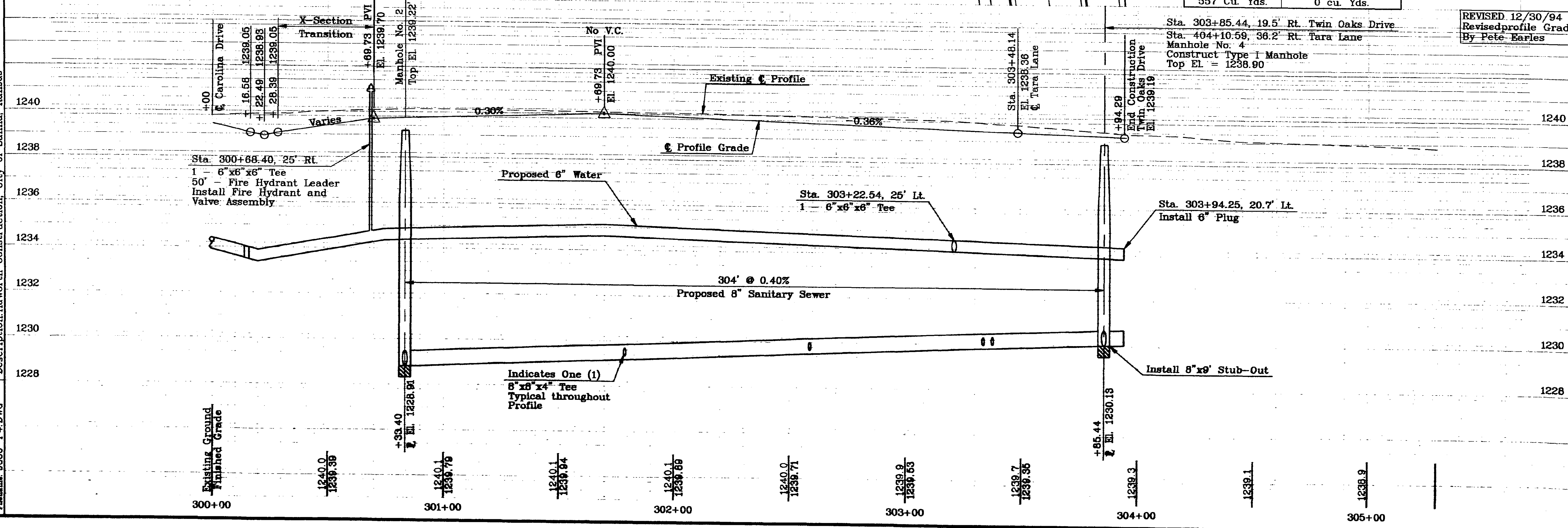


BLOCK 5

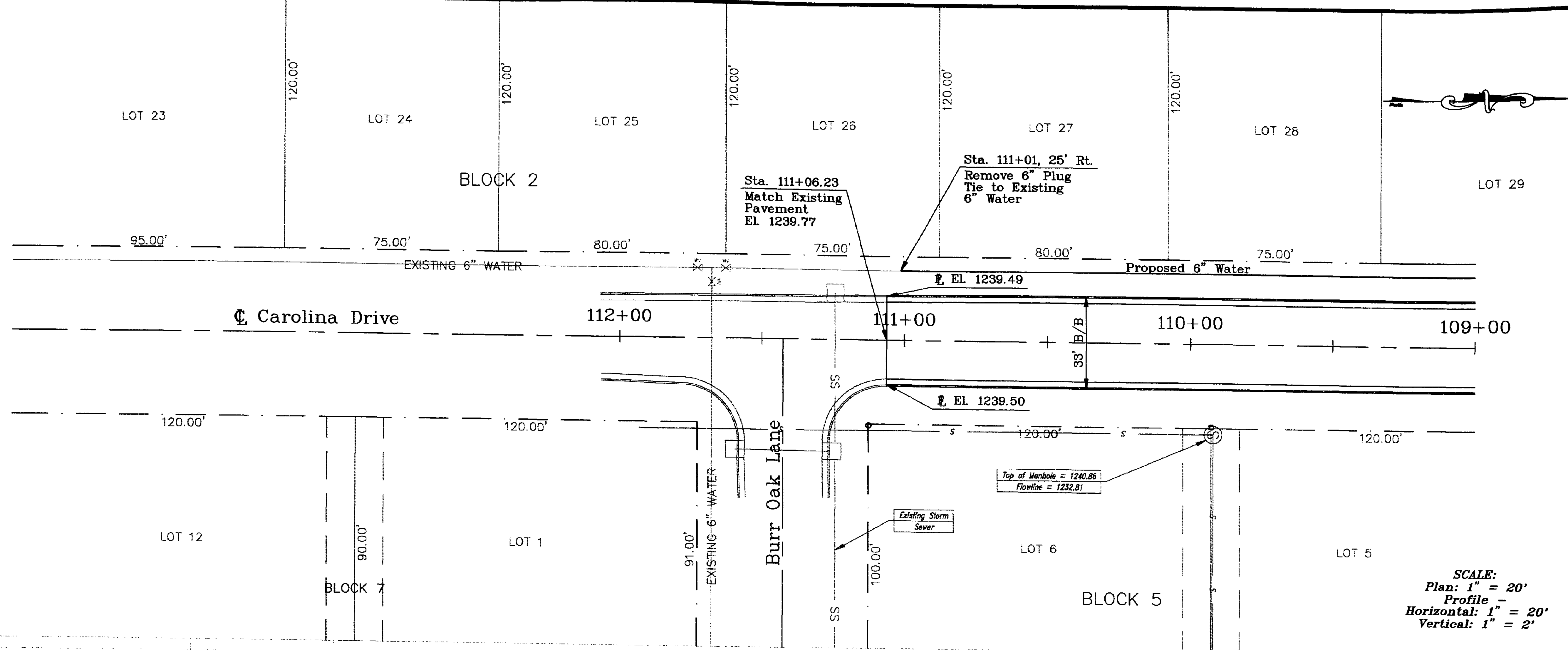


EARTHWORK	
Twin Oaks Drive Sta. 300+00 to Sta. 303+94.29	
Excavation	Fill @ 35% Shrinkage
557 Cu. Yds.	0 cu. Yds.

REVISED 12/30/94  
Revised profile Grade  
By Pete Earles

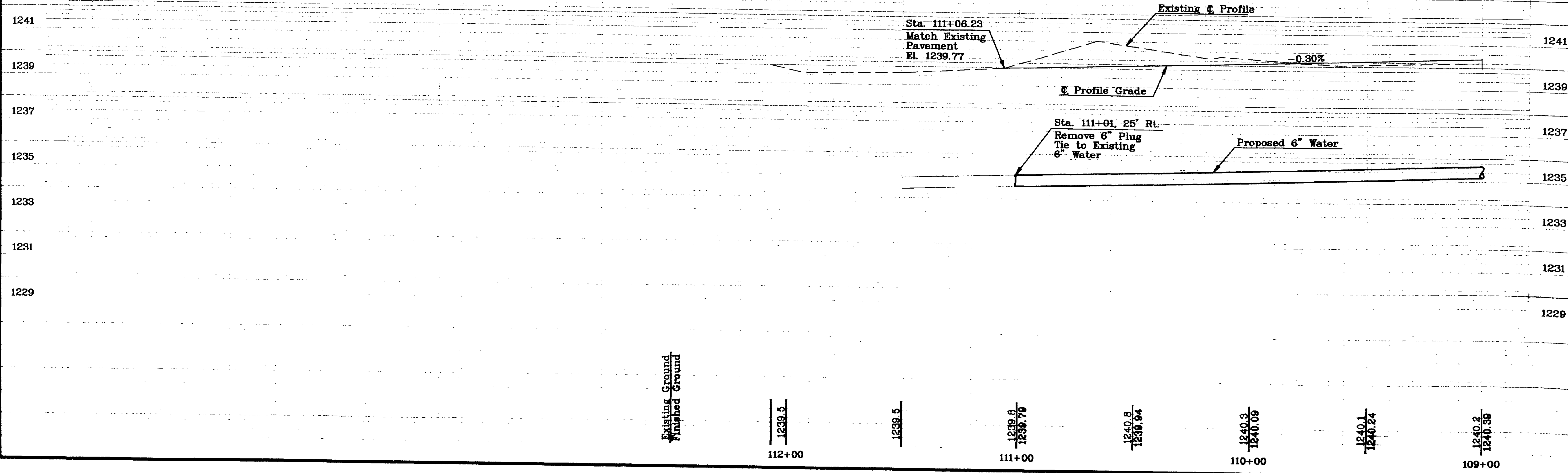


Additional Drawing Info: XREF Files used this drawing.  
 Path: F:\WORK\94\SALINA\HAWORTH  
 Title: Plan and Profile  
 Description: Haworth Construction, City of Salina, Kansas  
 Project: 93-36  
 Filename: 9336-P4.DWG



SCALE:  
 Plan: 1" = 20'  
 Profile -  
 Horizontal: 1" = 20'  
 Vertical: 1" = 2"

REVISED 12/30/94  
 Revised Profile Grade  
 By: Pete Earles

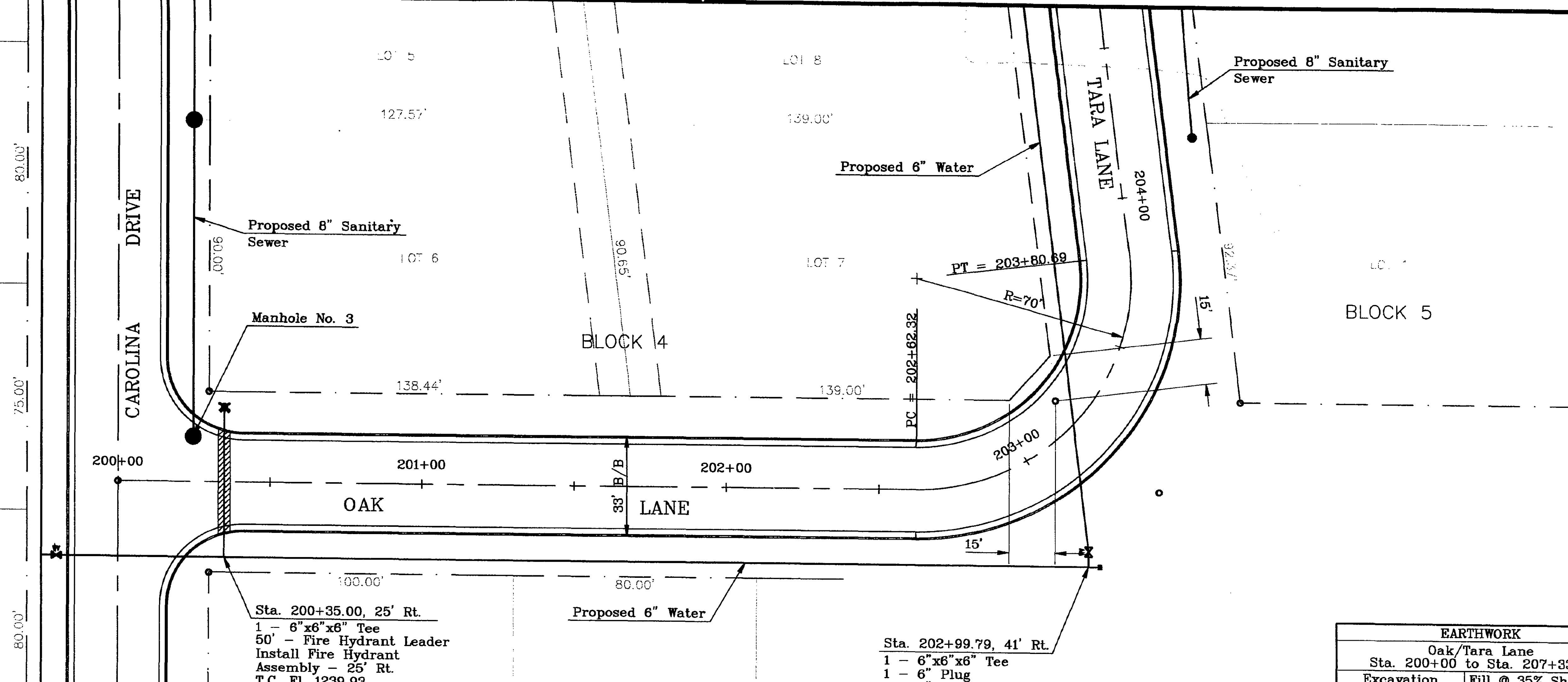


Existing Ground  
 Finished Ground

112+00	111+00	110+00	109+00
1239.5	1239.5	1240.3 1239.79	1240.2 1240.39
		1240.8 1239.94	1240.1 1240.24
		1240.3 1240.09	

Additional Drawing Info:  
 Path: F:\WORK\94\SALINA\HAWORTH  
 Title: Plan and Profile  
 Description: Haworth Construction, City of Salina, Kansas

Earles & Riggs  
 Engineers - Planners - Landscape Architects  
 Project: 93-36  
 Filename: 9336-P3.DWG



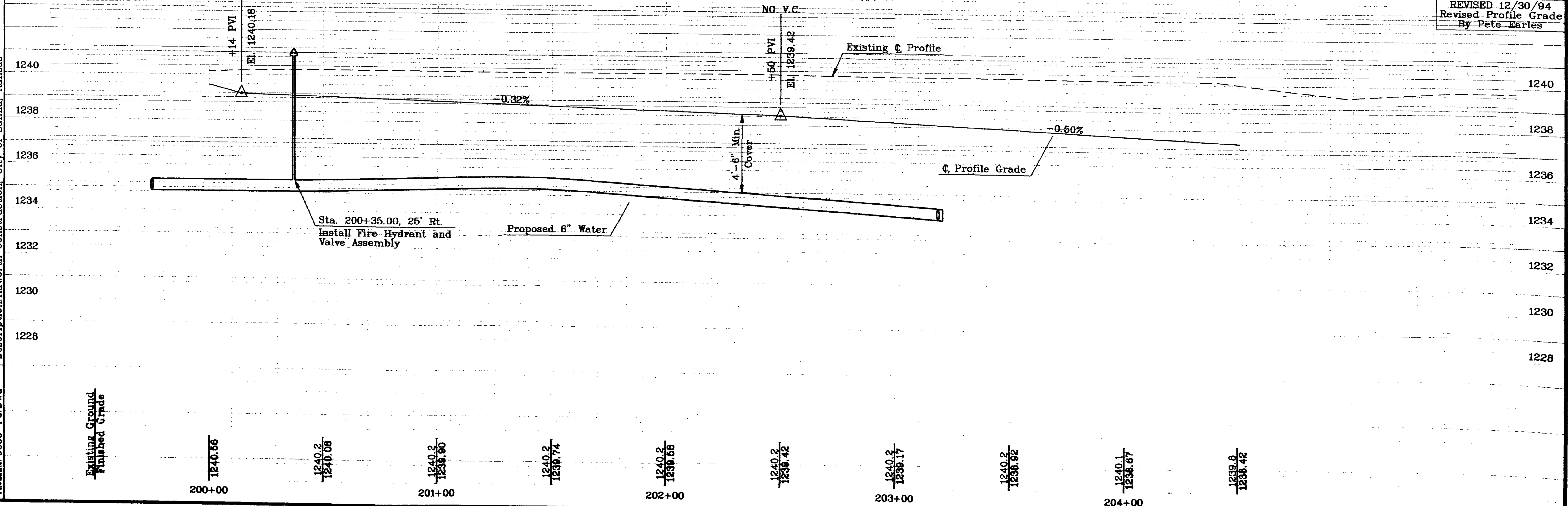
Sta. 200+35.00, 25' Rt.  
 1 - 6"x6"x6" Tee  
 50' - Fire Hydrant Leader  
 Install Fire Hydrant  
 Assembly - 25' Rt.  
 T.C. EL 1239.93

Sta. 202+99.79, 41' Rt.  
 1 - 6"x6"x6" Tee  
 1 - 6" Plug  
 1 - 6" Gate Valve

EARTHWORK	
Oak/Tara Lane	
Sta. 200+00 to Sta. 207+33.81	
Excavation	Fill @ 35% Shrinkage
1,893 Cu. Yds.	4 Cu. Yds.

SCALE:  
 Plan: 1" = 20'  
 Profile -  
 Horizontal: 1" = 20'  
 Vertical: 1" = 2'

REVISED 12/30/94  
 Revised Profile Grade  
 By Pete Earles



Additional Drawing Info: XREF files used in this drawing.  
 Path: F:\WORK\94\SALINA\HAWORTH  
 Title: Plan and Profile  
 Description: Haworth Construction, City of Salina, Kansas

Earles & Riggs  
 Engineers - Planners - Landscape Architects  
 Project: 93-36  
 Filename: 9336-P6.DWG