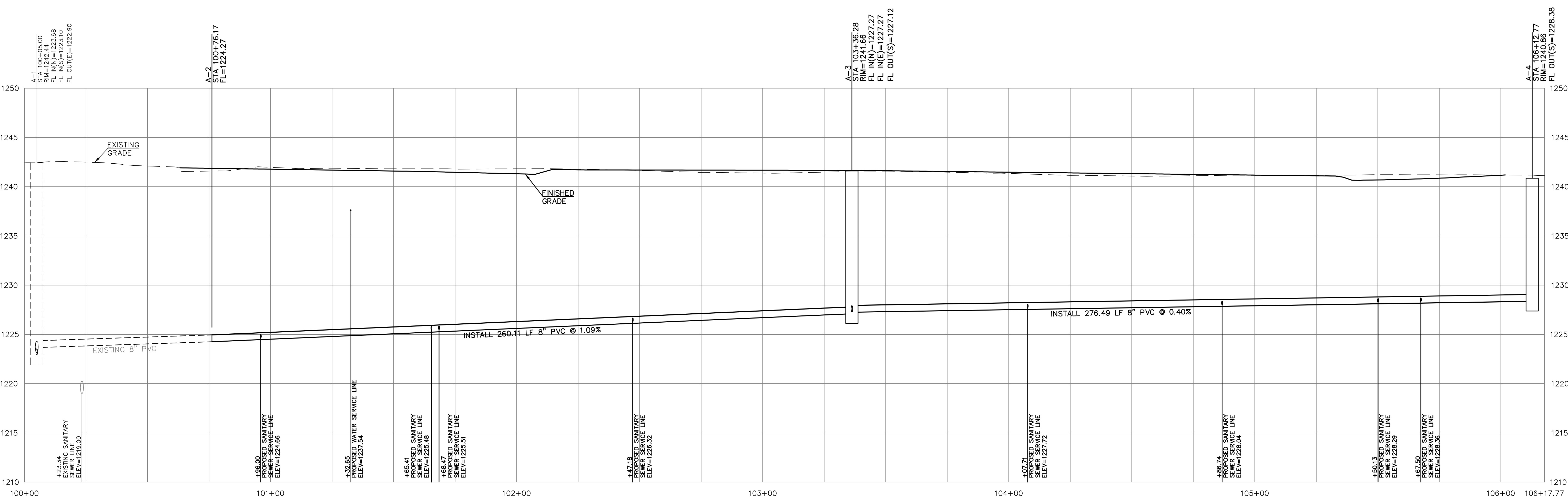
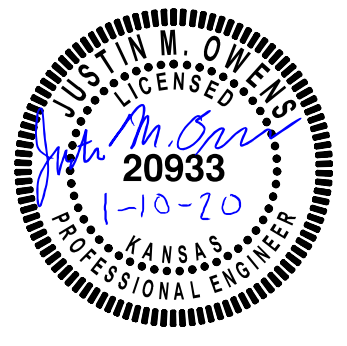


- SEPARATION OF WATER MAINS AND SANITARY SEWERS:**
1. A MINIMUM HORIZONTAL DISTANCE OF 10 FEET SHALL BE MAINTAINED BETWEEN WATER (MAINS AND SERVICE) AND SANITARY SEWER (MAINS AND SERVICE) LINES. AT POINT WHERE SEWERS CROSS WATER MAINS, THE SEWER SHALL BE CONSTRUCTED OF CAST IRON, PLASTIC PIPE WITH NON-JOINTED PLASTIC PIPE, OR PIPE ENCASED IN CONCRETE FOR A DISTANCE OF 10 FEET EACH SIDE OF THE CROSSING AS MEASURED FROM THE OUTSIDE DIAMETER OF THE SEWER LINE (EDGE-TO-EDGE), NOT ITS CENTERLINE, UNLESS THE WATER MAIN IS AT LEAST 2 FEET ABOVE THE SEWER.
 2. WHERE A WATER MAIN MUST CROSS A SEWER LINE, MAINTAIN 2 FEET VERTICAL SEPARATION WITH THE WATER MAIN ABOVE THE SEWER.
 3. BUILDERS TO MAINTAIN MINIMUM 10' SEPARATION FROM THE OUTSIDE EDGE OF SANITARY SEWER MANHOLES TO THE OUTSIDE EDGE OF WATER SERVICE LINES WHEN RUNNING SERVICE LINES TO HOUSE.
 4. ALL SANITARY SEWER SERVICE LINE WILL BE AT A MIN 2% GRADE.
 5. ALL NORTHING AND EASTING WAS TAKEN FROM CENTER OF STRUCTURE. REFERENCE DETAIL FOR ACTUAL LID LOCATION.

SCALE:
 PLAN: 1"=20'
 PROFILE: 1"=20" HORIZ.
 1"=5" VERT.



REV	DATE	DESCRIPTION
2	01/10/20	REVISED PER KDHE COMMENTS
1	10/17/19	REVISED
0	10/04/19	INITIAL ISSUE



JUSTIN M. OWENS
 ENGINEER
 KS # 20933

742 DUVAL AVENUE
 SALINA, KANSAS 67401
 PH. (785) 820-1200
 www.kawvalley.com

KAW VALLEY ENGINEERING

KAW VALLEY ENGINEERING, INC. IS AUTHORIZED TO OFFER ENGINEERING SERVICES BY KANSAS STATE CERTIFICATE OF AUTHORIZATION # E-113. EXPIRES 12/31/20

STONE LAKE ADDITION - PHASE 3A
CRYSTAL LAKE DRIVE & WET STONE DRIVE
SALINA, KANSAS 67401

OFFICE CHECK
 SANITARY SEWER LINE 'A' - PLAN & PROFILE

DESIGNER	JMO	DRAWN BY	TDA
CFN	2272SPP	SHEET	25
REV	2	DSN	DWN
CHK	JMO	TDA	JMO

THIS DRAWING SHALL NOT BE UTILIZED BY ANY PERSON, FIRM, OR CORPORATION IN WHOLE OR IN PART WITHOUT THE SPECIFIC PERMISSION OF KAW VALLEY ENGINEERING, INC.