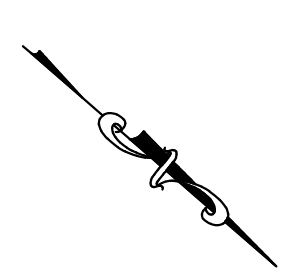


- SEPARATION OF WATER MAINS AND SANITARY SEWERS.**
1. A MINIMUM HORIZONTAL DISTANCE OF 10 FEET SHALL BE MAINTAINED BETWEEN WATER MAINS AND SERVICE) AND SANITARY SEWER (MAINS AND SERVICE) LINES. A POINT WHERE SEWERS CROSS SHALL BE MARKED WITH A 4" DIA. CONCRETE OR METAL MANHOLE. THE SEWER SHALL BE ON THE NON-JOINTED PLASTIC PIPE OR PIPE ENCASED IN CONCRETE FOR A DISTANCE OF 10 FEET EACH SIDE OF THE CROSSING AS MEASURED FROM THE OUTSIDE DIAMETER OF THE SEWER LINE (EDGE-TO-EDGE), NOT ITS CENTERLINE, UNLESS THE WATER MAIN IS AT LEAST 2 FEET ABOVE THE SEWER.
  2. WHERE A WATER MAIN MUST CROSS A SEWER LINE, MAINTAIN 2 FEET VERTICAL SEPARATION WITH THE WATER MAIN ABOVE THE SEWER.
  3. BUILDERS TO MAINTAIN MINIMUM 10' SEPARATION FROM THE OUTSIDE EDGE OF SANITARY SEWER MANHOLES TO THE OUTSIDE EDGE OF WATER SERVICE LINES WHEN RUNNING SERVICE LINES TO HOUSE.
  4. ALL SANITARY SEWER SERVICE LINE WILL BE AT A MIN 2% GRADE.
  5. ALL NORTHING AND EASTING WAS TAKEN FROM CENTER OF STRUCTURE. REFERENCE DETAIL FOR ACTUAL LID LOCATION.

SCALE:  
 PLAN: 1"=20'  
 PROFILE: 1"=20' HORIZ.  
 1"=5' VERT.



THIS DRAWING SHALL NOT BE UTILIZED BY ANY PERSON, FIRM, OR CORPORATION IN WHOLE OR IN PART WITHOUT THE SPECIFIC PERMISSION OF KAW VALLEY ENGINEERING, INC.

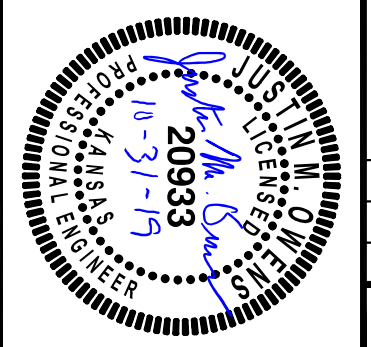
<b>STONE LAKE ADDITION - PHASE 2</b>	
<b>SHORELINE DRIVE</b>	
<b>SALINA, KANSAS 67401</b>	
<b>SANITARY SEWER LINE 'B' - PLAN &amp; PROFILE</b>	
PROJ. NO.	E1802116
DESIGNER	MO
DRAWN BY	DJA
CHK	2116SP
SHEET	15
REV	2

742 DUVALL AVENUE  
 SALINA, KANSAS 67401  
 PH. (785) 823-3400 | FAX (785) 823-3411  
 sa@kveeng.com | www.kveeng.com

**KAW VALLEY ENGINEERING**

KAW VALLEY ENGINEERING, INC. IS AUTHORIZED TO OFFER ENGINEERING SERVICES BY KANSAS STATE CERTIFICATE OF AUTHORIZATION # E-113. EXPIRES 12/31/20

JUSTIN M. OWENS  
 ENGINEER  
 KS # 20933



REV	DATE	DESCRIPTION	DSN	DWN	CHK
2	10/31/19	PER KDHE COMMENTS	JMO	TDA	JMO
1	07/31/19	PER KDHE COMMENTS	JMO	TDA	JMO
0	05/31/19	INITIAL ISSUE	JMO	TDA	JMO