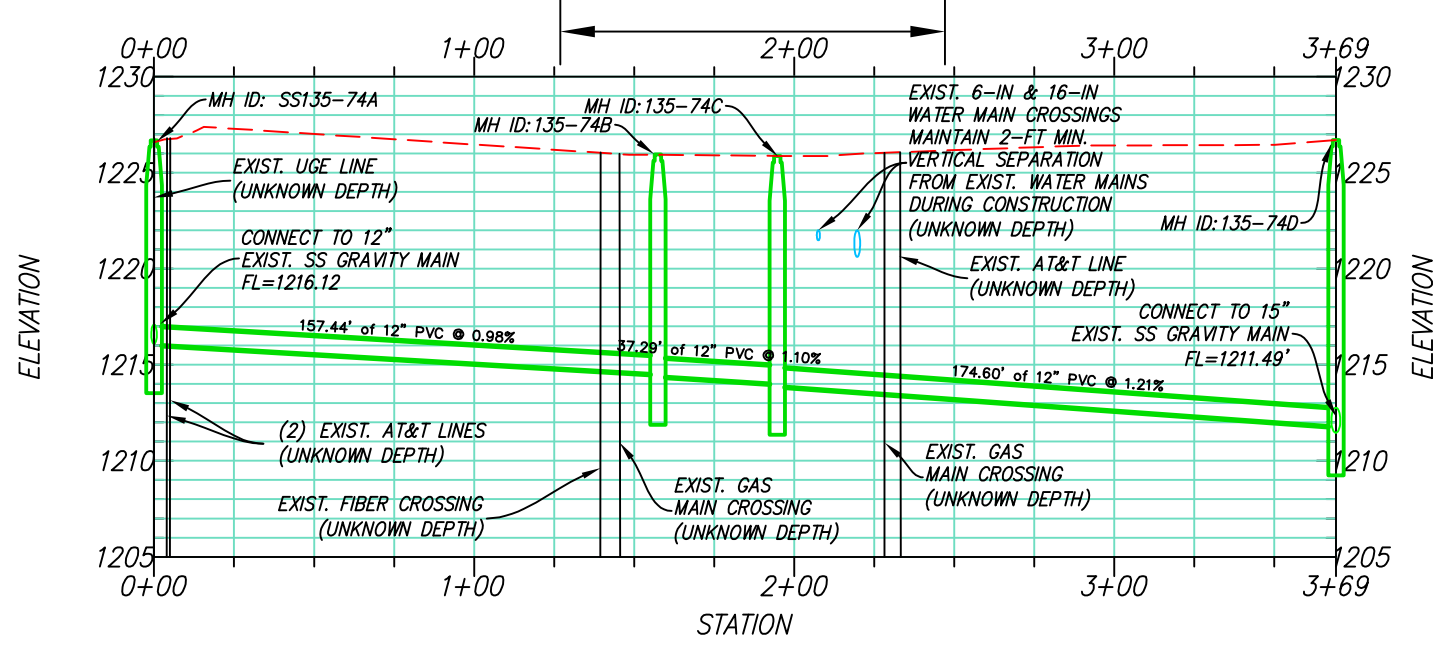
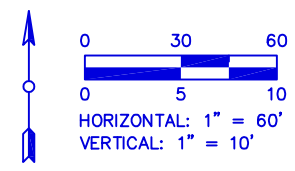


120-FT OF SPECIAL TRENCH COMPACTION



- NOTE:**
1. ROADWAY STRIPING IMPACTED BY CONSTRUCTION TO BE RE-STRIPED BY CONTRACTOR IN ACCORDANCE W/ CITY SPECIFICATIONS.
  2. ABANDONED VCP SHALL BE FILLED ENTIRELY WITH FLOW FILL WHILE UTILIZING PRESSURE GROUTING TECHNIQUES.
  3. FIELD VERIFY EXISTING SANITARY SEWER INVERT ELEVATION AT THE TIE-IN POINTS AND REVIEW ELEVATION AND LOCATION WITH ENGINEER PRIOR TO BEGINNING INSTALLATION OF NEW MANHOLES AND SANITARY SEWER.

MULBERRY ST (STATION 0+00 TO 3+69)



CITY OF SALINA, KANSAS PUBLIC WORKS - ENGINEERING - UTILITIES		
DOWNTOWN SS PROJECT MULBERRY ST - SS PLAN & PROFILE		
PROJ NO: 63162	DATE: May 2018	SHEET: DW-2
FILENAME: 2018_Downtown_SS_Improvements_Project - Addendum		