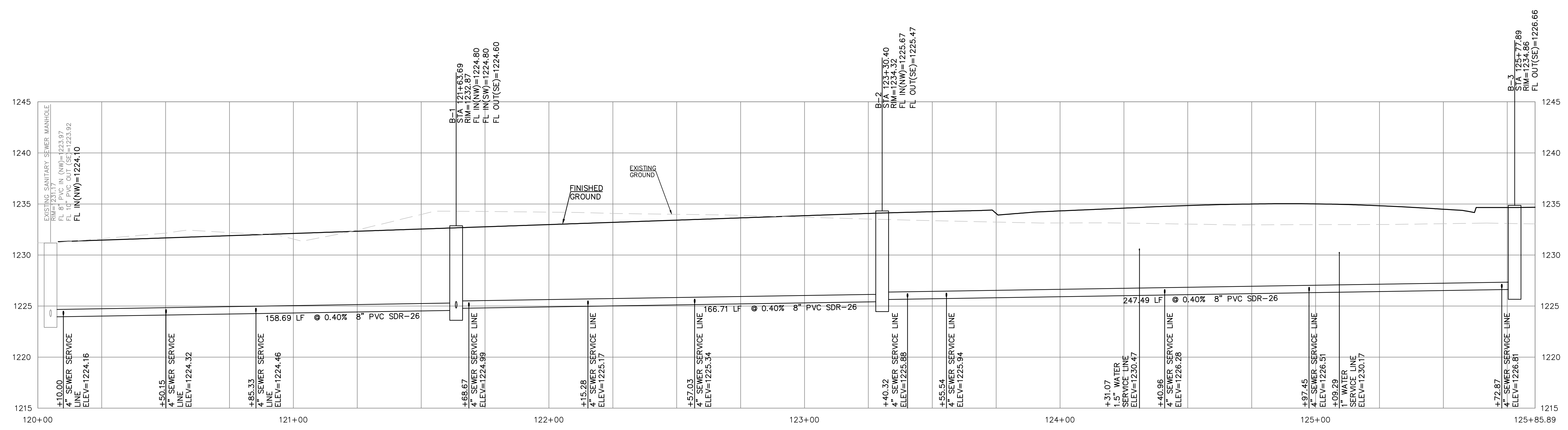


EXTENSIVE REVISIONS

- SEPARATION OF WATER MAINS AND SANITARY SEWERS:**
1. A MINIMUM HORIZONTAL DISTANCE OF 10 FEET SHALL BE MAINTAINED BETWEEN WATER AND SEWER LINES. AT POINT WHERE SEWERS CROSS WATER MAINS, THE SEWER SHALL BE CONSTRUCTED OF CAST IRON, PLASTIC PIPE WITH SOLVENT WELDED JOINS, OR PIPE ENCASED IN CONCRETE FOR A DISTANCE OF 10 FEET IN EACH DIRECTION OF THE CROSSING UNLESS THE WATER MAIN IS AT LEAST 2 FEET ABOVE THE SEWER.
  2. WHERE A WATER MAIN MUST CROSS A SEWER LINE, MAINTAIN 2 FEET VERTICAL SEPARATION WITH THE WATER MAIN ABOVE THE SEWER.
  3. BUILDERS TO MAINTAIN MINIMUM 10' SEPARATION FROM SEWER MANHOLES WHEN RUNNING WATER SERVICE LINES TO HOUSE.
  4. ALL SANITARY SEWER SERVICE LINE WILL BE AT A MIN 1% GRADE.
  5. ALL NORTHING AND EASTING WAS TAKEN FROM CENTER OF STRUCTURE. REFERENCE DETAIL FOR ACTUAL LID LOCATION.

SCALE:  
PLAN: 1"=20'  
PROFILE: 1"=20' HORIZ.  
1"=5' VERT.



REV	DATE	DESCRIPTION	SDM	BKR	SDM	BKR	CHK
2	7-8-16	REVISED PER CITY COMMENTS					
1	6-14-16	REVISED PER KDH COMMENTS					
0	6-9-16	INITIAL ISSUE					

SAMUEL D. MALINOWSKY  
ENGINEER  
KS # 12595

**KAW VALLEY ENGINEERING**  
2319 N. JACKSON I.P.O. BOX 1304  
JUNCTION CITY, KANSAS 66441  
PH. (785) 762-5040 | FAX (785) 762-7744  
jdm@kveeng.com | www.kveeng.com

KAW VALLEY ENGINEERING, INC. IS AUTHORIZED TO OFFER ENGINEERING SERVICES BY KANSAS STATE CERTIFICATE OF AUTHORIZATION # E-113. EXPIRES 12/31/18

<b>RIVER TRAIL 2ND ADDITION</b>	
<b>SALINA, KANSAS</b>	
<b>SANITARY SEWER LINE "B" - PLAN &amp; PROFILE</b>	
PROJ. NO.	A15 7276
DESIGNER	SDM
DRAWN BY	BKR
SHEET	7276SPP
REV	2

THIS DRAWING SHALL NOT BE UTILIZED BY ANY PERSON, FIRM, OR CORPORATION IN WHOLE OR IN PART WITHOUT THE SPECIFIC PERMISSION OF KAW VALLEY ENGINEERING, INC.