

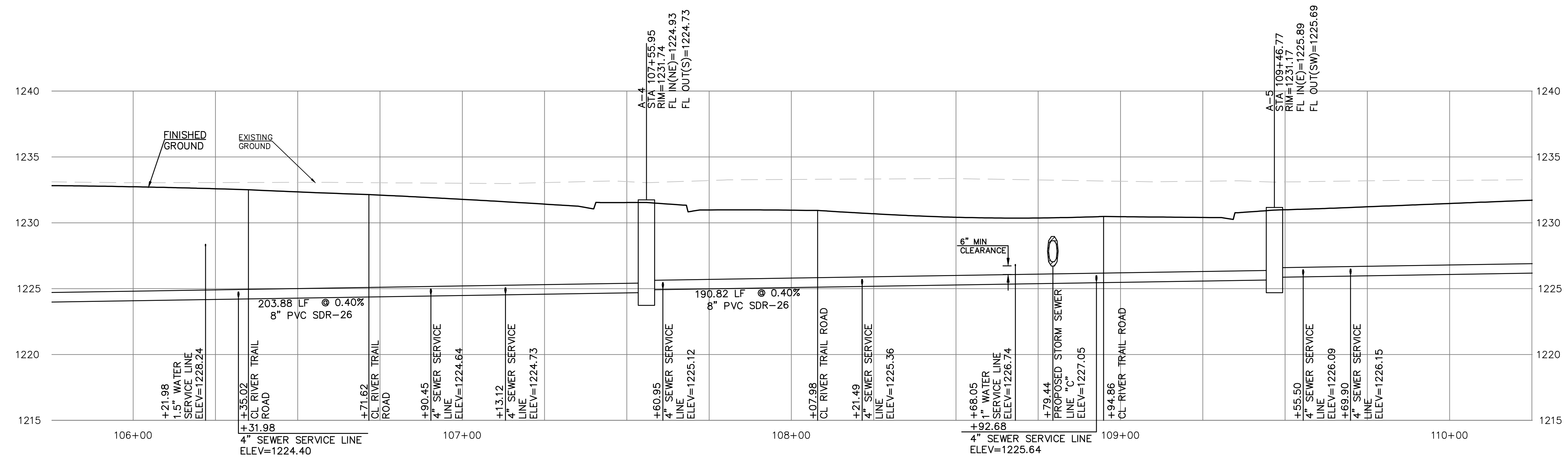
- SEPARATION OF WATER MAINS AND SANITARY SEWERS:**
1. A MINIMUM HORIZONTAL DISTANCE OF 10 FEET SHALL BE MAINTAINED BETWEEN WATER AND SEWER LINES. AT POINT WHERE SEWERS CROSS WATER MAINS, THE SEWER SHALL BE CONSTRUCTED OF CAST IRON, PLASTIC PIPE WITH SOLVENT WELDED JOINS, OR PIPE ENCASED IN CONCRETE FOR A DISTANCE OF 10 FEET IN EACH DIRECTION OF THE CROSSING UNLESS THE WATER MAIN IS AT LEAST 2 FEET ABOVE THE SEWER.
 2. WHERE A WATER MAIN MUST CROSS A SEWER LINE, MAINTAIN 2 FEET VERTICAL SEPARATION WITH THE WATER MAIN ABOVE THE SEWER.
 3. BUILDERS TO MAINTAIN MINIMUM 10' SEPARATION FROM SEWER MANHOLES WHEN RUNNING WATER SERVICE LINES TO HOUSE.
 4. ALL SANITARY SEWER SERVICE LINE WILL BE AT A MIN 1% GRADE.
 5. ALL NORTHING AND EASTING WAS TAKEN FROM CENTER OF STRUCTURE. REFERENCE DETAIL FOR ACTUAL LID LOCATION.

SDM	BKR	CHK
SDM	BKR	CHK
SDM	BKR	CHK
SDM	BKR	CHK
REV	DATE	DESCRIPTION
2	7-8-16	REVISED PER CITY COMMENTS
1	6-14-16	REVISED PER KDHE COMMENTS
0	6-9-16	INITIAL ISSUE

SAMUEL D. MALINOWSKY
ENGINEER
KS # 12595

KAW VALLEY ENGINEERING
2319 N. JACKSON, P.O. BOX 1304
JUNCTION CITY, KANSAS 66441
PH. (785) 762-5040 | FAX (785) 762-7744
jdc@kveeng.com | www.kveeng.com

KAW VALLEY ENGINEERING, INC. IS AUTHORIZED TO OFFER ENGINEERING SERVICES BY KANSAS STATE CERTIFICATE OF AUTHORIZATION # E-113. EXPIRES 12/31/16



RIVER TRAIL 2ND ADDITION
SALINA, KANSAS
SANITARY SEWER LINE "A" - PLAN & PROFILE

PROJ. NO.	A15 7276
DESIGNER	SDM
DRAWN BY	BKR
CFN	7276SPP
SHEET	C21
REV	2

EXTENSIVE REVISIONS