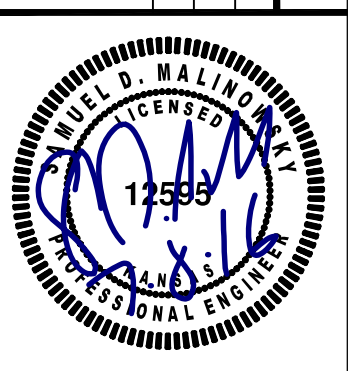


- SEPARATION OF WATER MAINS AND SANITARY SEWERS:**
1. A MINIMUM HORIZONTAL DISTANCE OF 10 FEET SHALL BE MAINTAINED BETWEEN WATER AND SEWER LINES. AT POINT WHERE SEWERS CROSS WATER MAINS, THE SEWER SHALL BE CONSTRUCTED OF CAST IRON, PLASTIC PIPE WITH SOLVENT WELDED JOINS, OR PIPE ENCASED IN CONCRETE FOR A DISTANCE OF 10 FEET IN EACH DIRECTION OF THE CROSSING UNLESS THE WATER MAIN IS AT LEAST 2 FEET ABOVE THE SEWER.
 2. WHERE A WATER MAIN MUST CROSS A SEWER LINE, MAINTAIN 2 FEET VERTICAL SEPARATION WITH THE WATER MAIN ABOVE THE SEWER.
 3. BUILDERS TO MAINTAIN MINIMUM 10' SEPARATION FROM SEWER MANHOLES WHEN RUNNING WATER SERVICE LINES TO HOUSE.
 4. ALL SANITARY SEWER SERVICE LINE WILL BE AT A MIN 1% GRADE.
 5. ALL NORTHING AND EASTING WAS TAKEN FROM CENTER OF STRUCTURE. REFERENCE DETAIL FOR ACTUAL LID LOCATION.

REV	DATE	DESCRIPTION
2	7-8-16	REVISED PER CITY COMMENTS
1	6-14-16	REVISED PER KDHHE COMMENTS
0	6-9-16	INITIAL ISSUE



SAMUEL D. MALINOWSKY
ENGINEER
KS # 12595

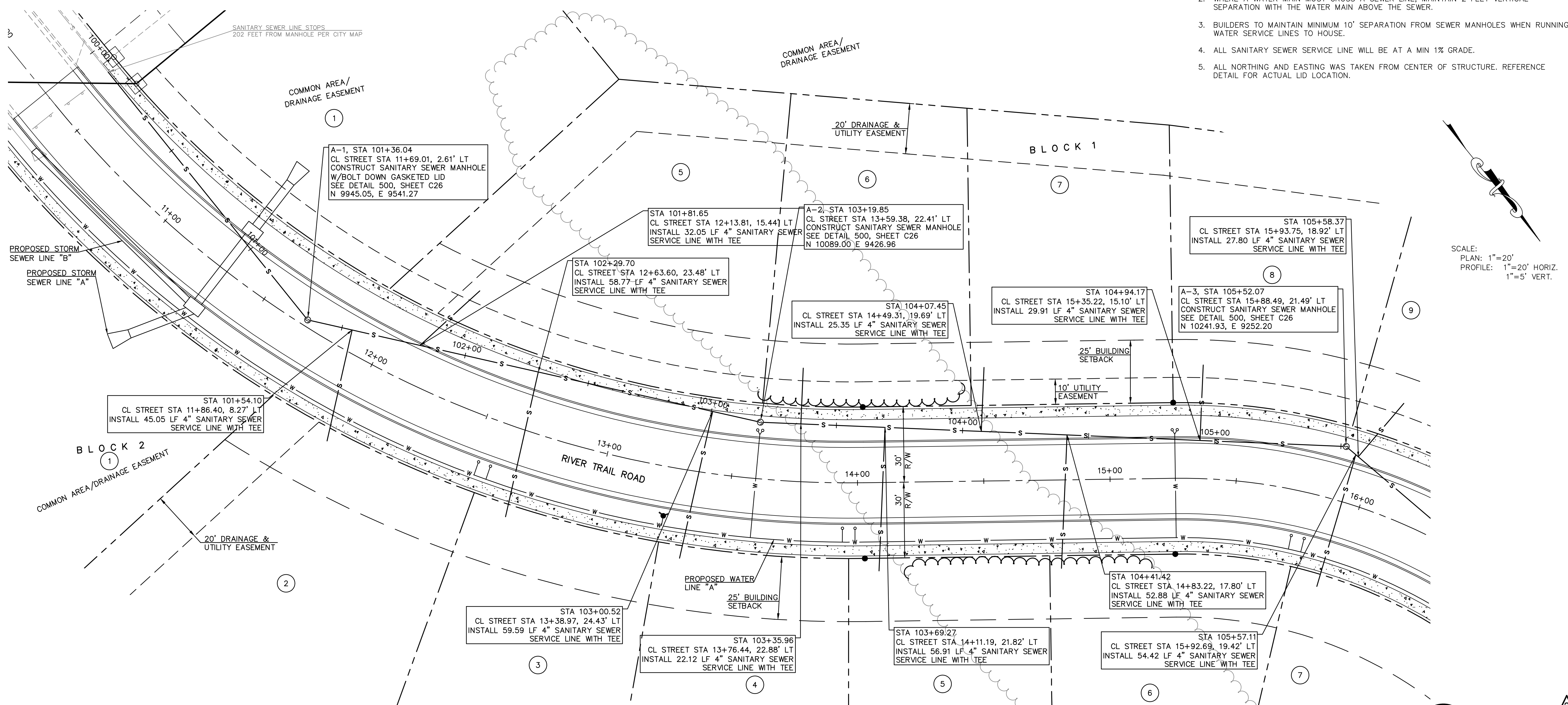
2319 N. JACKSON I.P.O. BOX 1304
JUNCTION CITY, KANSAS 66441
PH. (785) 762-5040 | FAX (785) 762-7744
jdm@kveeng.com | www.kveeng.com

KAW VALLEY ENGINEERING
KAW VALLEY ENGINEERING, INC. IS AUTHORIZED TO OFFER ENGINEERING SERVICES BY KANSAS STATE CERTIFICATE OF AUTHORIZATION # E-113. EXPIRES 12/31/16

RIVER TRAIL 2ND ADDITION
SALINA, KANSAS

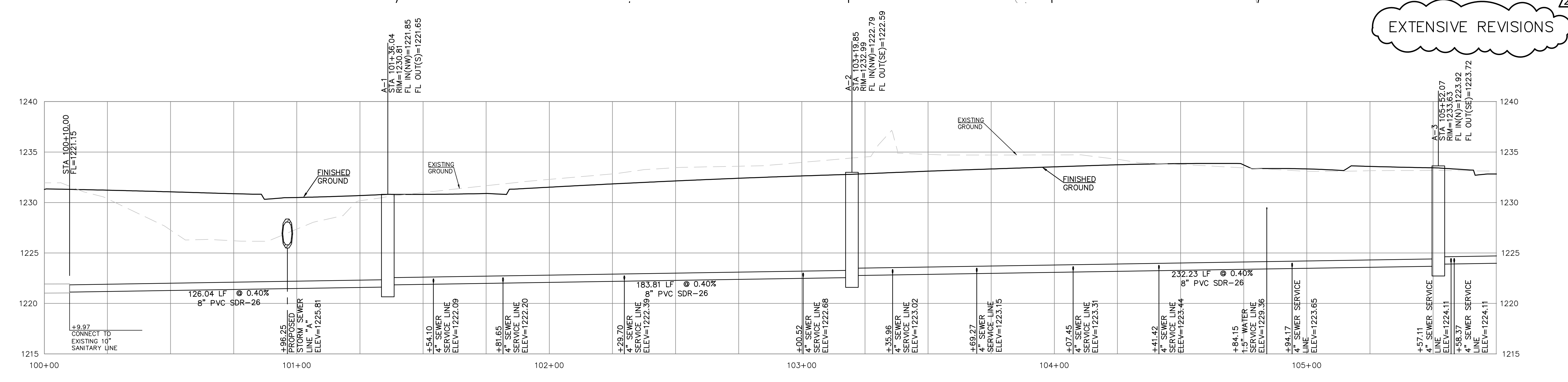
SANITARY SEWER LINE "A" - PLAN & PROFILE

PROJ. NO. A15 7276
DESIGNER: SDM DRAWN BY: BKR
CFN: 7276SP
SHEET: C20 REV: 2



SCALE:
PLAN: 1"=20'
PROFILE: 1"=20' HORIZ.
1"=5' VERT.

EXTENSIVE REVISIONS



THIS DRAWING SHALL NOT BE UTILIZED BY ANY PERSON, FIRM, OR CORPORATION IN WHOLE OR IN PART WITHOUT THE SPECIFIC PERMISSION OF KAW VALLEY ENGINEERING, INC.