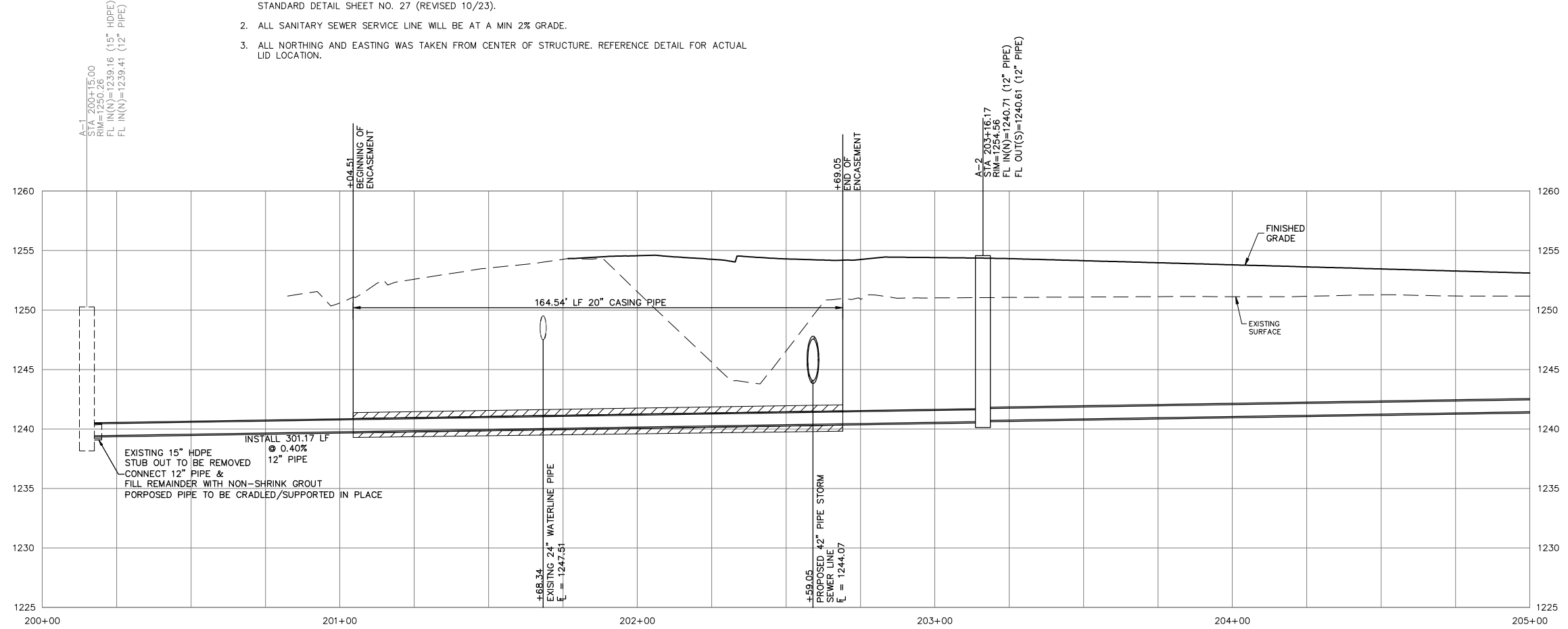


**SEPARATION OF WATER MAINS AND SANITARY SEWERS:**

- TWO FEET OF VERTICAL SEPARATION IS REQUIRED WHERE WATER LINES, INCLUDING SERVICE LINES, AND SANITARY SEWER CROSS. WHERE A WATERLINE (SERVICE LINE) CROSSES A NEW (EXISTING) FORCE MAIN (FORCE SERVICE LINE), THE WATERLINE (SERVICE LINE) MUST ALWAYS CROSS OVER THE FORCE MAIN (FORCE SERVICE LINE) WITH A MINIMUM VERTICAL SEPARATION DISTANCE OF 2 FT. SEWER LINE JOINTS ARE TO BE LOCATED AS FAR AS POSSIBLE FROM THE INTERSECTED WATER LINE. WHEN LAID PARALLEL, AT LEAST 10 FEET OF HORIZONTAL SEPARATION IS REQUIRED BETWEEN WATER LINES AND SANITARY SEWERS. SEPARATION BETWEEN WATER LINES AND SANITARY SEWER MANHOLES IS THE SAME AS THAT FOR SANITARY SEWERS. IN CASES WHERE THE REQUIRED SEPARATION CANNOT BE MAINTAINED ADDITIONAL PROVISIONS TO PROTECT THE WATER LINE SHOULD BE USED, AS DESCRIBED IN SECTION 501 OF THE SPECIFICATIONS. ALL SEPARATION DISTANCES ARE MEASURED FROM EDGE-TO-EDGE. REFER TO SALINA STANDARD DETAIL SHEET NO. 27 (REVISED 10/23).
- ALL SANITARY SEWER SERVICE LINE WILL BE AT A MIN 2% GRADE.
- ALL NORTHING AND EASTING WAS TAKEN FROM CENTER OF STRUCTURE. REFERENCE DETAIL FOR ACTUAL LID LOCATION.

**NOTE:**  
CONTRACTOR IS RESPONSIBLE FOR SUBMITTING TRAFFIC CONTROL PLANS FOR THE CITY'S APPROVAL FOR WORK IN RIGHT-OF-WAY TO CONNECT TO EXISTING WATER/SANITARY SEWER STRUCTURES.



SCALE:  
PLAN: 1"=20'  
PROFILE: 1"=20' HORIZ.  
1"=5' VERT.

NOTE:  
STREET STATION AND OFFSET ARE REFERENCED TO CENTER OF STRUCTURE.

DESIGNER	JDT	DATE	07/30/25																		
DRAWN BY	TDA/ZEK	REV	4																		
CFN	3335SPP	PROJECT NO.	E22D3335																		
SHEET	27	REVISIONS	<table border="1"> <tr><th>REV</th><th>DATE</th><th>DESCRIPTION</th></tr> <tr><td>0</td><td>07/28/25</td><td>INITIAL ISSUE</td></tr> <tr><td>1</td><td>04/09/25</td><td>REVISIONS PER CITY COMMENTS</td></tr> <tr><td>2</td><td>05/27/25</td><td>REVISIONS PER CITY COMMENTS</td></tr> <tr><td>3</td><td>07/21/25</td><td>REVISIONS PER WATER &amp; SANITARY SEWER</td></tr> <tr><td>4</td><td>07/30/25</td><td>REVISIONS PER WATER &amp; SANITARY SEWER</td></tr> </table>	REV	DATE	DESCRIPTION	0	07/28/25	INITIAL ISSUE	1	04/09/25	REVISIONS PER CITY COMMENTS	2	05/27/25	REVISIONS PER CITY COMMENTS	3	07/21/25	REVISIONS PER WATER & SANITARY SEWER	4	07/30/25	REVISIONS PER WATER & SANITARY SEWER
REV	DATE	DESCRIPTION																			
0	07/28/25	INITIAL ISSUE																			
1	04/09/25	REVISIONS PER CITY COMMENTS																			
2	05/27/25	REVISIONS PER CITY COMMENTS																			
3	07/21/25	REVISIONS PER WATER & SANITARY SEWER																			
4	07/30/25	REVISIONS PER WATER & SANITARY SEWER																			
PROJECT TITLE			PROJECT NO.																		
WINDY CREEK ADDITION - PHASE 1			E22D3335																		
I-135 & WATERWELL ROAD																					
SALINE COUNTY, KANSAS																					
SITE DEVELOPMENT PLANS																					
SANITARY SEWER LINE 'A' - PLAN & PROFILE																					
PROFESSIONAL ENGINEER			ENGINEER																		
JONATHAN DUANE THOMPSON			KS # 30257																		
KAW VALLEY ENGINEERING			1627 SUNFLOWER LANE SALINA, KANSAS 67401 PH. (785) 823-3400 sd@kveeng.com   www.kveeng.com																		
KAW VALLEY ENGINEERING, INC. IS AUTHORIZED TO OFFER ENGINEERING SERVICES STATE CERTIFICATE OF AUTHORIZATION # E-113.			EXPIRES 12/31/26																		