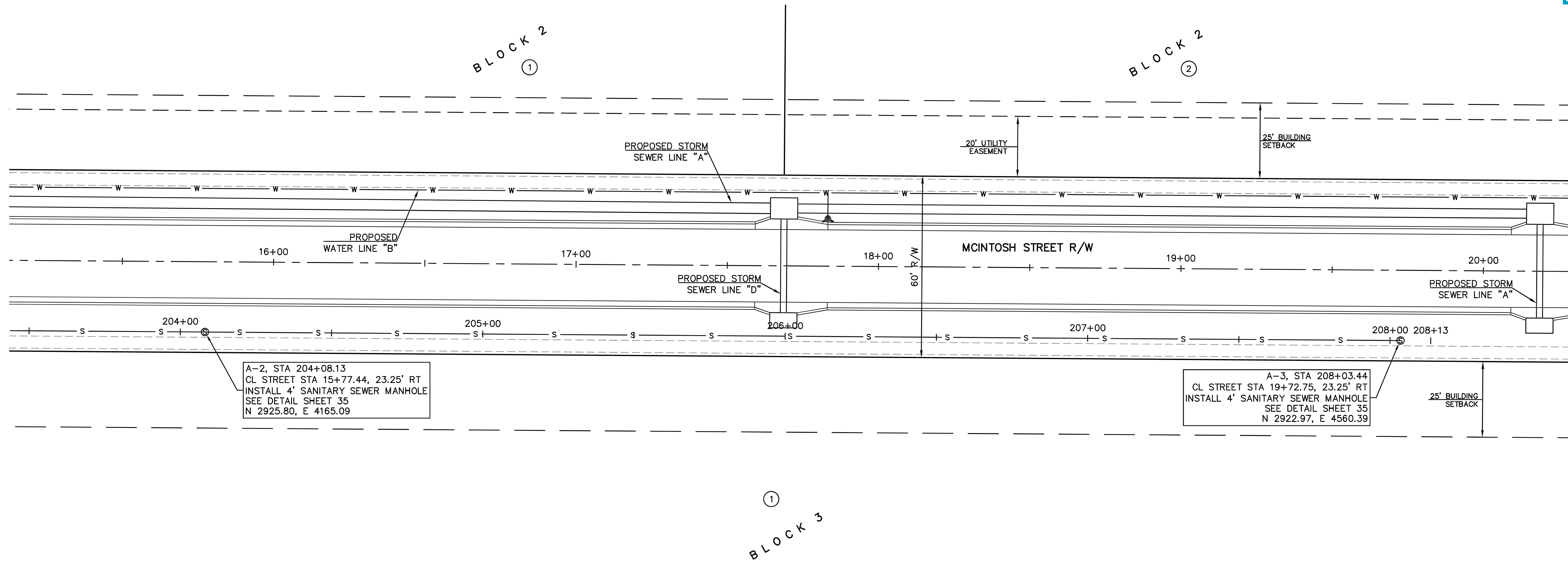
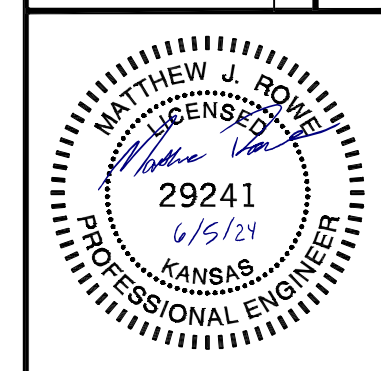


0	06/04/24	INITIAL ISSUE	
		REV	DATE
		DESCRIPTION	
		DSN	DWN
		MJR	TDA
		CHK	CHK



A-2, STA 204+08.13  
 CL STREET STA 15+77.44, 23.25' RT  
 INSTALL 4' SANITARY SEWER MANHOLE  
 SEE DETAIL SHEET 35  
 N 2926.80, E 4165.09

A-3, STA 208+03.44  
 CL STREET STA 19+72.75, 23.25' RT  
 INSTALL 4' SANITARY SEWER MANHOLE  
 SEE DETAIL SHEET 35  
 N 2922.97, E 4560.39



MATTHEW J. ROWE  
 ENGINEER  
 KS # 29241

1627 SUNFLOWER LANE  
 SALINA, KANSAS 67401  
 781-833-4000  
 info@kve.com | www.kve.com

**KAW VALLEY ENGINEERING**

KAW VALLEY ENGINEERING, INC. IS AUTHORIZED TO OFFER ENGINEERING SERVICES BY KANSAS STATE CERTIFICATE OF AUTHORIZATION # E-113. EXPIRES 12/31/24.

SCALE:  
 PLAN: 1"=20'  
 PROFILE: 1"=20' HORIZ.  
 1"=5' VERT.

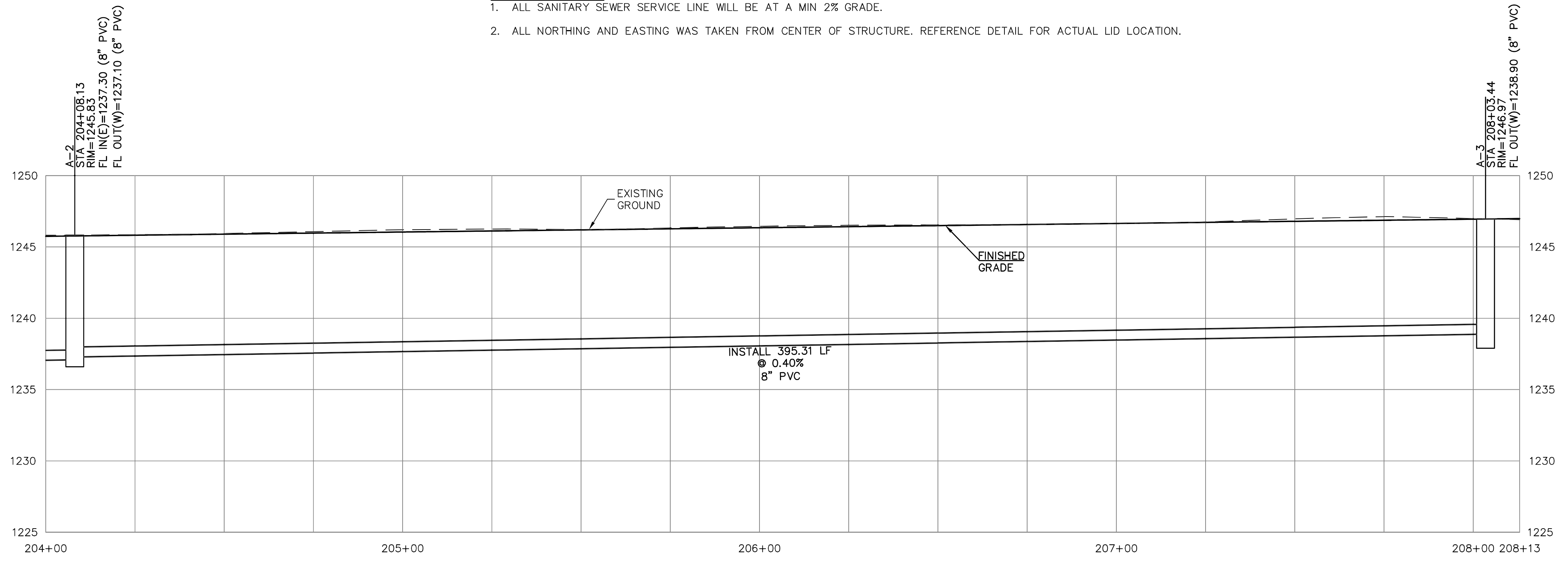
NOTE:  
 STREET STATION AND OFFSET  
 ARE REFERENCED TO CENTER OF  
 STRUCTURE.

**SEPARATION OF WATER MAINS AND SANITARY SEWERS:**

1. A MINIMUM HORIZONTAL DISTANCE OF 10 FEET SHALL BE MAINTAINED BETWEEN WATER (MAINS AND SERVICE) AND SANITARY SEWER (MAINS AND SERVICE) LINES.
2. WHERE A WATER MAIN MUST CROSS A SEWER LINE, MAINTAIN 2 FEET VERTICAL SEPARATION WITH THE WATER MAIN ABOVE THE SEWER.
3. BUILDERS TO MAINTAIN MINIMUM 10' SEPARATION FROM THE OUTSIDE EDGE OF SANITARY SEWER MANHOLES TO THE OUTSIDE EDGE OF WATER SERVICE LINES WHEN RUNNING SERVICE LINES TO HOUSE.

**GENERAL NOTES:**

1. ALL SANITARY SEWER SERVICE LINE WILL BE AT A MIN 2% GRADE.
2. ALL NORTHING AND EASTING WAS TAKEN FROM CENTER OF STRUCTURE. REFERENCE DETAIL FOR ACTUAL LID LOCATION.



**LIBERTY ADDITION NO. 3**  
 3167 OHIO STREET  
 SALINA, KANSAS 67401

SANITARY SEWER LINE "A" - PLAN & PROFILE

PROJ. NO.	E23_3406
DESIGNER	MJR
DRAWN BY	TDA
CFN	3406SPP
SHEET	33
REV	0