

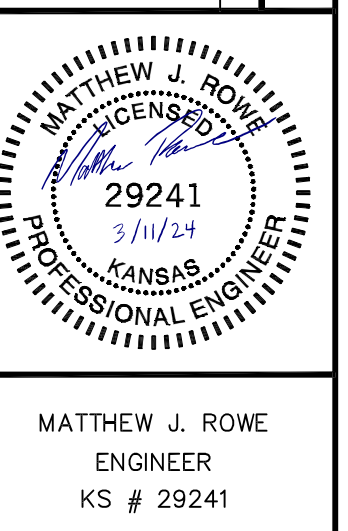
SEPARATION OF WATER MAINS AND SANITARY SEWERS:

- A MINIMUM HORIZONTAL DISTANCE OF 10 FEET SHALL BE MAINTAINED BETWEEN WATER (MANS AND SERVICE) AND SANITARY SEWER (MANS AND SERVICE) LINES.
- WHERE A WATER MAIN MUST CROSS A SEWER LINE, MAINTAIN 2 FEET VERTICAL SEPARATION WITH THE WATER MAIN ABOVE THE SEWER.
- BUILDERS TO MAINTAIN MINIMUM 10' SEPARATION FROM THE OUTSIDE EDGE OF SANITARY SEWER MANHOLES TO THE OUTSIDE EDGE OF WATER SERVICE LINES WHEN RUNNING SERVICE LINES TO HOUSE.

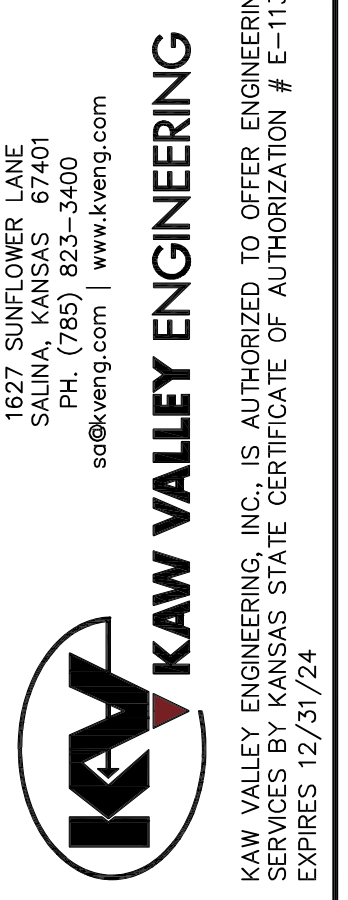
GENERAL NOTES:

- ALL SANITARY SEWER SERVICE LINE WILL BE AT A MIN 2% GRADE.
- ALL NORTHING AND EASTING WAS TAKEN FROM CENTER OF STRUCTURE. REFERENCE DETAIL FOR ACTUAL LID LOCATION.

0	03/11/24	INITIAL ISSUE	MJR	TDA	MJR
		REV	DATE	DESCRIPTION	
				DSN	CHK



MATTHEW J. ROWE
ENGINEER
KS # 29241



STONE LAKE ADDITION 3B
SCHILLING ROAD AND OHIO STREET
SALINA, KANSAS

SANITARY SEWER LINE 'C' - PLAN AND PROFILE

PROJ. NO. E21D3083
DESIGNER: MJR DRAWN BY: ZEK
CFN: 3083SPP
SHEET: 21 REV: 0

THIS DRAWING SHALL NOT BE UTILIZED BY ANY PERSON, FIRM, OR CORPORATION IN WHOLE OR IN PART WITHOUT THE SPECIFIC PERMISSION OF KAW VALLEY ENGINEERING, INC.