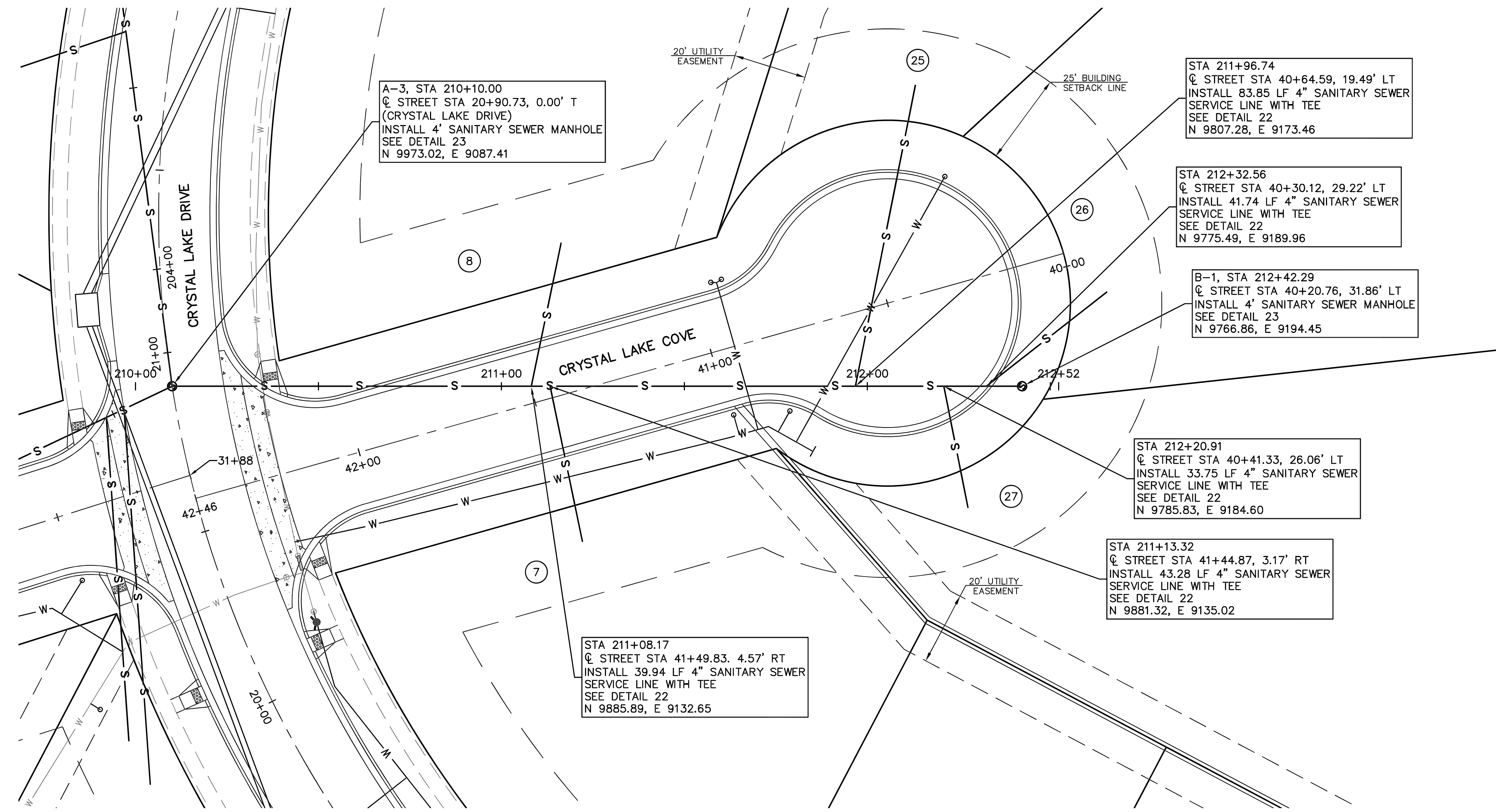


SCALE:  
 PLAN: 1"=20'  
 PROFILE: 1"=20' HORIZ.  
 1"=5' VERT.

NOTE:  
 STREET STATION AND OFFSET  
 ARE REFERENCED TO CENTER  
 OF STRUCTURE.

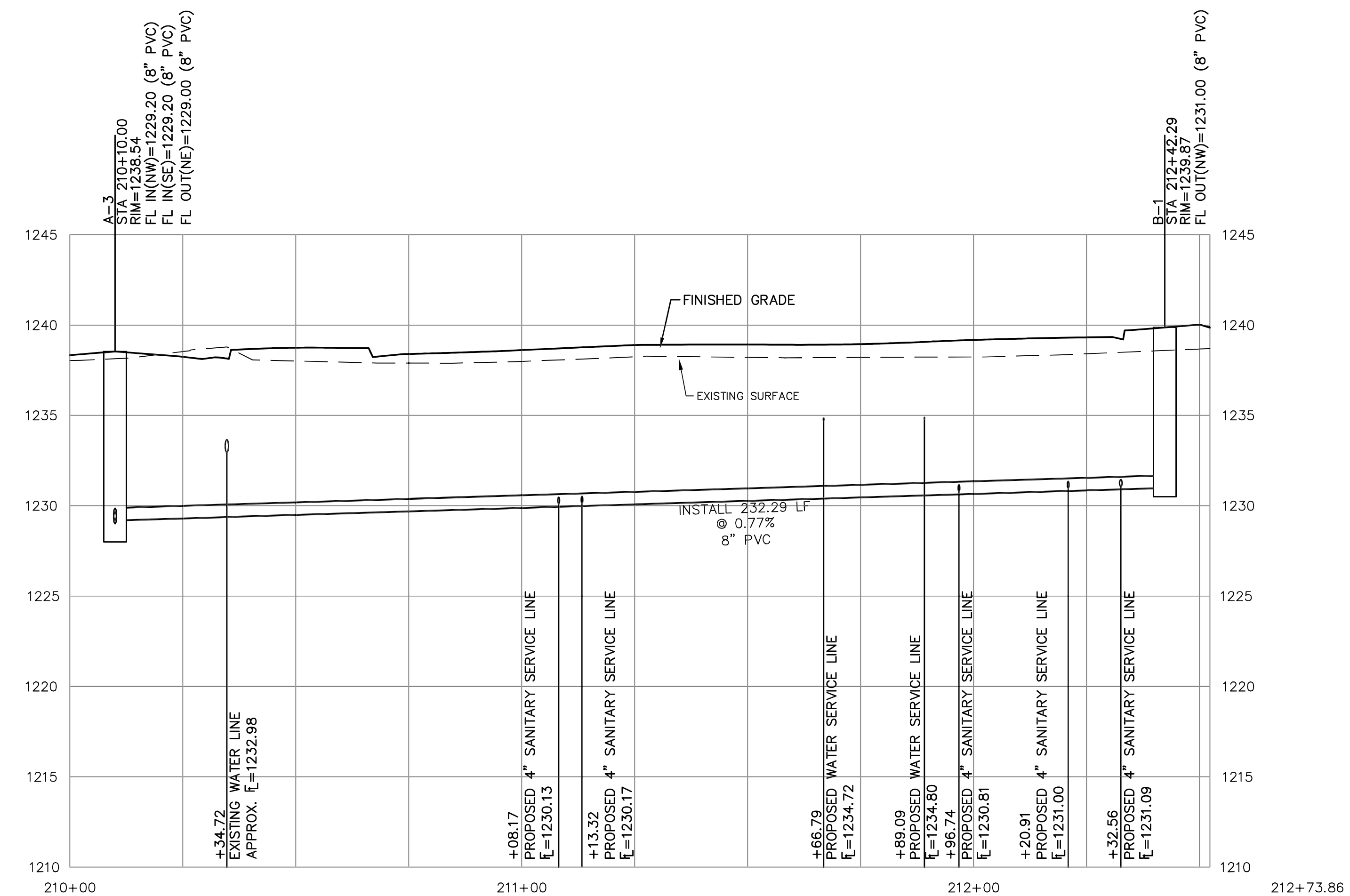


**SEPARATION OF WATER MAINS AND SANITARY SEWERS:**

1. A MINIMUM HORIZONTAL DISTANCE OF 10 FEET SHALL BE MAINTAINED BETWEEN WATER (MAINS AND SERVICE) AND SANITARY SEWER (MAINS AND SERVICE) LINES.
2. WHERE A WATER MAIN MUST CROSS A SEWER LINE, MAINTAIN 2 FEET VERTICAL SEPARATION WITH THE WATER MAIN ABOVE THE SEWER.
3. BUILDERS TO MAINTAIN MINIMUM 10' SEPARATION FROM THE OUTSIDE EDGE OF SANITARY SEWER MANHOLES TO THE OUTSIDE EDGE OF WATER SERVICE LINES WHEN RUNNING SERVICE LINES TO HOUSE.

**GENERAL NOTES:**

1. ALL SANITARY SEWER SERVICE LINE WILL BE AT A MIN 2% GRADE.
2. ALL NORTHING AND EASTING WAS TAKEN FROM CENTER OF STRUCTURE. REFERENCE DETAIL FOR ACTUAL LID LOCATION.



PROJ. NO.	E21D3083
DESIGNER	MJR
DRAWN BY	ZEK
CFN	3083SPP
SHEET	20
REV	0

REV	DATE	DESCRIPTION
0	03/11/24	INITIAL ISSUE
		DSN
		DWN
		CHK

STONE LAKE ADDITION 3B  
 SCHILLING ROAD AND OHIO STREET  
 SALINA, KANSAS

SANITARY SEWER LINE 'B' - PLAN AND PROFILE

PROF. J. ROWE  
 LICENSED PROFESSIONAL ENGINEER  
 29241  
 3/11/24  
 KANSAS

MATTHEW J. ROWE  
 ENGINEER  
 KS # 29241

1627 SUNFLOWER LANE  
 SALINA, KANSAS 67401  
 913-831-1600  
 info@kve.com | www.kve.com

**KAW VALLEY ENGINEERING**  
 KAW VALLEY ENGINEERING, INC. IS AUTHORIZED TO OFFER ENGINEERING SERVICES BY KANSAS STATE CERTIFICATE OF AUTHORIZATION # E-113. EXPIRES 12/31/24