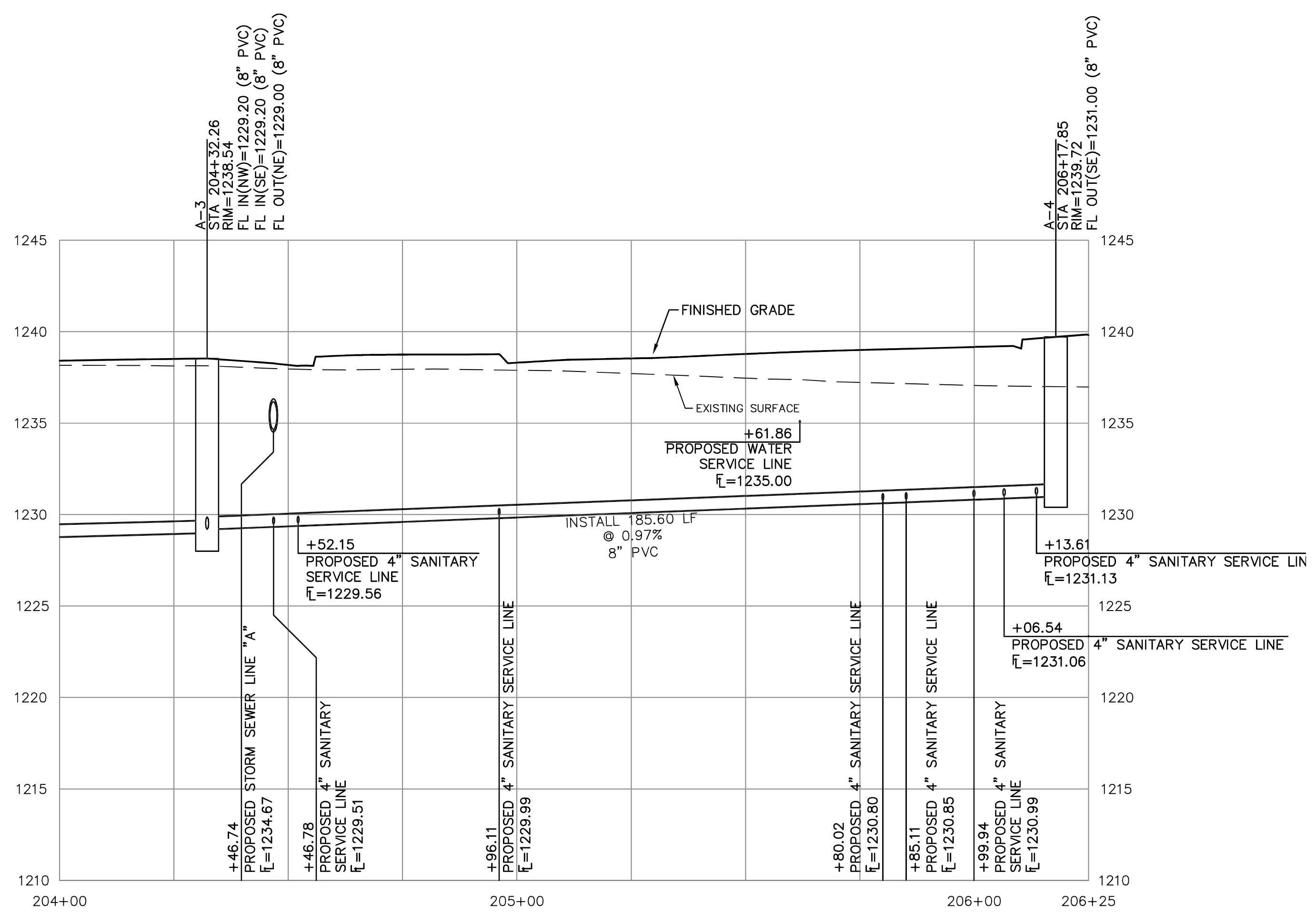


SCALE:
 PLAN: 1"=20'
 PROFILE: 1"=20' HORIZ.
 1"=5' VERT.

NOTE:
 STREET STATION AND OFFSET
 ARE REFERENCED TO CENTER
 OF STRUCTURE.



- SEPARATION OF WATER MAINS AND SANITARY SEWERS:**
- A MINIMUM HORIZONTAL DISTANCE OF 10 FEET SHALL BE MAINTAINED BETWEEN WATER (MAINS AND SERVICE) AND SANITARY SEWER (MAINS AND SERVICE) LINES.
 - WHERE A WATER MAIN MUST CROSS A SEWER LINE, MAINTAIN 2 FEET VERTICAL SEPARATION WITH THE WATER MAIN ABOVE THE SEWER.
 - BUILDERS TO MAINTAIN MINIMUM 10' SEPARATION FROM THE OUTSIDE EDGE OF SANITARY SEWER MANHOLES TO THE OUTSIDE EDGE OF WATER SERVICE LINES WHEN RUNNING SERVICE LINES TO HOUSE.
- GENERAL NOTES:**
- ALL SANITARY SEWER SERVICE LINE WILL BE AT A MIN 2% GRADE.
 - ALL NORTHING AND EASTING WAS TAKEN FROM CENTER OF STRUCTURE. REFERENCE DETAIL FOR ACTUAL LID LOCATION.

DESIGNER	MJR	DRAWN BY	ZEK
CFN	3083SPP	SHEET	19
PROJECT NO.	E21D3083	REV	0
PROJECT NAME	STONE LAKE ADDITION 3B SCHILLING ROAD AND OHIO STREET SALINA, KANSAS		
PROJECT DESCRIPTION	SANITARY SEWER LINE 'A' - PLAN AND PROFILE		
DATE	03/11/24	INITIAL ISSUE	
REV	0	DATE	03/11/24
DESCRIPTION	INITIAL ISSUE		
CHK	MJR	DWN	CHK
		TDA	
		MUR	

MATTHEW J. ROWE
 ENGINEER
 KS # 29241

KAW VALLEY ENGINEERING
 KAW VALLEY ENGINEERING, INC. IS AUTHORIZED TO OFFER ENGINEERING SERVICES BY KANSAS STATE CERTIFICATE OF AUTHORIZATION # E-113. EXPIRES 12/31/24.