

SCALE:  
 PLAN: 1"=20'  
 PROFILE: 1"=20' HORIZ.  
 1"=5' VERT.

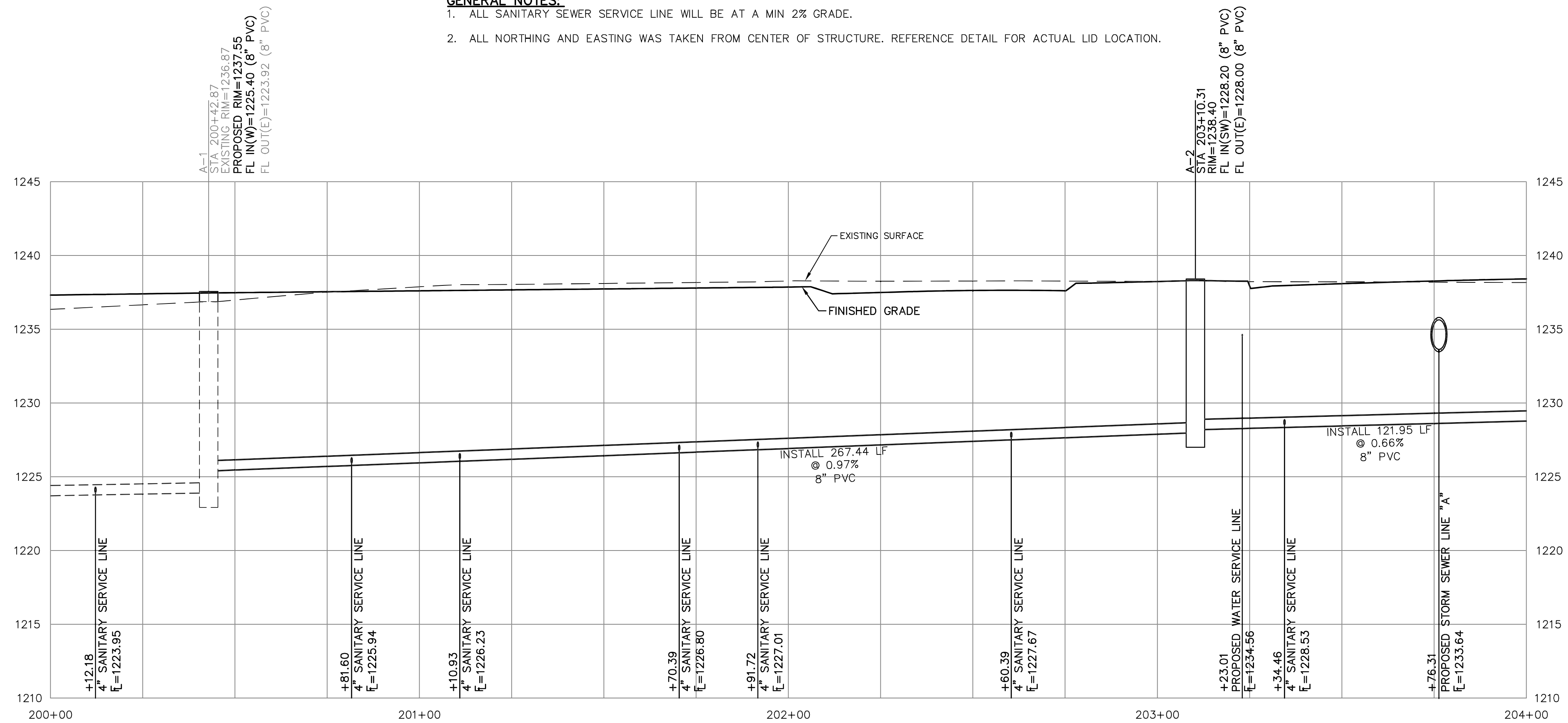
NOTE:  
 STREET STATION AND OFFSET  
 ARE REFERENCED TO CENTER  
 OF STRUCTURE.

**SEPARATION OF WATER MAINS AND SANITARY SEWERS:**

1. A MINIMUM HORIZONTAL DISTANCE OF 10 FEET SHALL BE MAINTAINED BETWEEN WATER (MAINS AND SERVICE) AND SANITARY SEWER (MAINS AND SERVICE) LINES.
2. WHERE A WATER MAIN MUST CROSS A SEWER LINE, MAINTAIN 2 FEET VERTICAL SEPARATION WITH THE WATER MAIN ABOVE THE SEWER.
3. BUILDERS TO MAINTAIN MINIMUM 10' SEPARATION FROM THE OUTSIDE EDGE OF SANITARY SEWER MANHOLES TO THE OUTSIDE EDGE OF WATER SERVICE LINES WHEN RUNNING SERVICE LINES TO HOUSE.

**GENERAL NOTES:**

1. ALL SANITARY SEWER SERVICE LINE WILL BE AT A MIN 2% GRADE.
2. ALL NORTHING AND EASTING WAS TAKEN FROM CENTER OF STRUCTURE. REFERENCE DETAIL FOR ACTUAL LID LOCATION.



PROJ. NO.	E21D3083	
DESIGNER	MJR	
DRAWN BY	ZBK	
CFN	3083SPP	
SHEET	18	
REV	0	
REV	DATE	DESCRIPTION
0	03/11/24	INITIAL ISSUE
		DSN
		DWN
		CHK
		MJR
		TDA

**KAW VALLEY ENGINEERING**  
 KAW VALLEY ENGINEERING, INC. IS AUTHORIZED TO OFFER ENGINEERING SERVICES BY KANSAS STATE CERTIFICATE OF AUTHORIZATION # E-113. EXPIRES 12/31/24.

1627 SUNFLOWER LANE  
 SALINA, KANSAS 67401  
 (785) 831-9600  
 info@kve.com | www.kve.com

**STONE LAKE ADDITION 3B**  
 SCHILLING ROAD AND OHIO STREET  
 SALINA, KANSAS

**SANITARY SEWER LINE 'A' - PLAN AND PROFILE**