

SEPARATION OF WATER MAINS AND SANITARY SEWERS:

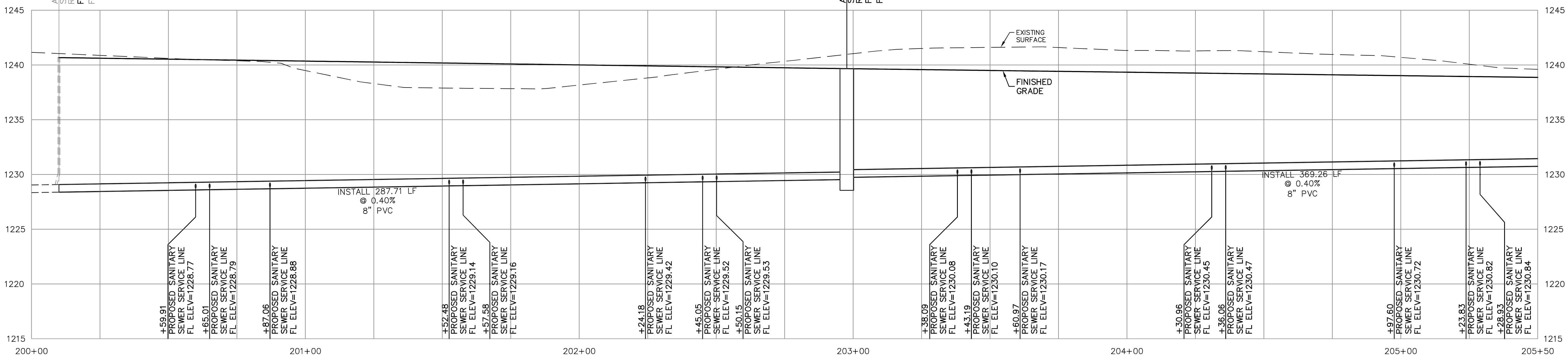
1. A MINIMUM HORIZONTAL DISTANCE OF 10 FEET SHALL BE MAINTAINED BETWEEN WATER (MAINS AND SERVICE) AND SANITARY SEWER (MAINS AND SERVICE) LINES.
2. WHERE A WATER MAIN MUST CROSS A SEWER LINE, MAINTAIN 2 FEET VERTICAL SEPARATION WITH THE WATER MAIN ABOVE THE SEWER.
3. BUILDERS TO MAINTAIN MINIMUM 10' SEPARATION FROM THE OUTSIDE EDGE OF SANITARY SEWER MANHOLES TO THE OUTSIDE EDGE OF WATER SERVICE LINES WHEN RUNNING SERVICE LINES TO HOUSE.

GENERAL NOTES:

1. ALL SANITARY SEWER SERVICE LINE WILL BE AT A MIN 2% GRADE.
2. ALL NORTHING AND EASTING WAS TAKEN FROM CENTER OF STRUCTURE. REFERENCE DETAIL FOR ACTUAL LID LOCATION.

A-1
STA 200+10.00
CL STREET STA 10+00.00, 20.75' RT
FL IN(E)=1228.40 (8" PVC)
FL OUT(W)=1228.40 (8" PVC)

A-2
STA 202+97.71
CL STREET STA 12+87.71, 20.75' RT
FL IN(E)=1229.75 (8" PVC)
FL OUT(W)=1229.55 (8" PVC)



SCALE:
PLAN: 1"=20'
PROFILE: 1"=20' HORIZ.
1"=5' VERT.

REV	DATE	DESCRIPTION
0	02/16/24	INITIAL ISSUE
MJR	TDA	DSN
MJR		CHK

MATTHEW J. ROWE
 ENGINEER
 KS # 29241

1627 SUNFLOWER LANE
 SALINA, KANSAS 67401
 PH. (785) 823-3411
 www.kawvalley.com

KAW VALLEY ENGINEERING
 KAW VALLEY ENGINEERING, INC. IS AUTHORIZED TO OFFER ENGINEERING SERVICES BY KANSAS STATE CERTIFICATE OF AUTHORIZATION # E-113. EXPIRES 12/31/24.

STONE LAKE ADDITION NO. 2
SCHILLING ROAD AND OHIO STREET
SALINA, KANSAS
PHASE 4A
SANITARY SEWER LINE 'A' PLAN AND PROFILE

PROJ. NO.	E21D2688
DESIGNER	MJR
DRAWN BY	ZEK
CFN	2688SPP
SHEET	20
REV	0