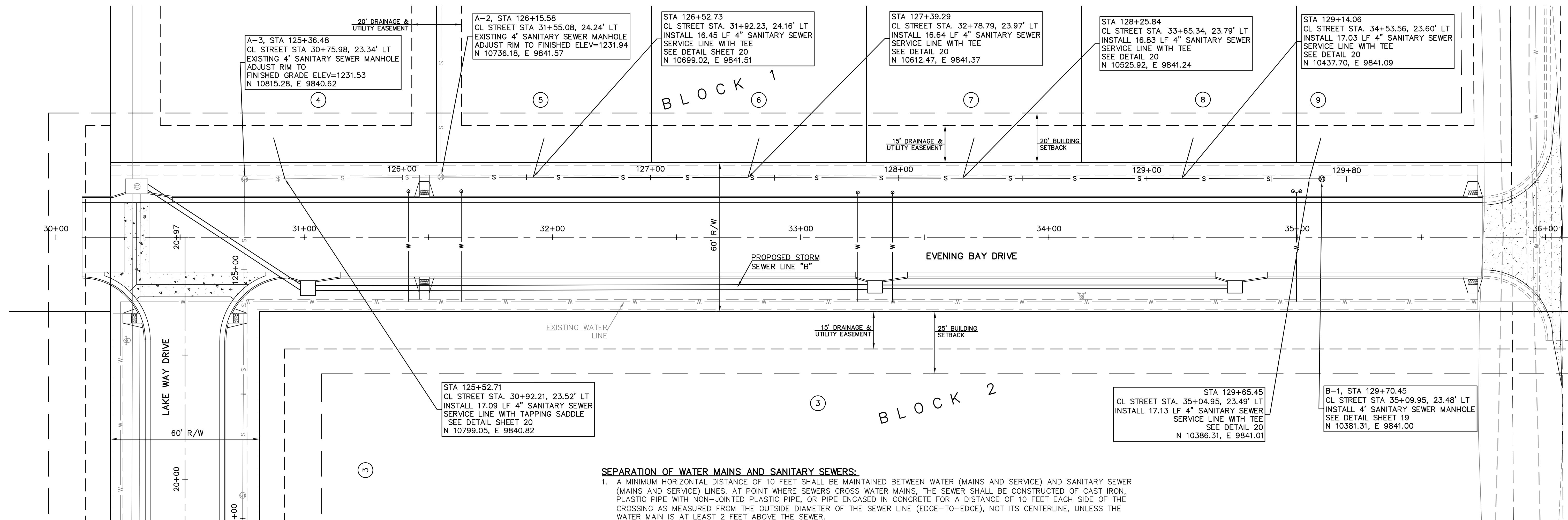
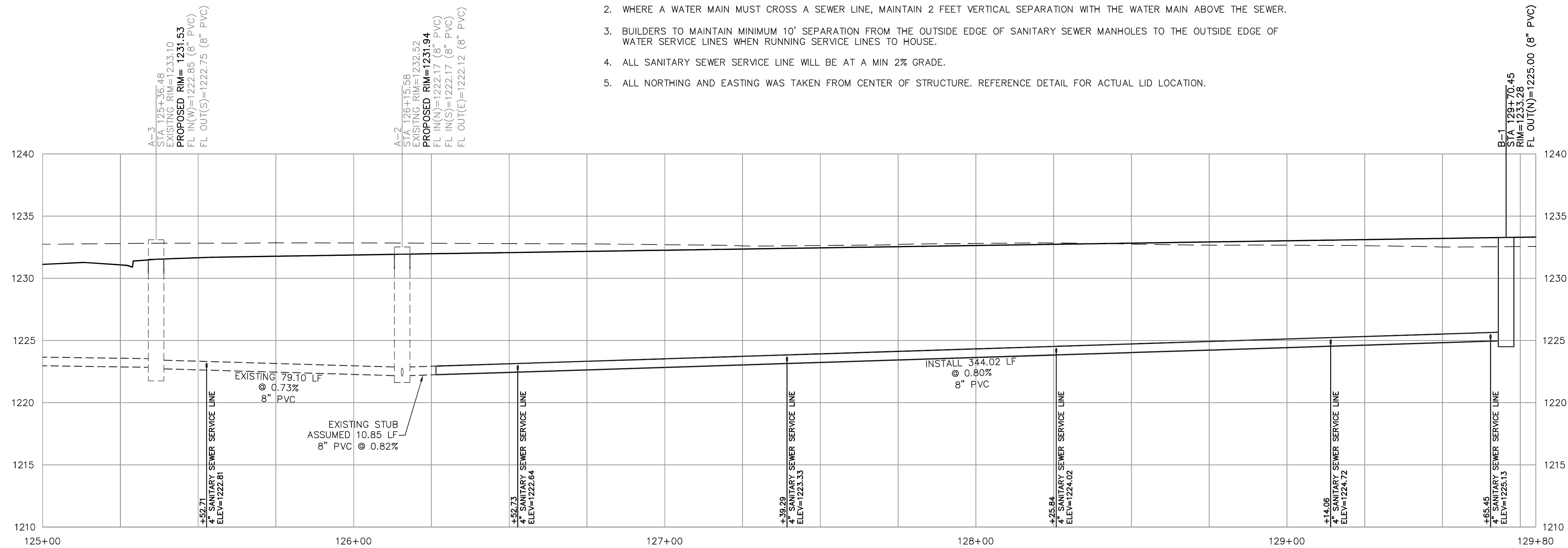


SCALE:
 PLAN: 1"=20'
 PROFILE: 1"=20' HORIZ.
 1"=5' VERT.



SEPARATION OF WATER MAINS AND SANITARY SEWERS:

1. A MINIMUM HORIZONTAL DISTANCE OF 10 FEET SHALL BE MAINTAINED BETWEEN WATER (MANS AND SERVICE) AND SANITARY SEWER (MANS AND SERVICE) LINES. AT POINT WHERE SEWERS CROSS WATER MAINS, THE SEWER SHALL BE CONSTRUCTED OF CAST IRON, PLASTIC PIPE WITH NON-JOINTED PLASTIC PIPE, OR PIPE ENCASED IN CONCRETE FOR A DISTANCE OF 10 FEET EACH SIDE OF THE CROSSING AS MEASURED FROM THE OUTSIDE DIAMETER OF THE SEWER LINE (EDGE-TO-EDGE), NOT ITS CENTERLINE, UNLESS THE WATER MAIN IS AT LEAST 2 FEET ABOVE THE SEWER.
2. WHERE A WATER MAIN MUST CROSS A SEWER LINE, MAINTAIN 2 FEET VERTICAL SEPARATION WITH THE WATER MAIN ABOVE THE SEWER.
3. BUILDERS TO MAINTAIN MINIMUM 10' SEPARATION FROM THE OUTSIDE EDGE OF SANITARY SEWER MANHOLES TO THE OUTSIDE EDGE OF WATER SERVICE LINES WHEN RUNNING SERVICE LINES TO HOUSE.
4. ALL SANITARY SEWER SERVICE LINE WILL BE AT A MIN 2% GRADE.
5. ALL NORTHING AND EASTING WAS TAKEN FROM CENTER OF STRUCTURE. REFERENCE DETAIL FOR ACTUAL LID LOCATION.



PROJ. NO.	E2303465
DESIGNER	MJR
DRAWN BY	TDA
CFN	3465SPP
SHEET	18
REV	0

LAKEVIEW ESTATES ADDITION NO. 2
 SOUTH OHIO STREET
 SALINA, KANSAS 67401

PHASE 2
 SANITARY SEWER LINE "B" - PLAN & PROFILE

1627 SUNFLOWER LANE
 SALINA, KANSAS 67401
 785-831-1100
 info@kvw.com | www.kvw.com

KAW VALLEY ENGINEERING
 KAW VALLEY ENGINEERING, INC. IS AUTHORIZED TO OFFER ENGINEERING SERVICES BY KANSAS STATE CERTIFICATE OF AUTHORIZATION # E-113. EXPIRES 12/31/24

MATTHEW J. ROWE
 ENGINEER
 KS # 29241

MATTHEW J. ROWE
 LICENSED PROFESSIONAL ENGINEER
 29241
 3/14/18
 KANSAS

REV	DATE	DESCRIPTION
0	03/14/24	INITIAL ISSUE