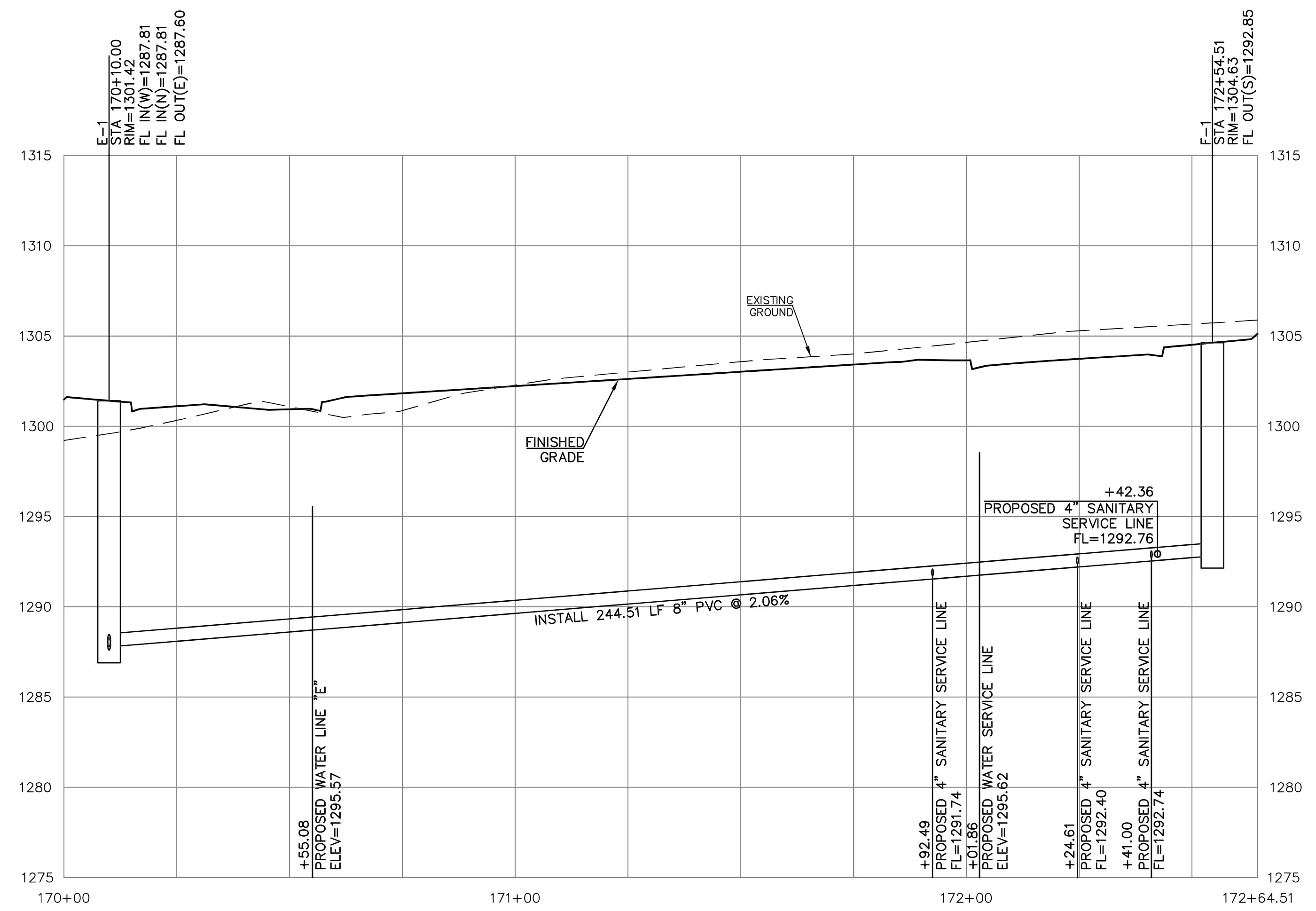


SCALE:
 PLAN: 1"=20'
 PROFILE: 1"=20' HORIZ.
 1"=5' VERT.



- SEPARATION OF WATER MAINS AND SANITARY SEWERS:**
1. A MINIMUM HORIZONTAL DISTANCE OF 10 FEET SHALL BE MAINTAINED BETWEEN WATER AND SEWER LINES. AT POINT WHERE SEWERS CROSS WATER MAINS, THE SEWER SHALL BE CONSTRUCTED OF PLASTIC PIPE FOR A DISTANCE OF 10 FEET IN EACH DIRECTION OF THE CROSSING UNLESS THE WATER MAIN IS AT LEAST 2 FEET ABOVE THE SEWER.
 2. WHERE A WATER MAIN MUST CROSS A SEWER LINE, MAINTAIN 2 FEET VERTICAL SEPARATION WITH THE WATER MAIN ABOVE THE SEWER.
 3. BUILDERS TO MAINTAIN MINIMUM 10' SEPARATION FROM SEWER MANHOLES WHEN RUNNING WATER SERVICE LINES TO HOUSE.
 4. ALL SANITARY SEWER SERVICE LINE WILL BE AT A MIN 2% GRADE.
 5. ALL NORTHING AND EASTING WAS TAKEN FROM CENTER OF STRUCTURE. REFERENCE DETAIL FOR ACTUAL LID LOCATION.

PROJ. NO.	E23D3488
DESIGNER	JMO
DRAWN BY	LR/TA
CFN	3488SPP
SHEET	25
REV	0

JUSTIN M. OWENS
 ENGINEER
 KS # 20933

1627 SUNFLOWER LANE
 SALINA, KANSAS 67401
 785-825-1111
 info@kve.com | www.kve.com

KAW VALLEY ENGINEERING
 KAW VALLEY ENGINEERING, INC. IS AUTHORIZED TO OFFER ENGINEERING SERVICES BY KANSAS STATE CERTIFICATE OF AUTHORIZATION # E-113. EXPIRES 12/31/24

WHEATLAND VALLEY ADDITION
 MARKLEY ROAD
 SALINA, KANSAS 67401

PHASE 2
SANITARY SEWER PLAN & PROFILE

JMO	TDA	JMO	JMO
DSN	DWN	CHK	CHK