

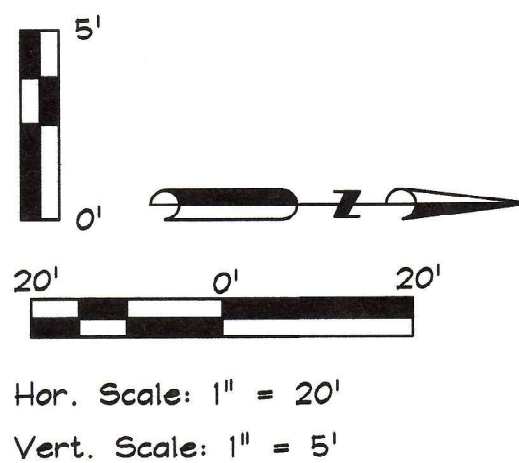
Wright Sta. 14+05.5 21.5' Lt.
 Install 8"x6" Tee, 6" Valve w/ Box
 & 6" Fire Hydrant. Valve & Fire
 Hydrant to be placed at the
 minimum behind the left curb.

Linderbergh Sta. 20+30.7 24.0' Lt.
 Install 8"x6" Tee, install 6" Valve w/
 Box on Line North. Install 6" Valve w/
 at the minimum behind the curb.

Wright Sta. 13+31.34 20.50' Rt.
 Construct Sanitary Sewer
 Manhole #15 Continue 8" PVC
 Lateral Line North for 346.00 L.F.
 @ 0.50% grade.
 Top=1242.20
 FL in (N)=1233.74
 FL Out (S)=1233.72
 FL Centerline=1233.73
 N=166,327.82 E=1,418,228.36

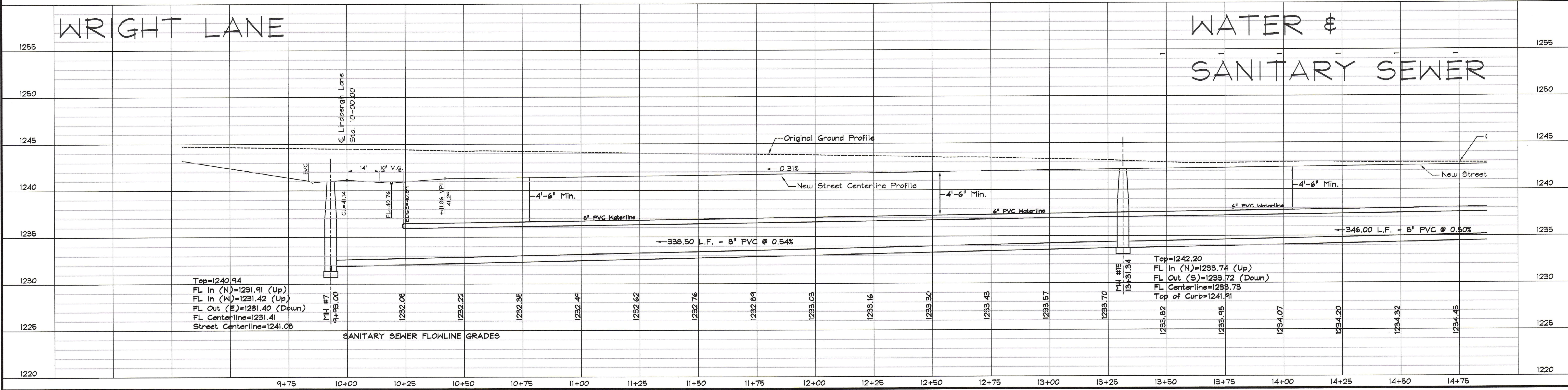
Linderbergh Sta. 20+73.14 7.00' Rt.
 Construct Sanitary Sewer Manhole #7
 Continue 10" PVC Main Line East for
 290.01 L.F. @ 0.50% grade.
 BVC 1 meter 1 line North from Sta. 20+73.14

Linderbergh Sta. 20+73.14 7.00' Rt.
 Install 8"x6"
 & 6" Fire H



WRIGHT LANE

WATER & SANITARY SEWER



Top=1240.94
 FL in (N)=1231.91 (Up)
 FL in (N)=1231.42 (Up)
 FL Out (E)=1231.40 (Down)
 FL Centerline=1231.41
 Street Centerline=1241.05

Top=1242.20
 FL in (N)=1233.74 (Up)
 FL Out (S)=1233.72 (Down)
 FL Centerline=1233.73
 Top of Curb=1241.91