

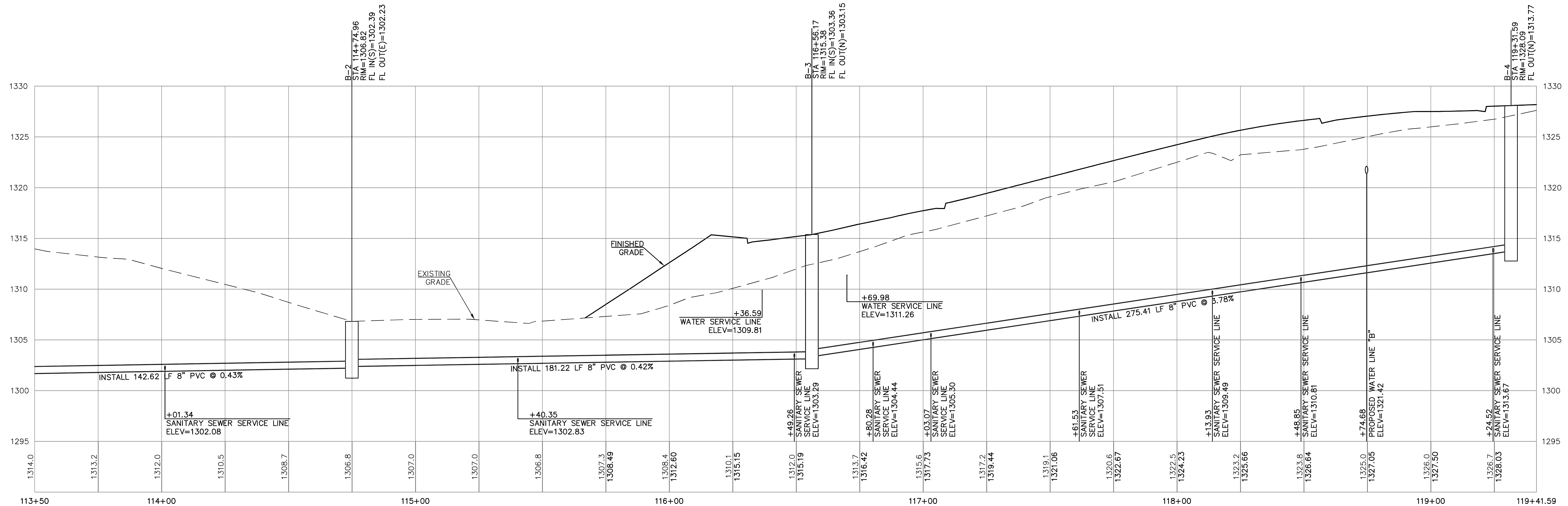
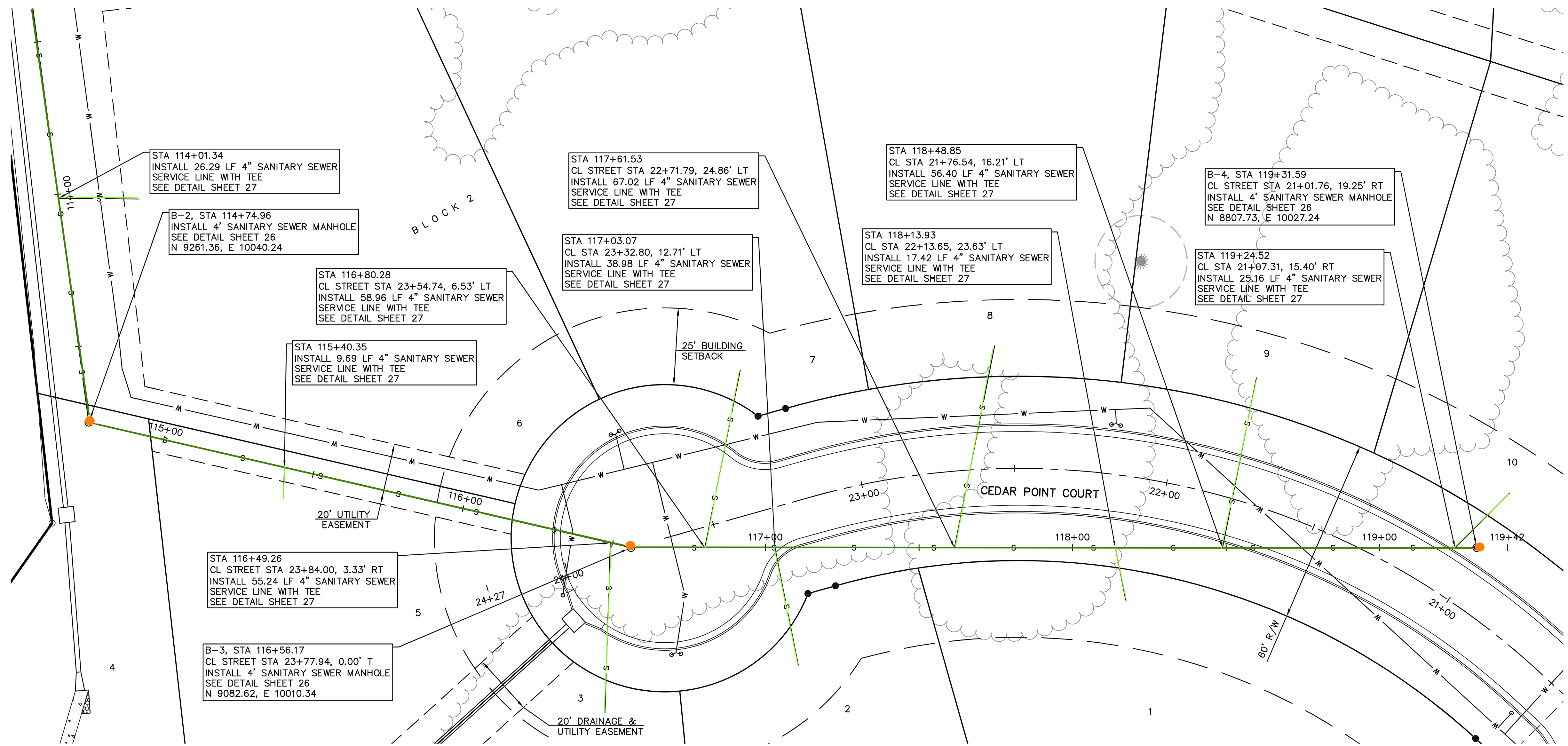
SCALE:
 PLAN: 1"=20'
 PROFILE: 1"=20' HORIZ.
 1"=5' VERT.

SEPARATION OF WATER MAINS AND SANITARY SEWERS:

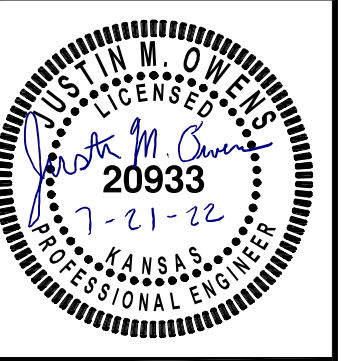
1. A MINIMUM HORIZONTAL DISTANCE OF 10 FEET SHALL BE MAINTAINED BETWEEN WATER (MAINS AND SERVICE) AND SANITARY SEWER (MAINS AND SERVICE) LINES.
2. WHERE A WATER MAIN MUST CROSS A SEWER LINE, MAINTAIN 2 FEET VERTICAL SEPARATION WITH THE WATER MAIN ABOVE THE SEWER.
3. BUILDERS TO MAINTAIN MINIMUM 10' SEPARATION FROM THE OUTSIDE EDGE OF SANITARY SEWER MANHOLES TO THE OUTSIDE EDGE OF WATER SERVICE LINES WHEN RUNNING SERVICE LINES TO HOUSE.

GENERAL NOTES:

1. ALL SANITARY SEWER SERVICE LINE WILL BE AT A MIN 2% GRADE.
2. ALL NORTHING AND EASTING WAS TAKEN FROM CENTER OF STRUCTURE. REFERENCE DETAIL FOR ACTUAL LID LOCATION.



DESIGNER	JMO	TDA	JMO
CHECKER	JMO	TDA	JMO
DATE	07/21/22	DATE	07/21/22
REV	0	REV	0
DESCRIPTION	INITIAL ISSUE	DESCRIPTION	INITIAL ISSUE



JUSTIN M. OWENS
 ENGINEER
 KS # 20933

742 DUVALL AVENUE
 SALINA, KANSAS 67401 823-3411
 PH. (785) 820-1000 | www.kvweng.com

KAW VALLEY ENGINEERING

KAW VALLEY ENGINEERING, INC. IS AUTHORIZED TO OFFER ENGINEERING SERVICES BY KANSAS STATE CERTIFICATE OF AUTHORIZATION # E-113. EXPIRES 12/31/22

CEDAR POINT ADDITION
 CEDAR RIDGE DRIVE
 SALINA, KANSAS 67401

SANITARY SEWER LINE 'B' - PLAN & PROFILE

PROJ. NO.	E19D2323-1
DESIGNER	JMO
DRAWN BY	TDA
CFN	2323-1SP
SHEET	25
REV	0