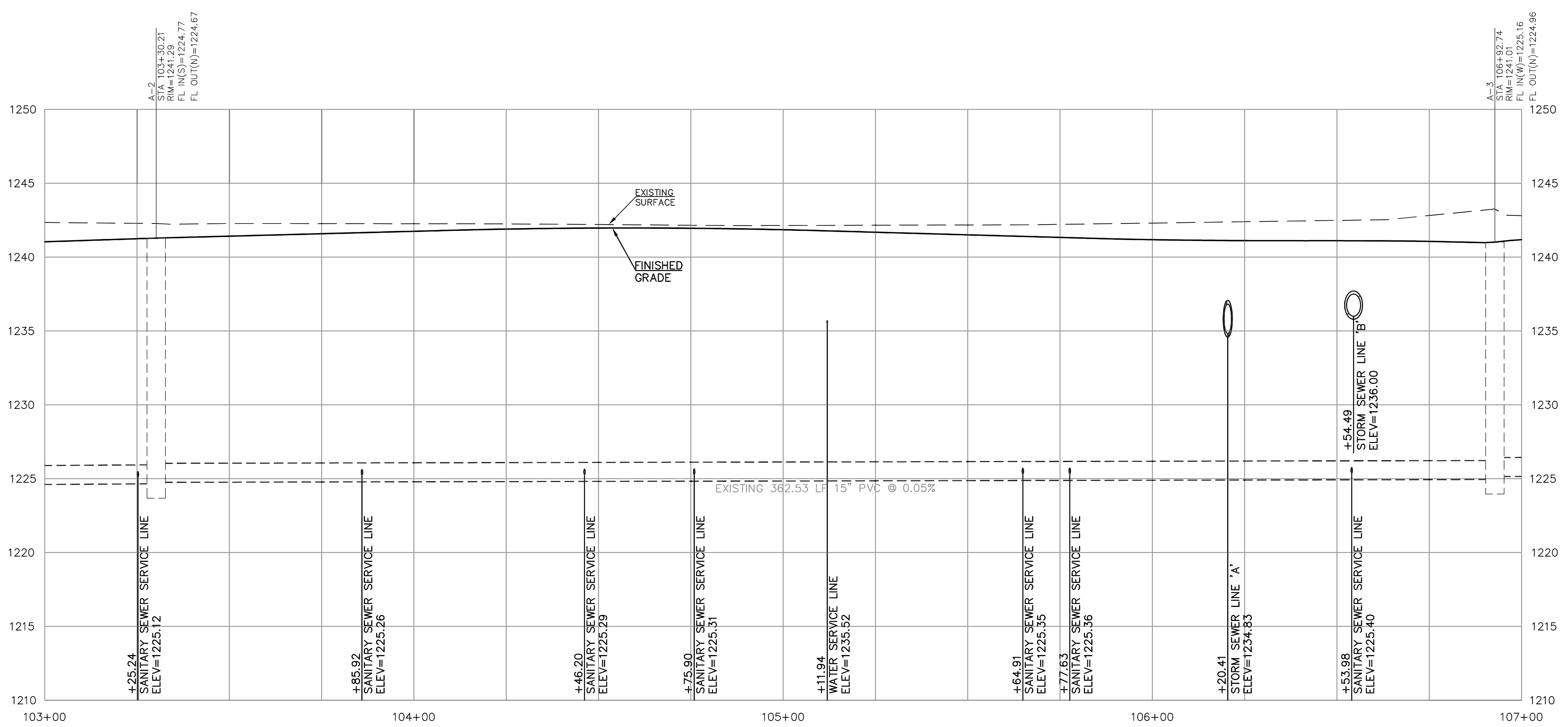


SCALE:  
PLAN: 1"=20'  
PROFILE: 1"=20' HORIZ.  
1"=5' VERT.



- SEPARATION OF WATER MAINS AND SANITARY SEWERS:**
1. A MINIMUM HORIZONTAL DISTANCE OF 10 FEET SHALL BE MAINTAINED BETWEEN WATER (MAINS AND SERVICE) AND SANITARY SEWER (MAINS AND SERVICE) LINES.
  2. WHERE A WATER MAIN MUST CROSS A SEWER LINE, MAINTAIN 2 FEET VERTICAL SEPARATION WITH THE WATER MAIN ABOVE THE SEWER.
  3. BUILDERS TO MAINTAIN MINIMUM 10' SEPARATION FROM THE OUTSIDE EDGE OF SANITARY SEWER MANHOLES TO THE OUTSIDE EDGE OF WATER SERVICE LINES WHEN RUNNING SERVICE LINES TO HOUSE.
- GENERAL NOTES:**
1. ALL SANITARY SEWER SERVICE LINE WILL BE AT A MIN 2% GRADE.
  2. ALL NORTHING AND EASTING WAS TAKEN FROM CENTER OF STRUCTURE. REFERENCE DETAIL FOR ACTUAL LID LOCATION.

PROJ. NO.	E21D2859
DESIGNER	JMO
DRAWN BY	TDA
CFN	2859SPP
SHEET	26
REV	0

**STONE LAKE ADDITION - PHASE 3C**  
CRYSTAL LAKE DRIVE & SHORELINE DRIVE  
SALINA, KANSAS

**OFFICE CHECK**  
SANITARY SEWER LINE 'A' - PLAN & PROFILE

JUSTIN M. OWENS  
ENGINEER  
KS # 20933

742 DUVAL AVENUE  
SALINA, KANSAS 67401 823-3411  
PH. (785) 823-3411  
jowens@kvweng.com | www.kvweng.com

**KAW VALLEY ENGINEERING**  
KAW VALLEY ENGINEERING, INC. IS AUTHORIZED TO OFFER ENGINEERING SERVICES BY KANSAS STATE CERTIFICATE OF AUTHORIZATION # E-113. EXPIRES 12/31/22

0 01/11/22 INITIAL ISSUE

REV DATE DESCRIPTION

JMO TDA  
DSN DWN  
JMO CHK