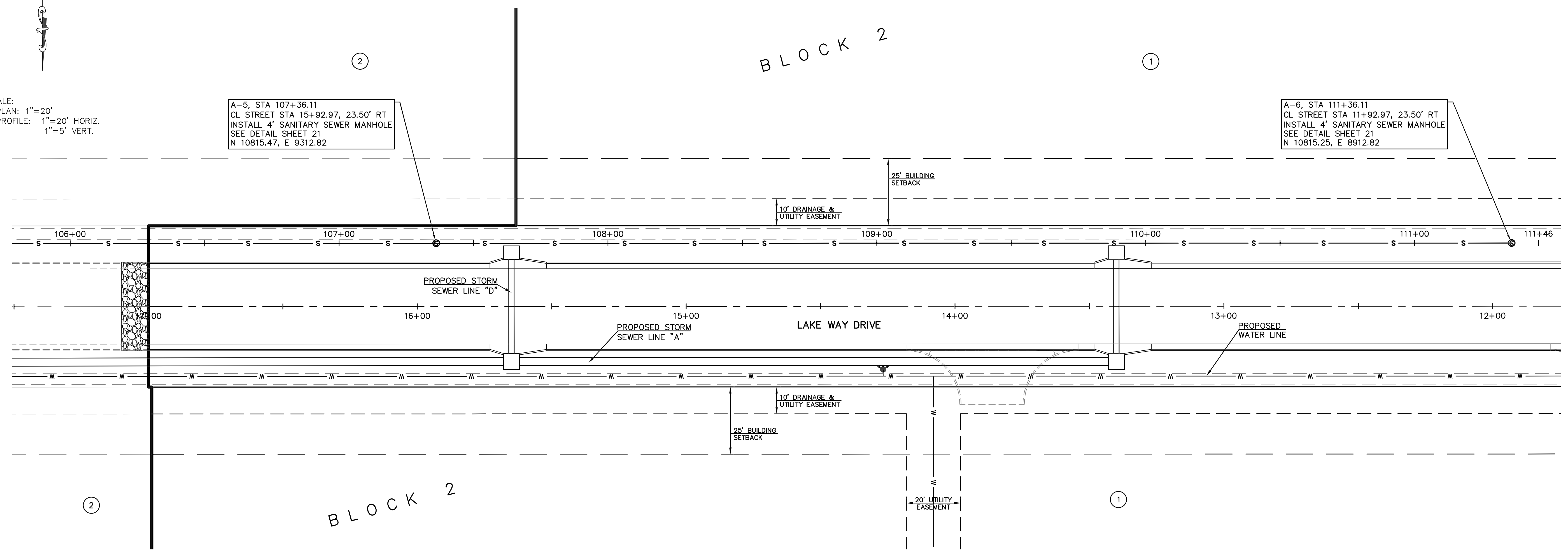
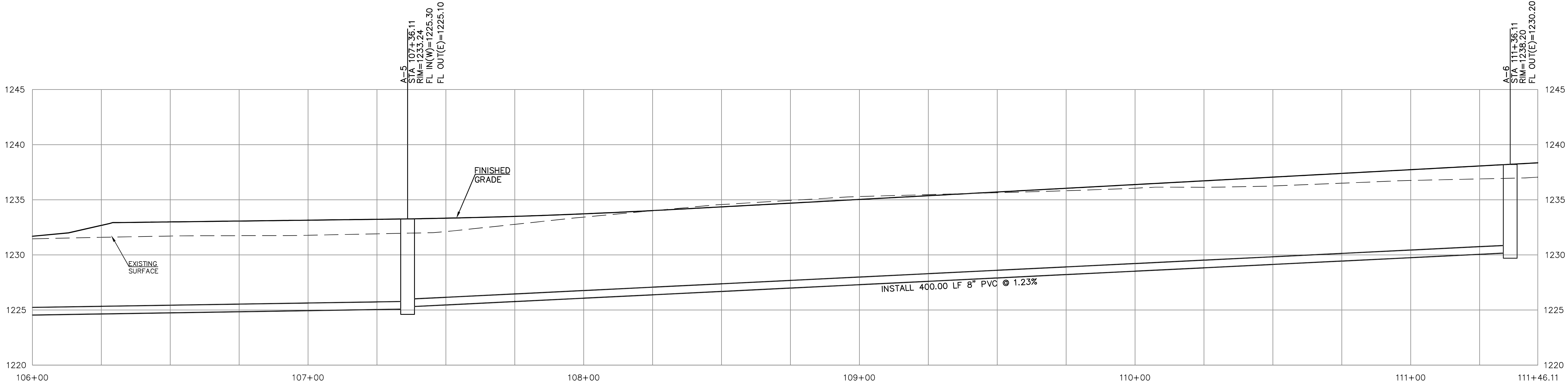


SCALE:
 PLAN: 1"=20'
 PROFILE: 1"=20' HORIZ.
 1"=5' VERT.



SEPARATION OF WATER MAINS AND SANITARY SEWERS:

1. A MINIMUM HORIZONTAL DISTANCE OF 10 FEET SHALL BE MAINTAINED BETWEEN WATER (MAINS AND SERVICE) AND SANITARY SEWER (MAINS AND SERVICE) LINES. AT POINT WHERE SEWERS CROSS WATER MAINS, THE SEWER SHALL BE CONSTRUCTED OF CAST IRON, PLASTIC PIPE WITH NON-JOINTED PLASTIC PIPE, OR PIPE ENCASED IN CONCRETE FOR A DISTANCE OF 10 FEET EACH SIDE OF THE CROSSING AS MEASURED FROM THE OUTSIDE DIAMETER OF THE SEWER LINE (EDGE-TO-EDGE), NOT ITS CENTERLINE, UNLESS THE WATER MAIN IS AT LEAST 2 FEET ABOVE THE SEWER.
2. WHERE A WATER MAIN MUST CROSS A SEWER LINE, MAINTAIN 2 FEET VERTICAL SEPARATION WITH THE WATER MAIN ABOVE THE SEWER.
3. ALL NORthing AND EASTING WAS TAKEN FROM CENTER OF STRUCTURE. REFERENCE DETAIL FOR ACTUAL LID LOCATION.



JMO		JMO	JMO	JMO
TDA		DSN	DWN	CHK
12/13/21		INITIAL ISSUE	DESCRIPTION	
0	REV	DATE	DESCRIPTION	
JUSTIN M. OWENS ENGINEER KS # 20933				
742 DUVAL AVENUE SALINA, KANSAS 67401 803-3411 PH. (785) 822-3411 www.kawvalley.com www.kve.com				
KAW VALLEY ENGINEERING, INC. IS AUTHORIZED TO OFFER ENGINEERING SERVICES BY KANSAS STATE CERTIFICATE OF AUTHORIZATION # E-113. EXPIRES 12/31/22				
LAKEVIEW ESTATES ADDITION NO. 2 SOUTH OHIO STREET SALINA, KANSAS 67401				
PHASE 1 SANITARY SEWER LINE 'A' - PLAN & PROFILE				
PROJ. NO.		E21D2913		
DESIGNER	JMO	DRAWN BY	TDA	
CFN	2913SPP			
SHEET	20	REV	0	