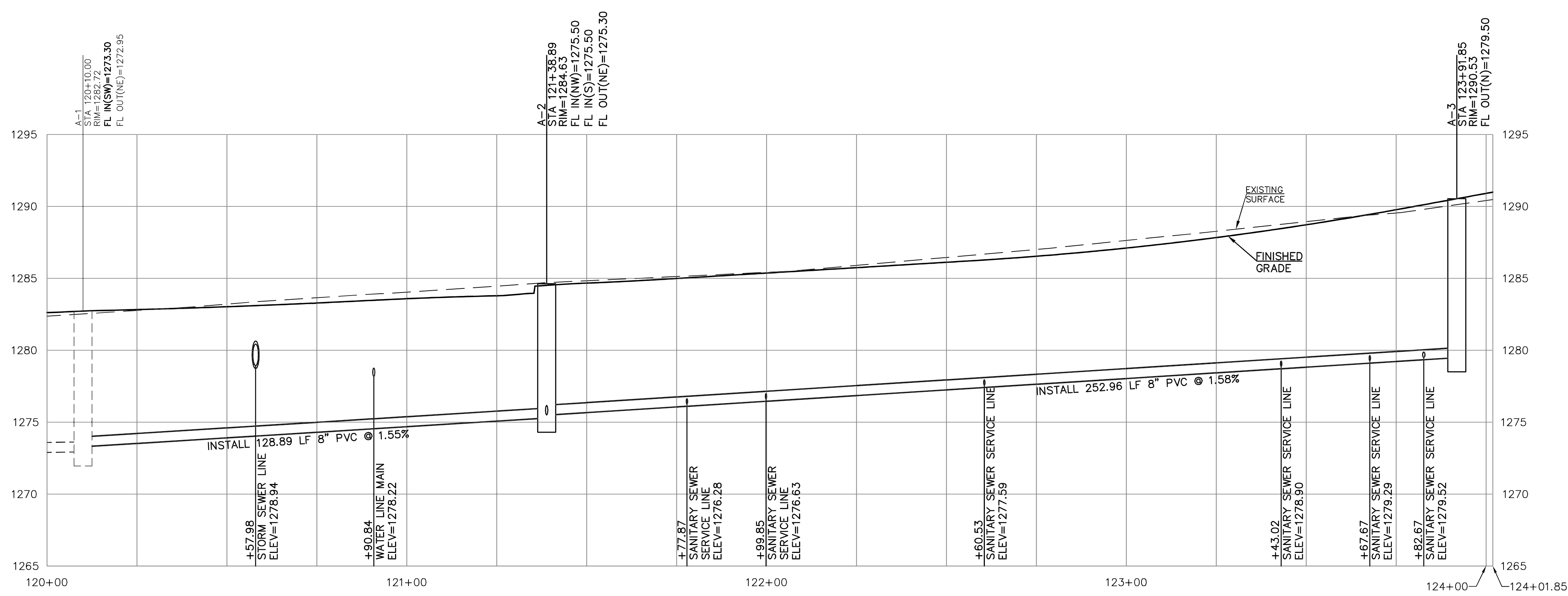
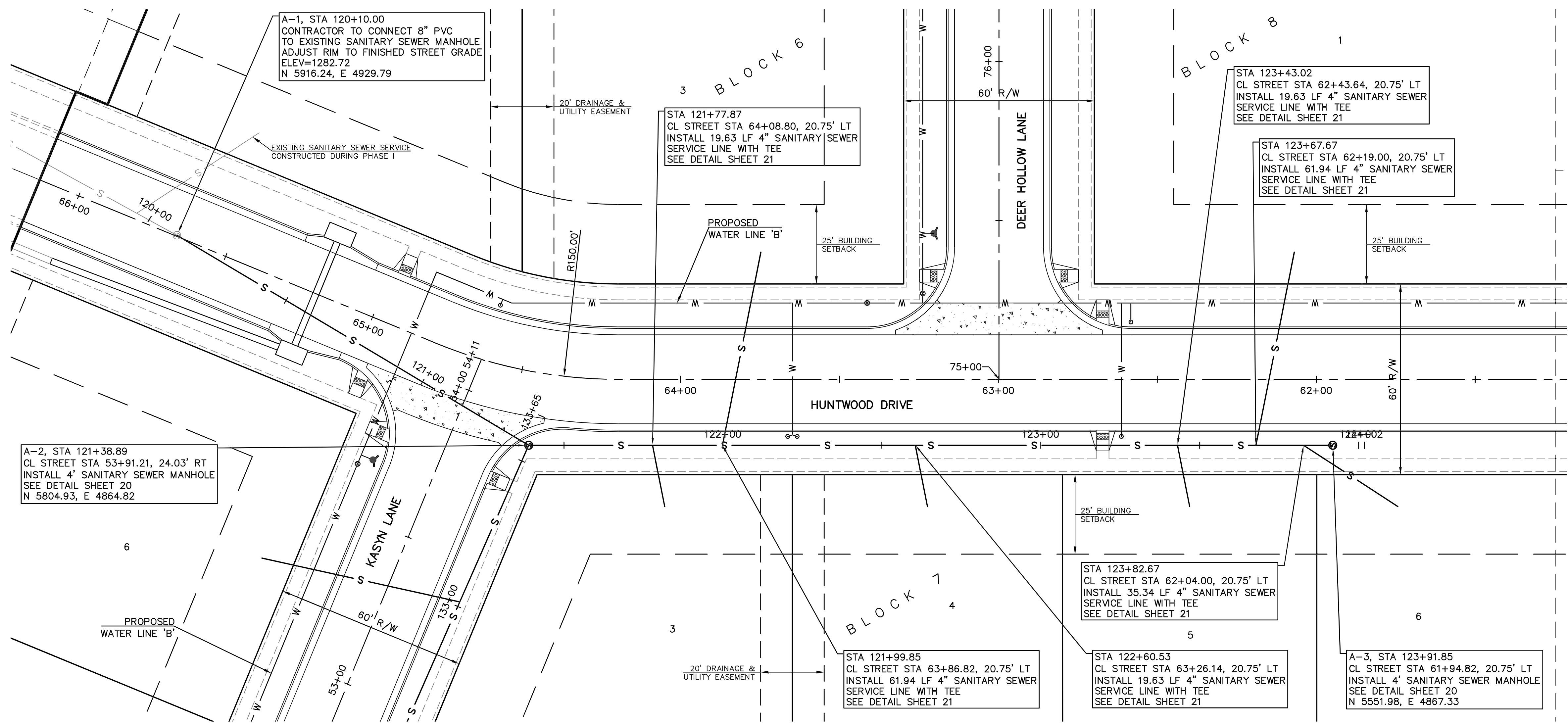


SCALE:
 PLAN: 1"=20'
 PROFILE: 1"=20' HORIZ.
 1"=5' VERT.



- SEPARATION OF WATER MAINS AND SANITARY SEWERS:**
1. A MINIMUM HORIZONTAL DISTANCE OF 10 FEET SHALL BE MAINTAINED BETWEEN WATER (MAINS AND SERVICE) AND SANITARY SEWER (MANS AND SERVICE) LINES. AT POINT WHERE SEWERS CROSS WATER MAINS, THE SEWER SHALL BE CONSTRUCTED OF CAST IRON, PLASTIC PIPE WITH NON-JOINTED PLASTIC PIPE, OR PIPE ENCASED IN CONCRETE FOR A DISTANCE OF 10 FEET EACH SIDE OF THE CROSSING AS MEASURED FROM THE OUTSIDE DIAMETER OF THE SEWER LINE (EDGE-TO-EDGE), NOT ITS CENTERLINE, UNLESS THE WATER MAIN IS AT LEAST 2 FEET ABOVE THE SEWER.
 2. WHERE A WATER MAIN MUST CROSS A SEWER LINE, MAINTAIN 2 FEET VERTICAL SEPARATION WITH THE WATER MAIN ABOVE THE SEWER.
 3. BUILDERS TO MAINTAIN MINIMUM 10' SEPARATION FROM THE OUTSIDE EDGE OF SANITARY SEWER MANHOLES TO THE OUTSIDE EDGE OF WATER SERVICE LINES WHEN RUNNING SERVICE LINES TO HOUSE.
 4. ALL SANITARY SEWER SERVICE LINE WILL BE AT A MIN 2% GRADE.
 5. ALL NORTHING AND EASTING WAS TAKEN FROM CENTER OF STRUCTURE. REFERENCE DETAIL FOR ACTUAL LID LOCATION.

SANITARY SEWER LINE 'A'

PROJ. NO.	E21D2818
DESIGNER	JMO
DRAWN BY	TDA
CFN	2818SPP
SHEET	17
REV	0

MAGNOLIA HILLS ESTATES ADD. NO. 2
 HUNTHOOD DRIVE & KASYN LANE
 SALINA, KANSAS 67401

PHASE II
 SANITARY SEWER LINE 'A' - PLAN & PROFILE

JUSTIN M. OWENS
 ENGINEER
 KS # 20933

742 DUVALL AVENUE
 SALINA, KANSAS 67401
 PH. (785) 823-3411
 www.kawvalley.com

KAW VALLEY ENGINEERING
 KAW VALLEY ENGINEERING, INC. IS AUTHORIZED TO OFFER ENGINEERING SERVICES BY KANSAS STATE CERTIFICATE OF AUTHORIZATION # E-1113. EXPIRES 12/31/22

REV	DATE	DESCRIPTION
0	10/28/21	INITIAL ISSUE
JMO	TDA	DSN
JMO	DWN	CHK

THIS DRAWING SHALL NOT BE UTILIZED BY ANY PERSON, FIRM, OR CORPORATION IN WHOLE OR IN PART WITHOUT THE SPECIFIC PERMISSION OF KAW VALLEY ENGINEERING, INC.