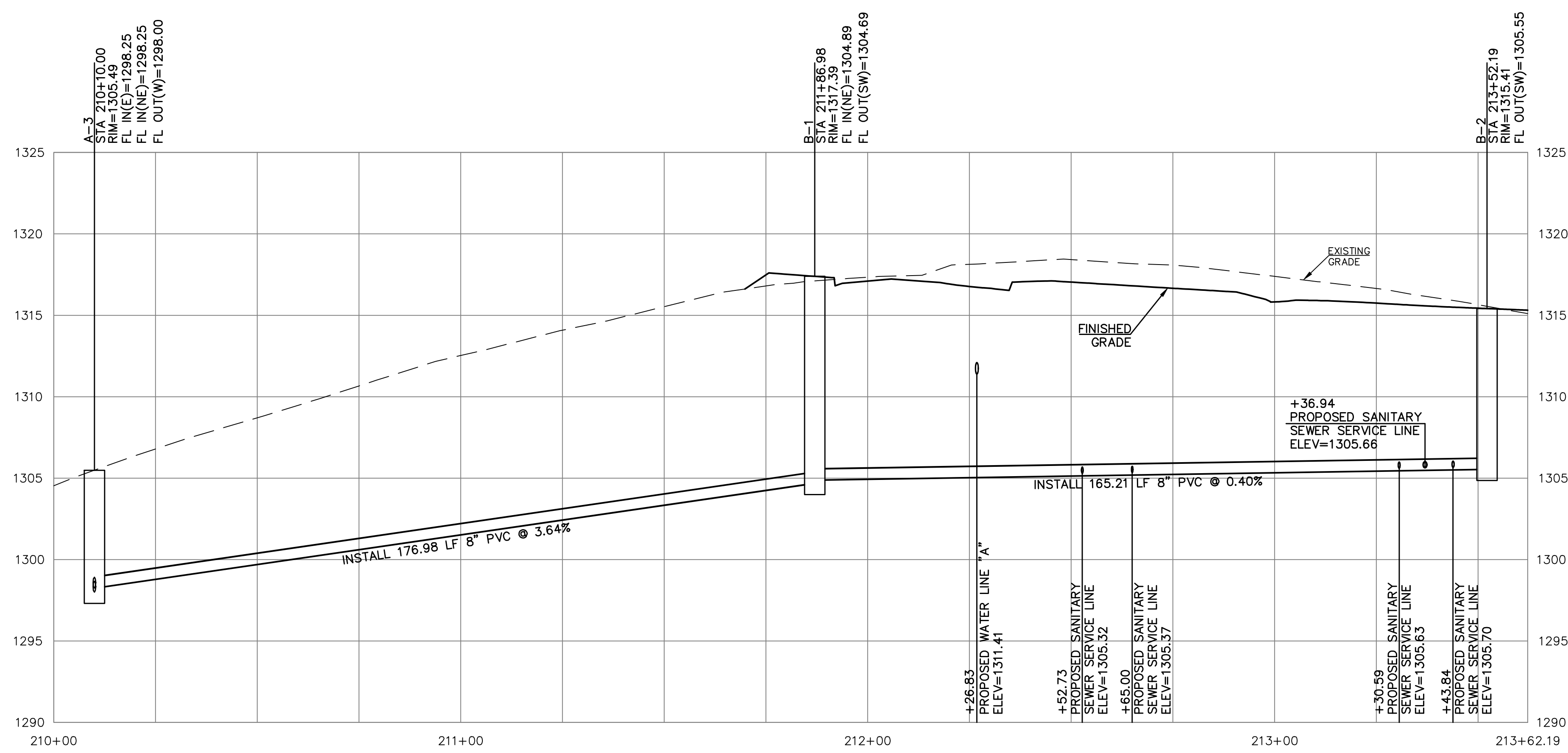


SCALE:
 PLAN: 1"=20'
 PROFILE: 1"=20' HORIZ.
 1"=5' VERT.

- SEPARATION OF WATER MAINS AND SANITARY SEWERS:**
1. A MINIMUM HORIZONTAL DISTANCE OF 10 FEET SHALL BE MAINTAINED BETWEEN WATER AND SEWER LINES. AT POINT WHERE SEWERS CROSS WATER MAINS, THE SEWER SHALL BE CONSTRUCTED OF DUCTILE IRON PIPE WITH GASKETED, PUSH ON, OR MECHANICAL JOINTS, PVC WITH GASKETED PUSH ON JOINTS, OR PIPE ENCASED IN CONCRETE FOR A DISTANCE OF 10 FEET BEYOND THE OUTER DIAMETER OF THE WATER MAIN BEING CROSSED IN EACH DIRECTION OF THE CROSSING UNLESS THE WATER MAIN IS AT LEAST 2 FEET ABOVE THE SEWER. THESE PROVISIONS ALSO APPLY WHERE WATER SERVICE LINES AND SANITARY SEWER LATERALS ARE CONCERNED.
 2. WHERE A WATER MAIN MUST CROSS A SEWER LINE, MAINTAIN 2 FEET VERTICAL SEPARATION WITH THE WATER MAIN ABOVE THE SEWER.
 3. BUILDERS TO MAINTAIN MINIMUM 10' SEPARATION FROM SEWER MANHOLES WHEN RUNNING WATER SERVICE LINES TO HOUSE.
 4. ALL SANITARY SEWER SERVICE LINE WILL BE AT A MIN 2% GRADE.
 5. ALL NORTHING AND EASTING WAS TAKEN FROM CENTER OF STRUCTURE. REFERENCE DETAIL FOR ACTUAL LID LOCATION.



0	09/08/21	INITIAL ISSUE	JMO	TDA	JMO	CHK
		REV	DATE	DESCRIPTION	DSN	DWN

JUSTIN M. OWENS
 ENGINEER
 KS # 20933

742 DUVAL AVENUE
 SALINA, KANSAS 67401 823-3411
 PH. (785) 820-1000 | www.kawvalley.com

KAW VALLEY ENGINEERING
 KAW VALLEY ENGINEERING, INC. IS AUTHORIZED TO OFFER ENGINEERING SERVICES BY KANSAS STATE CERTIFICATE OF AUTHORIZATION # E-113. EXPIRES 12/31/22

CEDAR RIDGE ADDITION - PHASE 2
 TIMBER RIDGE DRIVE
 SALINA, KANSAS 67401

SITE DEVELOPMENT PLANS
 SANITARY SEWER LINE 'B' - PLAN & PROFILE

DESIGNER	JMO	DRAWN BY	TDA
CFN	2322-1SPP	SHEET	21
PROJ. NO.	E19D2322-1	REV	0