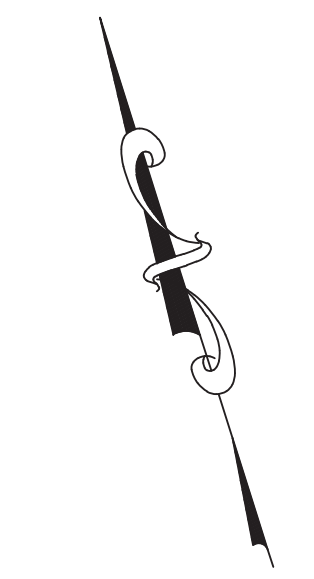


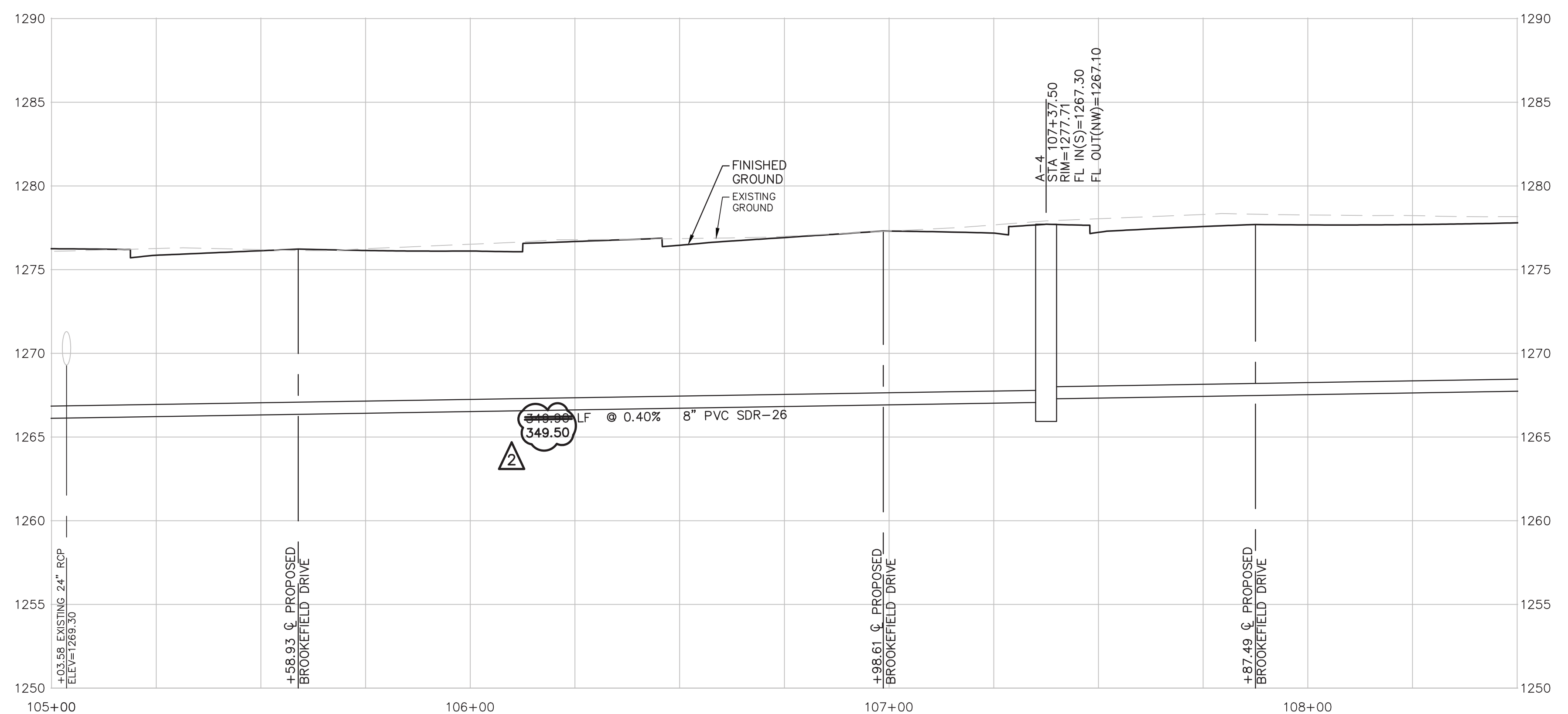
STA 107+37.50
CL STREET STA 21+32.56, 21.50' RT
CONSTRUCT SANITARY SEWER
MANHOLE A-4
SEE DETAIL SHEET C28
N 5191.7472
E 4212.7578

STA 105+87.00
CL STREET STA 22+81.19, 10.50' LT
INSTALL 21\"/>

STA 105+50.88
CL STREET STA 23+15.40, 3.24' RT
INSTALL 36\"/>



SCALE:
PLAN: 1"=20' HORIZ.
PROFILE: 1"=20' HORIZ.
1"=5' VERT.



SANITARY SEWER LINE "A"

AS-BUILT

PROJ. NO.	A13_6322
DESIGNER	SDM
DRAWN BY	JT
CFN	6322SPP
SHEET	C23
REV	2

REV	DATE	DESCRIPTION
0	5-17-13	INITIAL ISSUE
1	8-19-13	UPDATED PER KOHE REVIEW COMMENT
2	3-12-14	AS-BUILT PLANS

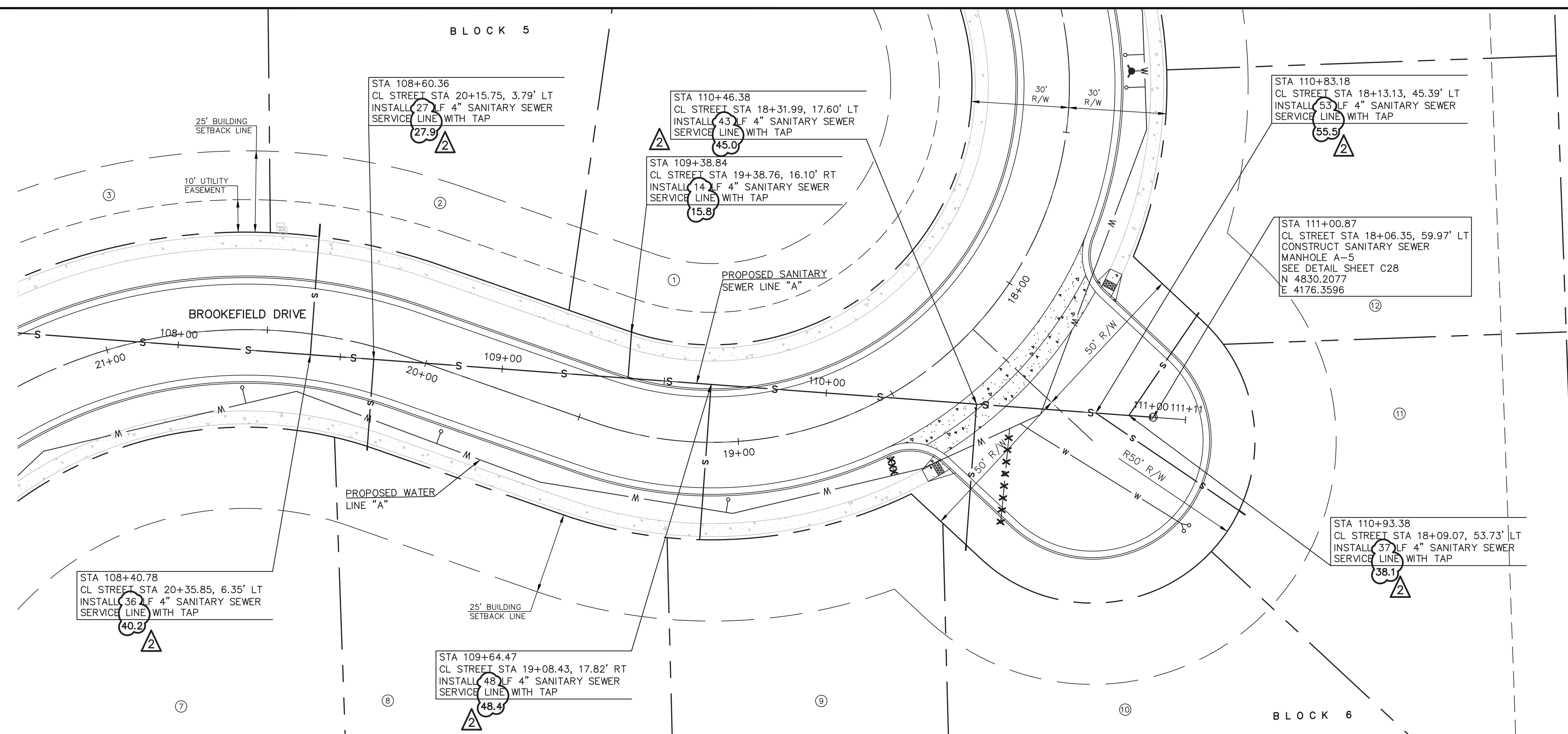
KAW VALLEY ENGINEERING, INC.
CONSULTING ENGINEERS - LAND SURVEYORS
2319 NORTH JACKSON | P.O. BOX 1304
JUNCTION CITY, KANSAS 66441
PH. (785) 762-5040 | FAX (785) 762-7744
jke@kve.com | www.kve.com

SAMUEL D. MALINOWSKY
LICENSED PROFESSIONAL ENGINEER
KANSAS # 12595

MAGNOLIA HILLS ESTATES PHASE IV
MARKLEY ROAD & BROOKSTONE DRIVE
SALINA, KANSAS

SANITARY SEWER LINE "A" - PLAN & PROFILE

THIS DRAWING SHALL NOT BE UTILIZED BY ANY PERSON, FIRM, OR CORPORATION IN WHOLE OR IN PART WITHOUT THE SPECIFIC PERMISSION OF KAW VALLEY ENGINEERING, INC.



SANITARY SEWER LINE "A"

SCALE:
 PLAN: 1"=20' HORIZ.
 PROFILE: 1"=20' HORIZ.
 1"=5' VERT.

AS-BUILT

PROJ. NO.	A13_6322
DESIGNER	SDM
DRAWN BY	JT
CFN	6322SPP
SHEET	C24

REV	DATE	DESCRIPTION
2	3-12-14	AS-BUILT PLANS
1	8-19-13	UPDATED PER KOHE REVIEW COMMENT
0	5-17-13	INITIAL ISSUE

SAMUEL D. MALINOWSKY
 ENGINEER
 KS # 12595

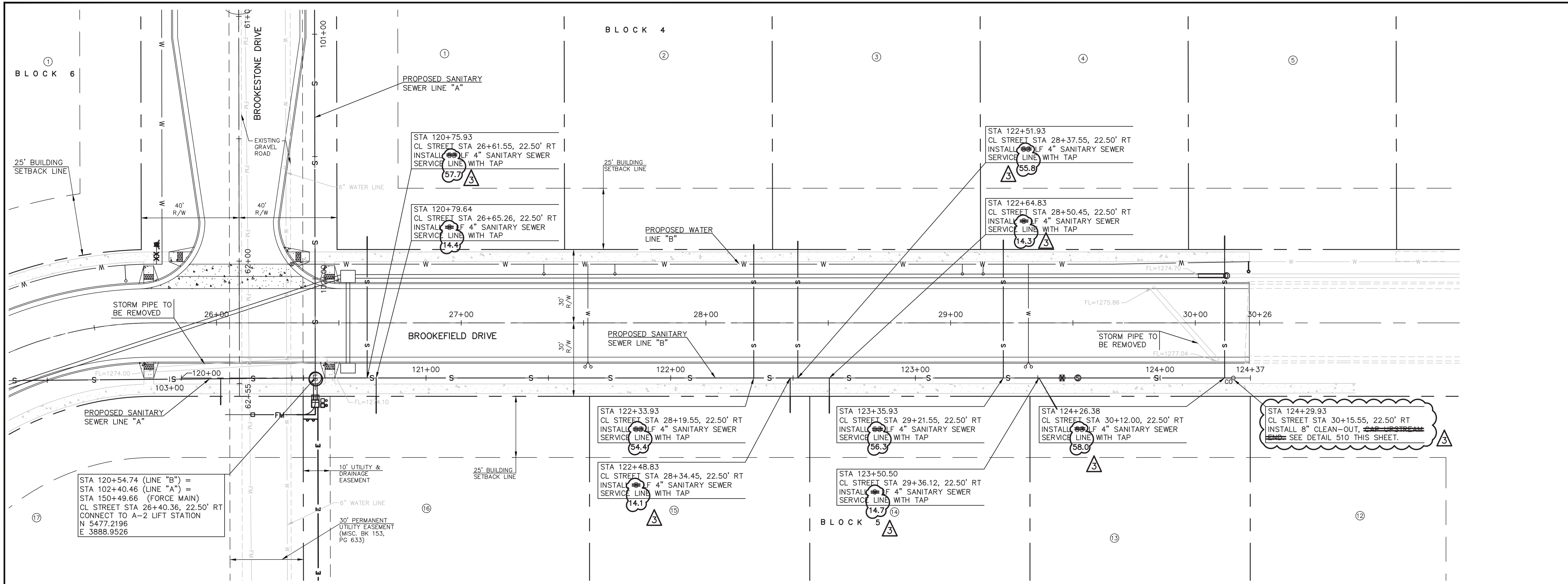
KAW VALLEY ENGINEERING, INC.
 CONSULTING ENGINEERS - LAND SURVEYORS
 2319 NORTH JACKSON | P.O. BOX 1304
 JUNCTION CITY, KANSAS 66441
 PH. (785) 762-5040 | FAX. (785) 762-7744
 jke@kve.com | www.kve.com

JUNCTION CITY, KS | KANSAS CITY, MO | LENEXA, KS | SALINA, KS
 KAW VALLEY ENGINEERING, INC. IS AUTHORIZED TO PROVIDE ENGINEERING SERVICES BY KANSAS STATE CERTIFICATE OF AUTHORIZATION # E-113. EXPIRES 12/31/14

MAGNOLIA HILLS ESTATES PHASE IV
MARKLEY ROAD & BROOKSTONE DRIVE
SALINA, KANSAS

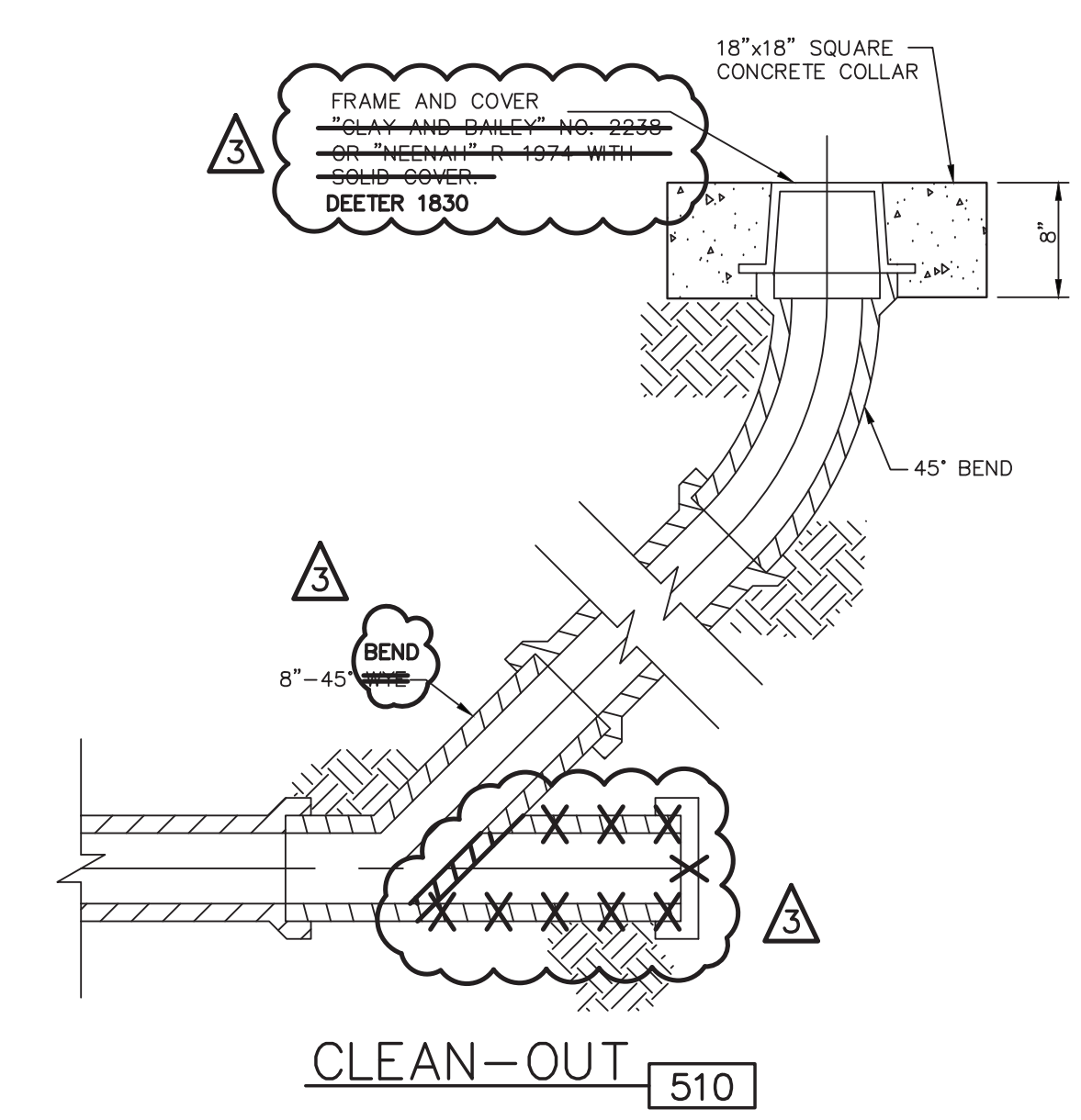
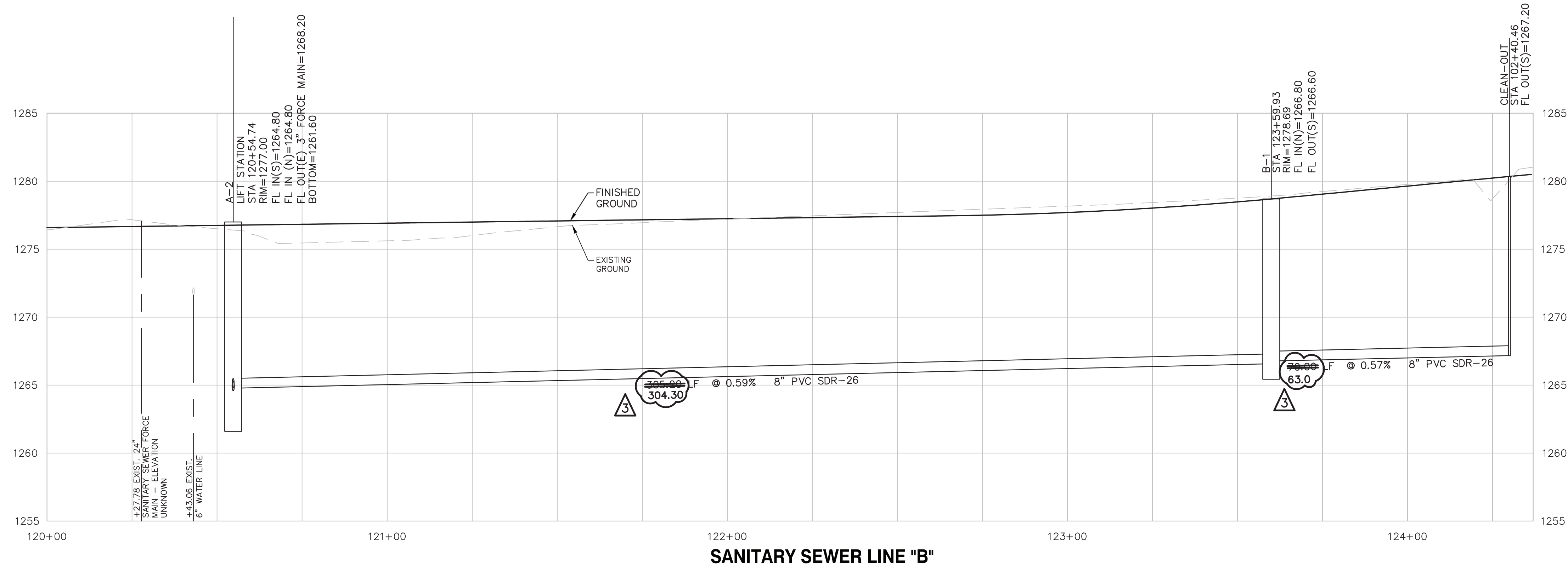
SANITARY SEWER LINE "A" - PLAN & PROFILE

THIS DRAWING SHALL NOT BE UTILIZED BY ANY PERSON, FIRM, OR CORPORATION IN WHOLE OR IN PART WITHOUT THE SPECIFIC PERMISSION OF KAW VALLEY ENGINEERING, INC.

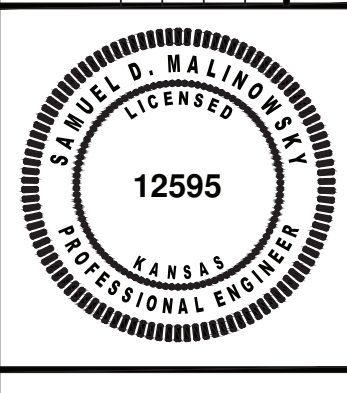


STA 120+54.74 (LINE "B") = STA 102+40.46 (LINE "A") = STA 150+49.66 (FORCE MAIN) CL STREET STA 26+40.36, 22.50' RT CONNECT TO A-2 LIFT STATION N 5477.2196 E 3888.9526

SCALE:
PLAN: 1"=20'
PROFILE: 1"=20' HORIZ.
1"=5' VERT.



REV	DATE	DESCRIPTION
3	3-12-14	AS-BUILT PLANS
2	11-6-13	PER CITY REQUEST
1	8-18-13	UPDATED PER KOHE REVIEW COMMENT
0	5-17-13	INITIAL ISSUE



SAMUEL D. MALINOWSKY
ENGINEER
KS # 12595

KAW VALLEY ENGINEERING, INC.
CONSULTING ENGINEERS - LAND SURVEYORS
2319 NORTH JACKSON | P.O. BOX 1304
JUNCTION CITY, KANSAS 66441
PH. (785) 762-5040 | FAX. (785) 762-7744
jke@kve.com | www.kve.com

JUNCTION CITY, KS | KANSAS CITY, MO | LENEXA, KS | SALINA, KS
KAW VALLEY ENGINEERING, INC. IS AUTHORIZED TO PROVIDE ENGINEERING SERVICES BY KANSAS STATE CERTIFICATE OF AUTHORIZATION # E-115. EXPIRES 12/31/14

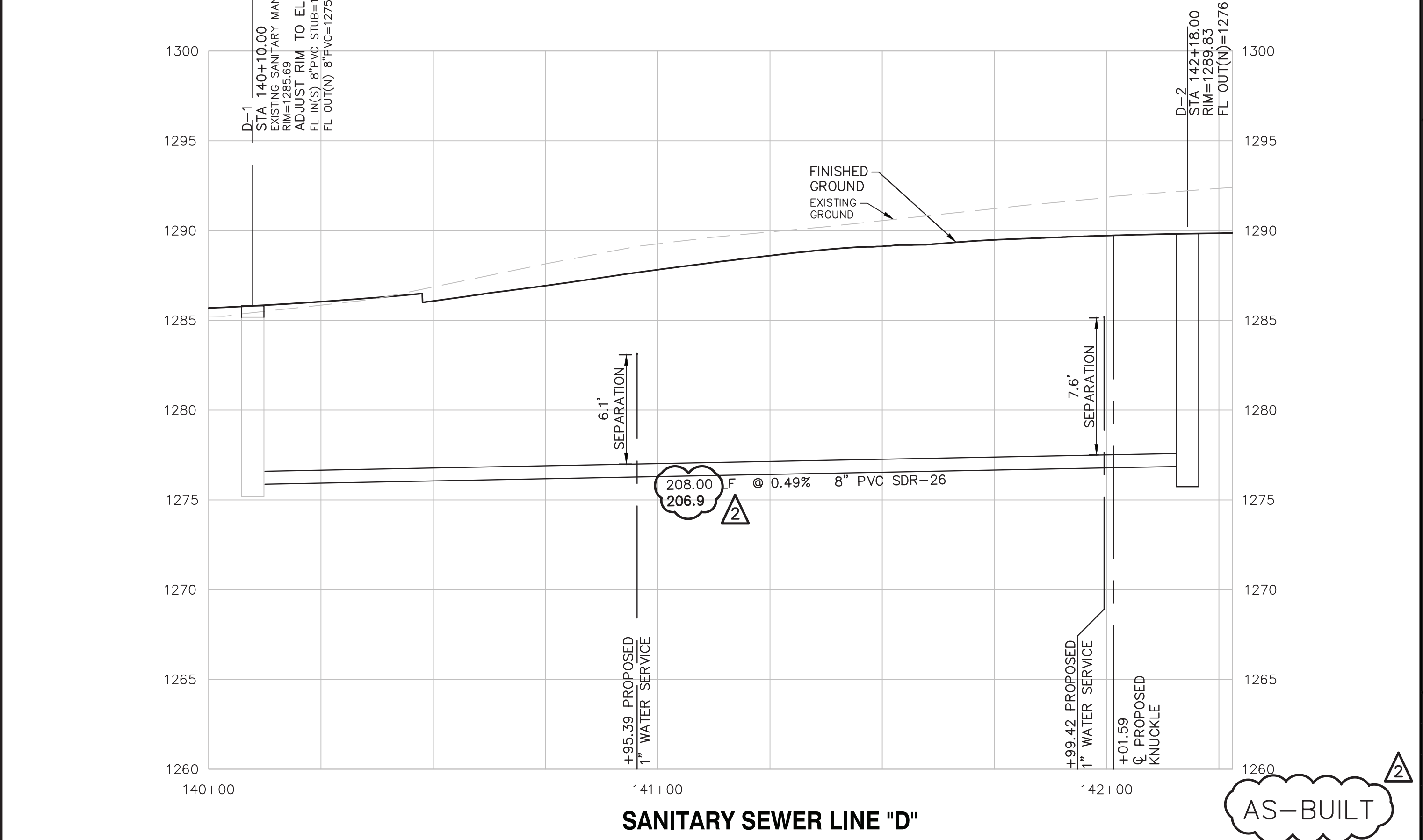
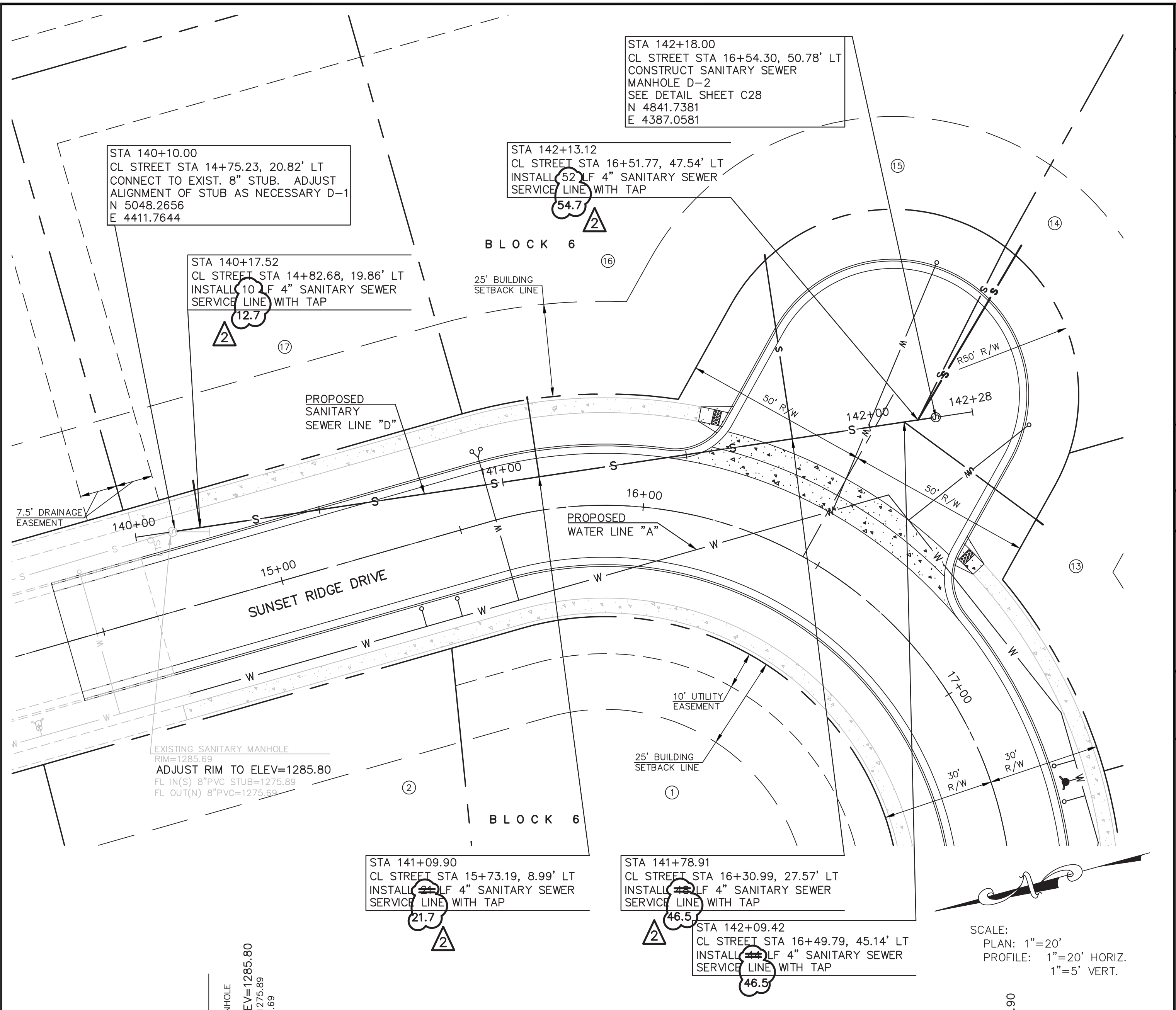
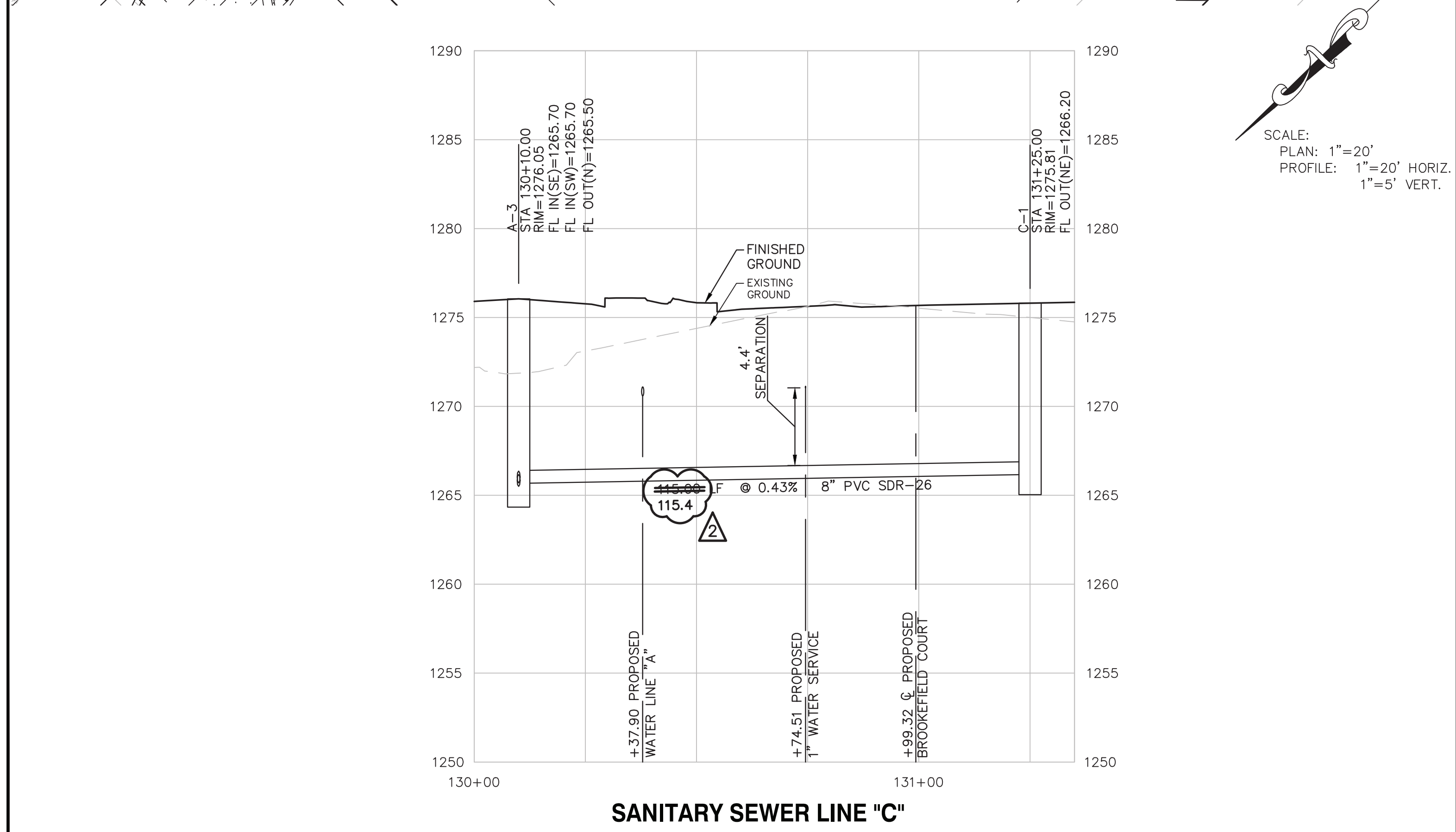
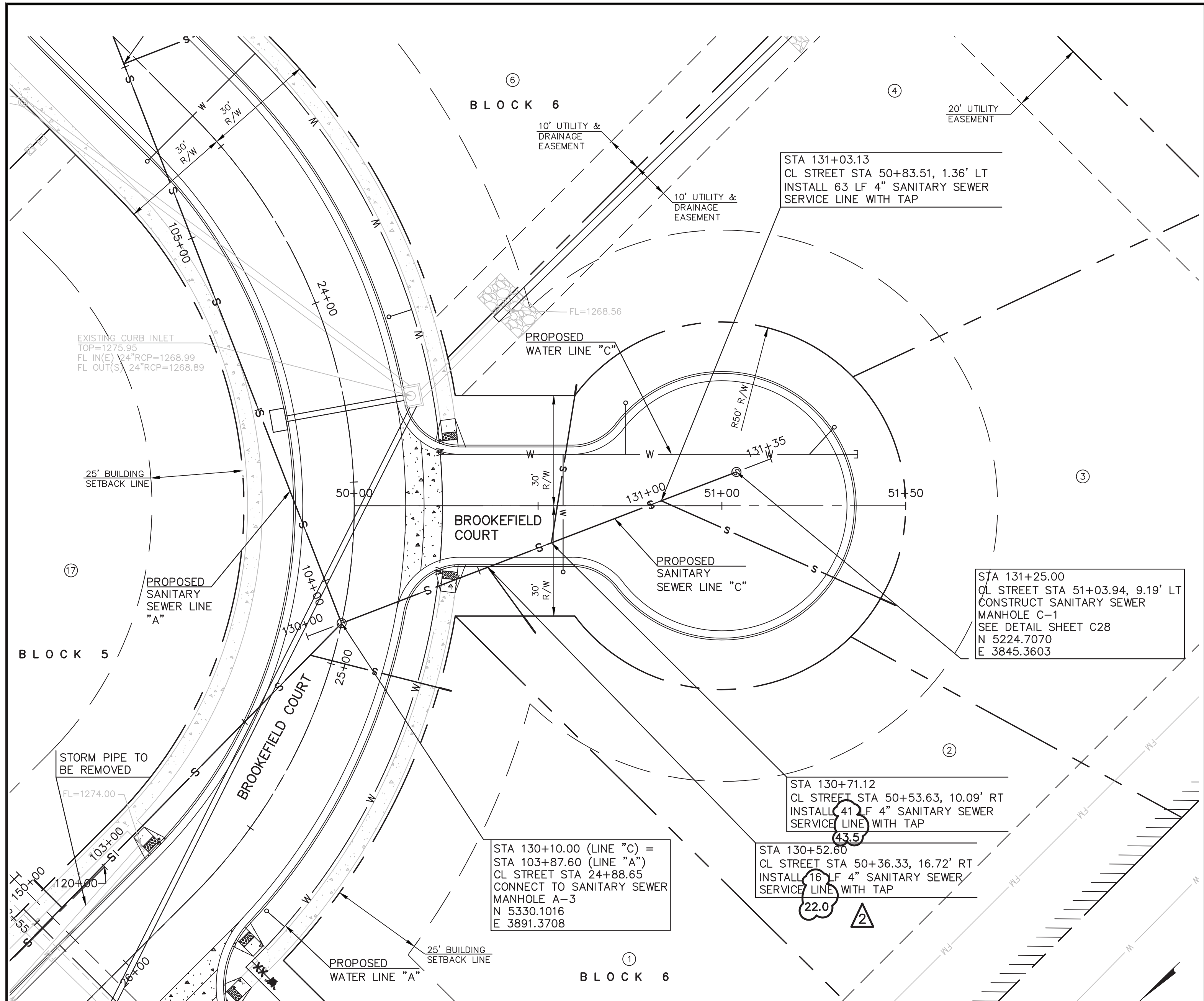
MAGNOLIA HILLS ESTATES PHASE IV
MARKLEY ROAD & BROOKSTONE DRIVE
SALINA, KANSAS

SANITARY SEWER LINE "B" - PLAN & PROFILE

PROJ. NO. A13_6322
DESIGNER: SDM
DRAWN BY: JT
CFN: 6322SPP
SHEET: C25

AS-BUILT

THIS DRAWING SHALL NOT BE UTILIZED BY ANY PERSON, FIRM, OR CORPORATION IN WHOLE OR IN PART WITHOUT THE SPECIFIC PERMISSION OF KAW VALLEY ENGINEERING, INC.



PROJ. NO.	A13_6322
DESIGNER	SDM
DRAWN BY	JT
CFN	6322SPP
SHEET	C26

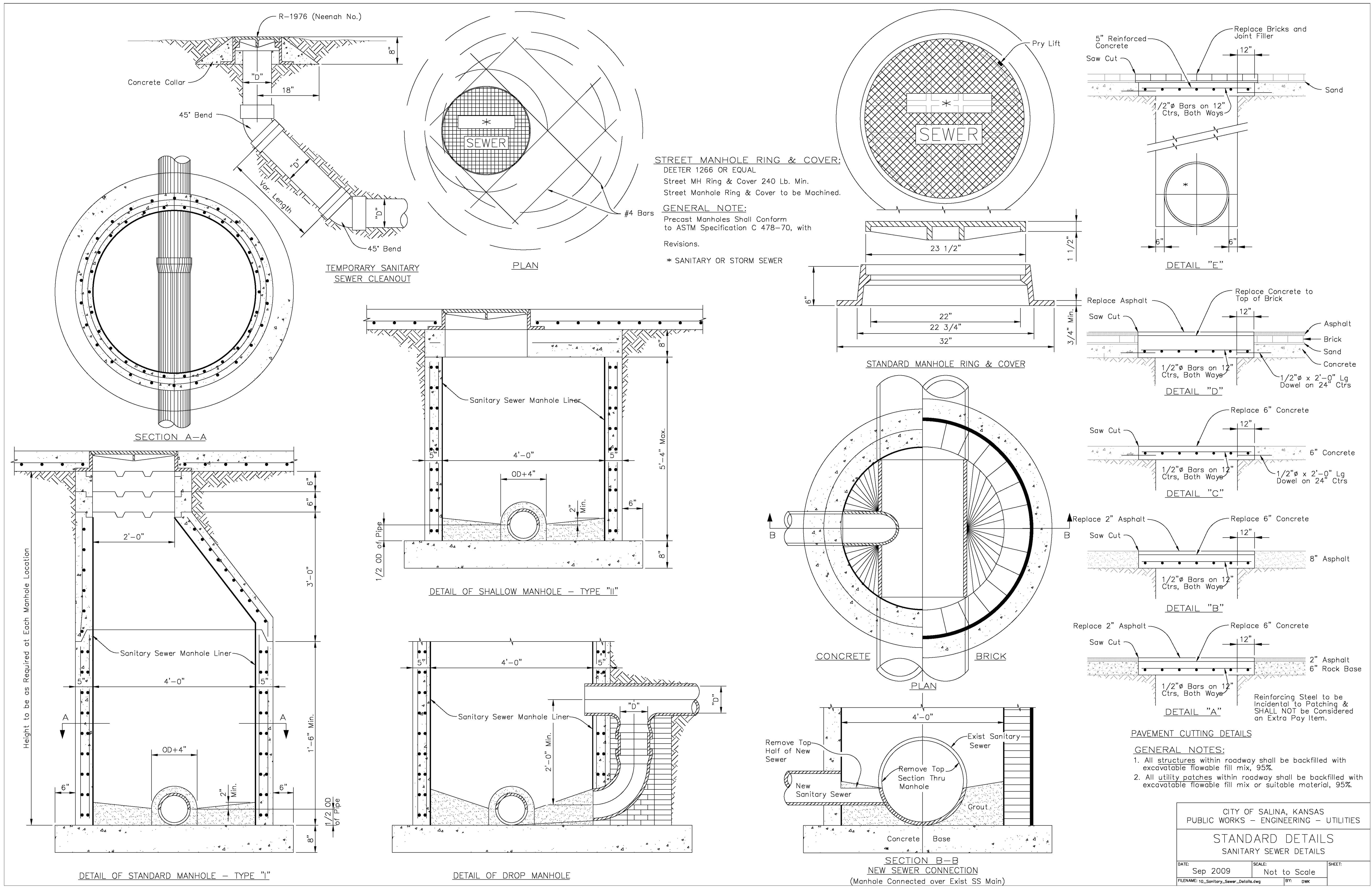
REV	DATE	DESCRIPTION
0	5-17-13	INITIAL ISSUE
1	8-27-13	UPDATED PER KOHE REVIEW COMMENT
2	3-12-14	AS-BUILT PLANS

MAGNOLIA HILLS ESTATES PHASE IV
MARKLEY ROAD & BROOKSTONE DRIVE
SALINA, KANSAS

SANITARY SEWER LINE "C" & "D" - PLAN & PROFILE

AS-BUILT

THIS DRAWING SHALL NOT BE UTILIZED BY ANY PERSON, FIRM, OR CORPORATION IN WHOLE OR IN PART WITHOUT THE SPECIFIC PERMISSION OF KAW VALLEY ENGINEERING, INC.



STREET MANHOLE RING & COVER:
 DEETER 1266 OR EQUAL
 Street MH Ring & Cover 240 Lb. Min.
 Street Manhole Ring & Cover to be Machined.

GENERAL NOTE:
 Precast Manholes Shall Conform to ASTM Specification C 478-70, with Revisions.
 * SANITARY OR STORM SEWER

SDM	SDM	SDM	SDM
JT	JT	JT	JT
AS-BUILT PLANS	AS-BUILT PLANS	AS-BUILT PLANS	AS-BUILT PLANS
INITIAL ISSUE	INITIAL ISSUE	INITIAL ISSUE	INITIAL ISSUE
REV	DATE	DESCRIPTION	CHK
1	3-12-14		SDM
0	5-17-13		SDM



SAMUEL D. MALINOWSKY
 ENGINEER
 KS # 12595

KAW VALLEY ENGINEERING, INC.
 CONSULTING ENGINEERS - LAND SURVEYORS
 2319 NORTH JACKSON | P.O. BOX 1304
 JUNCTION CITY, KANSAS 66441
 PH. (785) 762-5040 | FAX (785) 762-7744
 jke@kve.com | www.kve.com

JUNCTION CITY, KS | KANSAS CITY, MO | LENA, KS | SALINA, KS
 KAW VALLEY ENGINEERING, INC. IS AUTHORIZED TO PERFORM ENGINEERING SERVICES BY KANSAS STATE CERTIFICATE OF AUTHORIZATION # E-115.
 EXPIRES 12/31/14

MAGNOLIA HILLS ESTATES PHASE IV
 MARKLEY ROAD & BROOKSTONE DRIVE
 SALINA, KANSAS

CITY STANDARD DETAILS (SANITARY)

CITY OF SALINA, KANSAS PUBLIC WORKS - ENGINEERING - UTILITIES		
STANDARD DETAILS SANITARY SEWER DETAILS		
DATE: Sep 2009	SCALE: Not to Scale	SHEET:
FILENAME: 10_Sanitary_Sewer_Details.dwg	BY: DDK	

AS-BUILT

