

704

WEST DIAMOND DRIVE  
OCTOBER - 2008

TR BEG SW/C NE/4 TH N 1246.67 E 1268.07 S 1246.41 W 1268.23 TO POB LESS DRAINAGE & RW

See Quarter Section Map Book Page

27 22  
37 38

WEST DIAMON DRIVE

0+10, 17'

DIAMOND ADD  
BLOCK 1, Lot 1

LOYD ADD, BLOCK 1,  
W 141.85 LT 1

15' D/E  
15' D/E

LOYD ADD, LT 1 LESS W 141.85 BLK 1 LOYD ADD &  
W 70 LT 1 BLK 1 MALONEY ADD

MALONEY ADD, BLOCK 1, Lot 1 LESS W 70

MORTON ADD, BLOCK 1, PT LT 1  
BEG NW/C TH E 159.76 S 205.56  
W 159.83 N 205.39

MORTON ADD, BLOCK 1, LT 1  
LESS TR BEG NW/C TH E 159.76  
S 205.56 W 159.83 N 205.39

NOTE: All Sanitary Sewer mains are 8" unless noted otherwise.

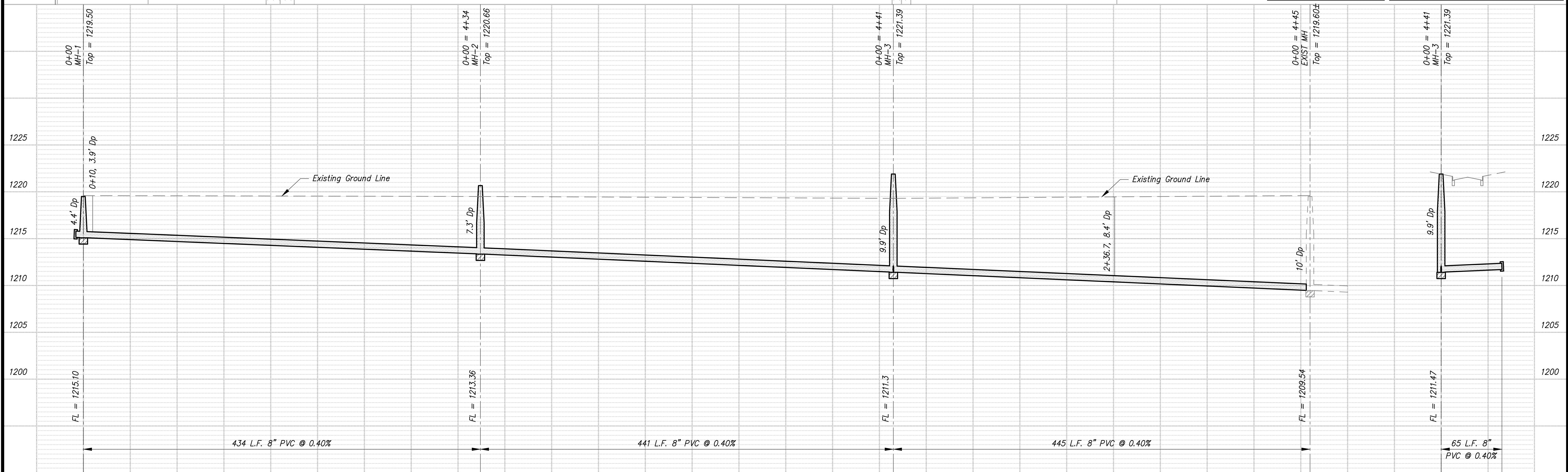
TBM: Station 10+00, 40' Rt; Spike in Power Pole NW Corner Sanborn Tract Elev = 1219.35

NOTE: Sanitary Sewer Service connection depths are from the Existing Ground Line at the time of construction.

NOTE: Distance from back of curb to property line is based on the street being built in the center of the right-of-way.

NOTE: All Streets are 33' back to back of curb. Right-of-Way is 80' unless noted otherwise.

SCALE  
PLAN: 1" = 50'  
Horiz & Vert  
PROFILE: 1" = 50'  
Horiz 1" = 50'  
Vert 1" = 5'



NO.	REVISIONS	DATE	BY

PROJECT TITLE:  
**Sanitary Sewer As-Built Drawing**

CONTRACTOR: Steven's  
SCALE: As Shown  
DESIGN:  
DRAWN:  
CHECKED:  
APPROVED:

CITY OF SALINA  
Dept. of Public Works  
Engineering Division  
300 WEST ASH SALINA, KANSAS 67401  
PH: 785.309.5725 FAX: 785.309.5713

DATE: July 2009  
FILENAME: 704asb.dwg  
PROJ. NO.: 06-1593  
SHEET: OF: