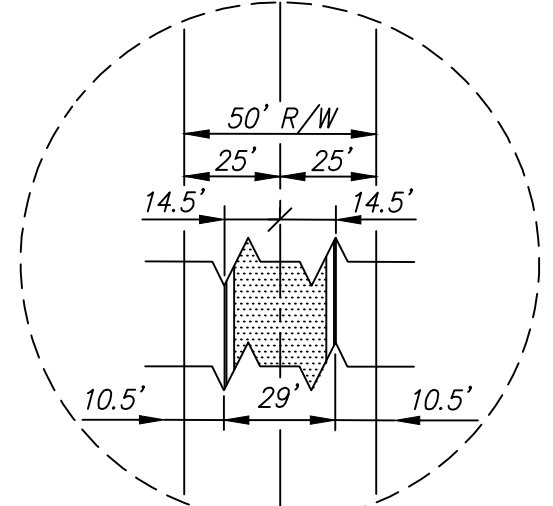


703

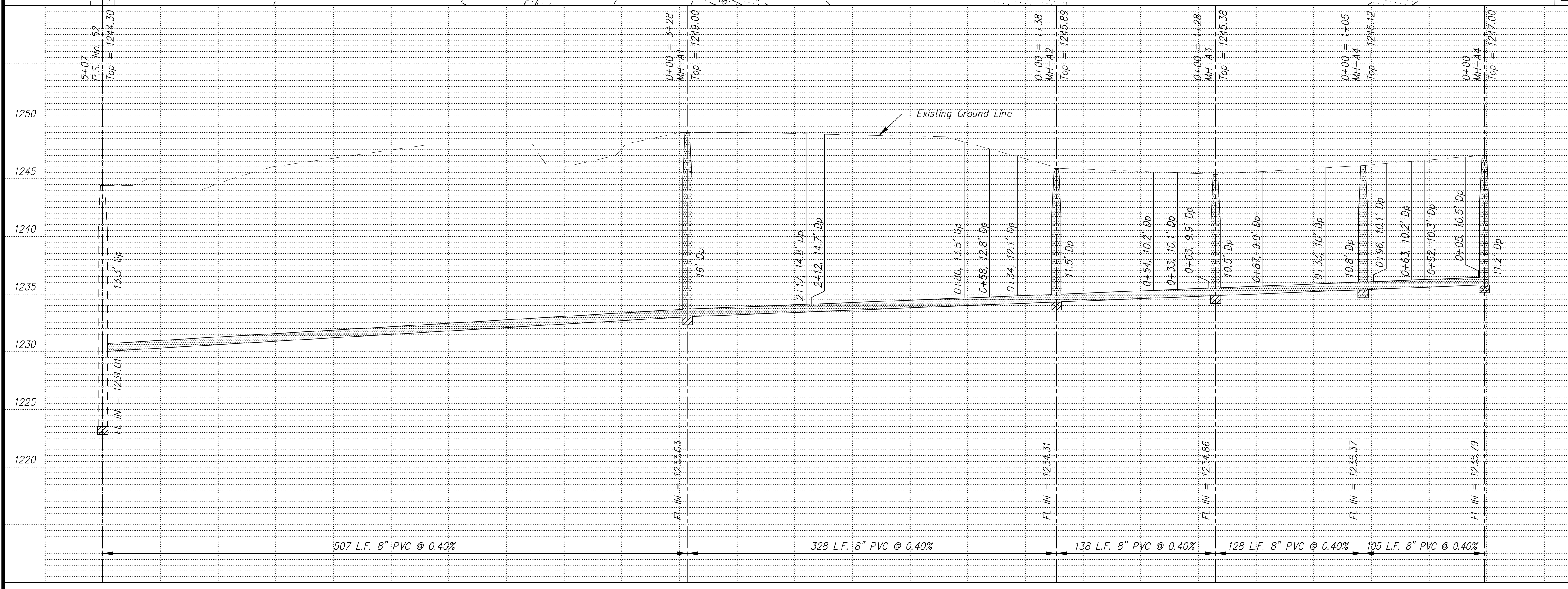
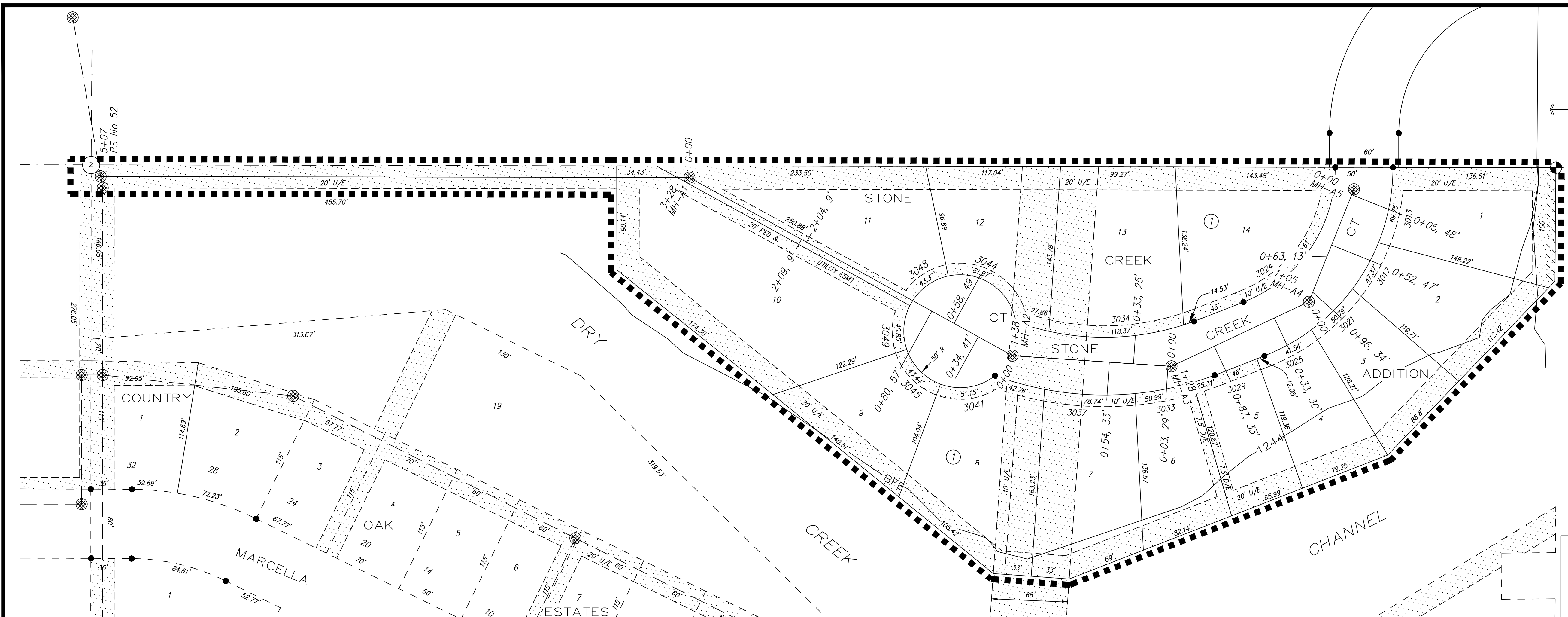
STONE CREEK ADDITION
JUNE - 2009

See Quarter Section Map Book Page



- NOTE: All Sanitary Sewer mains are 8" unless noted otherwise.
- VERTICAL CONTROL:
1/2" Rebar w/Landmark CLS 116" Cap,
Located at the Northwest Corner of Lot 1,
Stone Creek Addition Elev = 1248.08
- NOTE: Sanitary Sewer Service connection
depths are from the Existing Ground
Line at the time of construction.
- NOTE: Distance from back of curb to
property line is based on the street
being built in the center of the
right-of-way.
- NOTE: All Streets are 29' back of
curb. Right-of-Ways are 60' unless
noted otherwise.

SCALE
 PLAN: 1" = 50'
 Horiz & Vert
 PROFILE: 1" = 50'
 Horiz 1" = 50'
 Vert 1" = 5'



NO.	REVISIONS	DATE	BY

PROJECT TITLE
Sanitary Sewer As-Built Drawing

CONTRACTOR Steven's	DESIGN	CHECKED
SCALE As Shown	DRAWN	APPROVED

CITY OF SALINA Dept. of Public Works Engineering Division 300 WEST ASH SALINA, KANSAS 67401 PH: 785.309.5725 FAX: 785.309.5713	DATE July 2009	PROJ. NO. 08-2714
	FILENAME 703asb.dwg	SHEET: OF