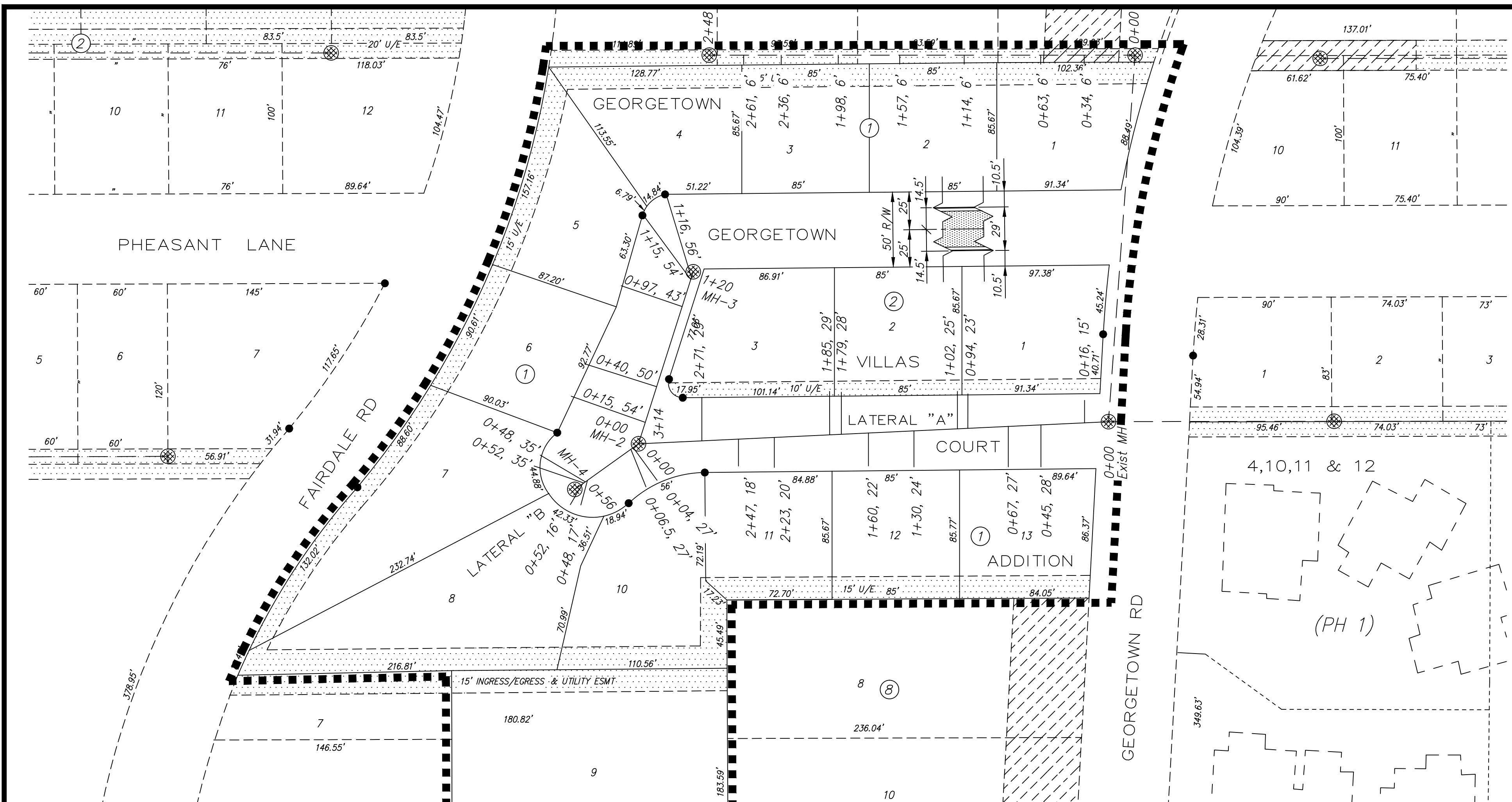


702
GEORGETOWN VILLAS
ADDITION
MAY - 2009



NOTE: All Sanitary Sewer mains are 8" unless noted otherwise.

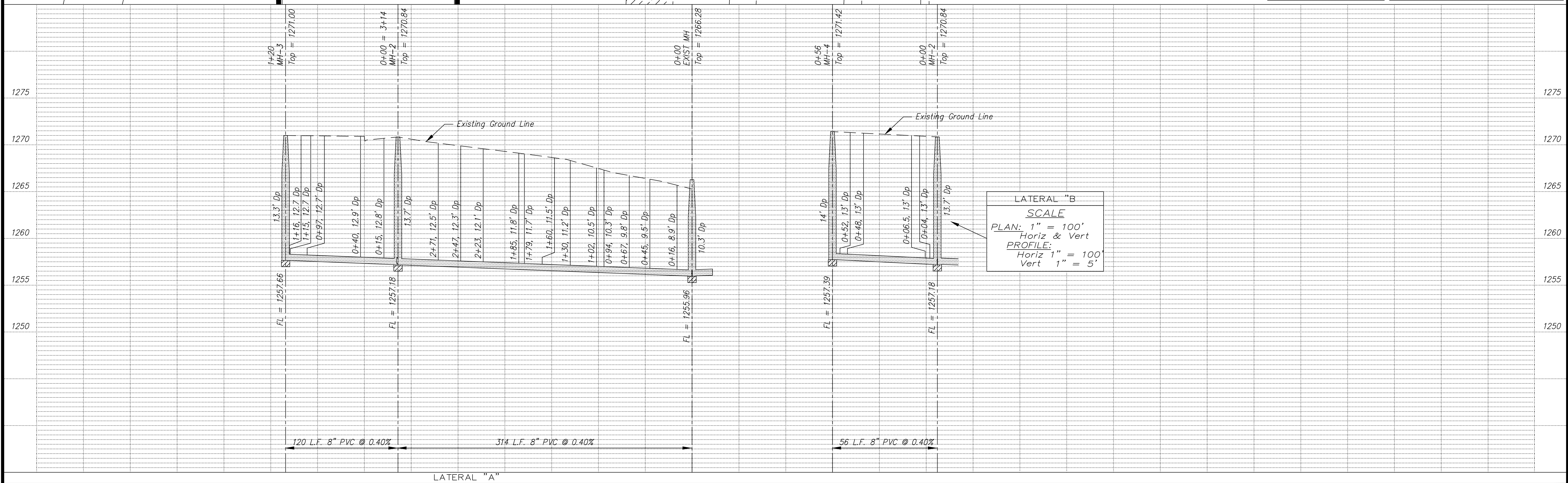
VERTICAL CONTROL
 USGS brass disk stamped Y279-1947, located on South Side of Crawford 50'+ Northeast of the Northeast Corner of the Municipal Golf Course maintenance shop
 Elevation=1267.53

NOTE: Sanitary Sewer Service connection depths are from the Existing Ground Line at the time of construction.

NOTE: Distance from back of curb to property line is based on the street being built in the center of the right-of-way.

NOTE: All Streets are 29' back to back of curb. Right-of-Ways are 60' unless noted otherwise.

SCALE
 PLAN: 1" = 50'
 Horiz & Vert
 PROFILE: 1" = 50'
 Horiz 1" = 50'
 Vert 1" = 5'



LATERAL "B"
SCALE
 PLAN: 1" = 100'
 Horiz & Vert
 PROFILE: 1" = 100'
 Horiz 1" = 100'
 Vert 1" = 5'

Sanitary Sewer As-Built Drawing

NO.	REVISIONS	DATE	BY	NO.	REVISIONS	DATE	BY

PROJECT TITLE	Sanitary Sewer As-Built Drawing		
CONTRACTOR	J & K	DESIGN	
SCALE	As Shown	DRAWN	
CHECKED		APPROVED	

CITY OF SALINA Dept. of Public Works Engineering Division 300 WEST ASH SALINA, KANSAS 67401 PH: 785.309.5725 FAX: 785.309.5713	DATE	June 2009	PROJ. NO.	Private
	FILENAME	702asb.dwg	SHEET:	OF: