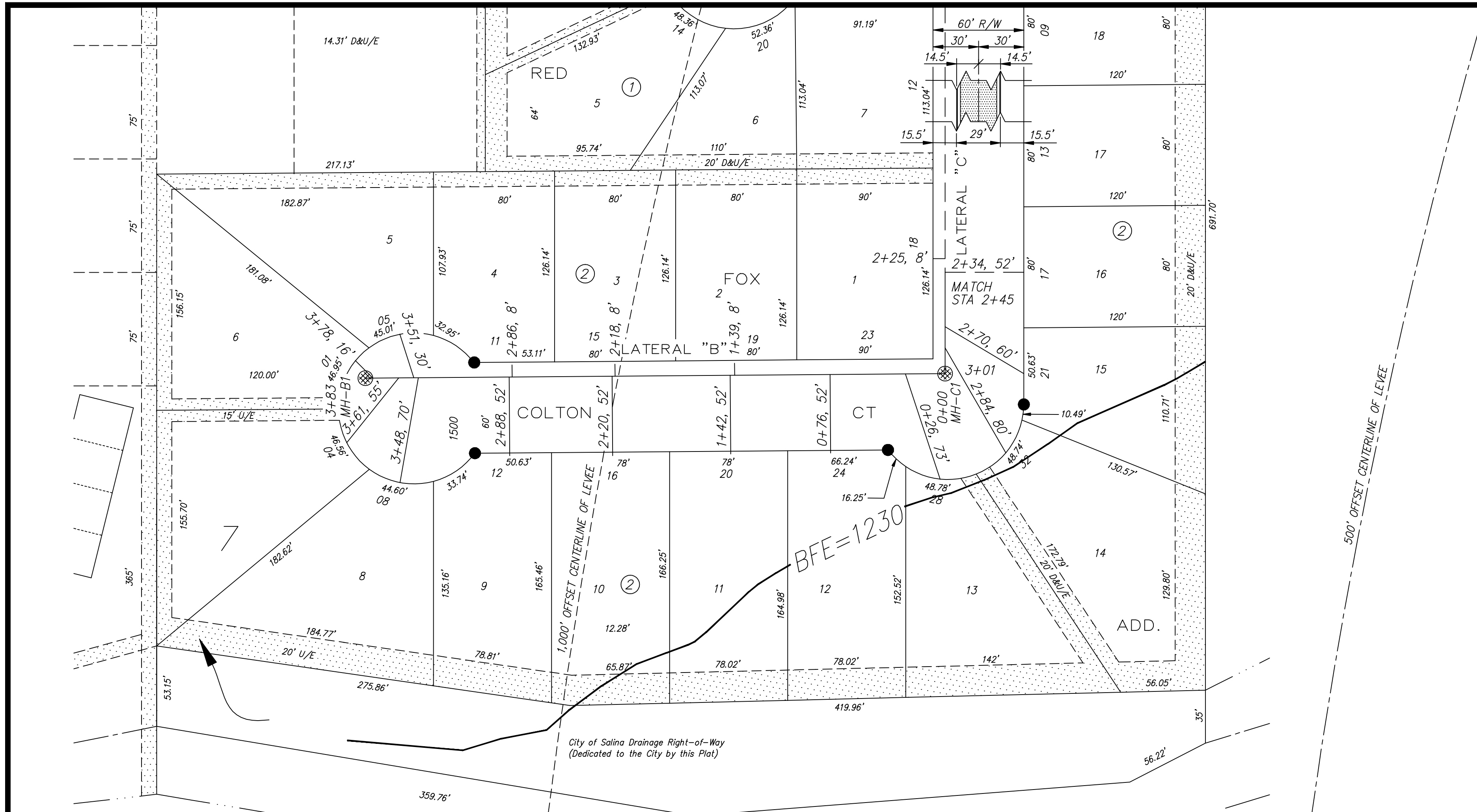


699
RED FOX ADDITION
APRIL - 2008



NOTE: All Sanitary Sewer mains are 8" unless noted otherwise.

HORIZONTAL CONTROL:
 1/2" rebar w/"Landmark CLS 116" cap, Set in Concrete)
 N = 1002.25, E = 817.51, Elev = 1229.45

NOTE: Sanitary Sewer Service connection depths are from the Existing Ground Line at the time of construction.

NOTE: Distance from back of curb to property line is based on the street being built in the center of the right-of-way.

NOTE: All Streets are 29' back to back of curb. Right-of-Ways are 60' unless noted otherwise.

SCALE
 PLAN: 1" = 50'
 Horiz & Vert
 PROFILE: 1" = 50'
 Horiz 1" = 50'
 Vert 1" = 5'



NO.	REVISIONS	DATE	BY

PROJECT TITLE:
Sanitary Sewer As-Built Drawing

CONTRACTOR:	DESIGN:	CHECKED:
SCALE: As Shown	DRAWN:	APPROVED:

CITY OF SALINA Dept. of Public Works Engineering Division 300 WEST ASH SALINA, KANSAS 67401 PH: 785.309.5725 FAX: 785.309.5713	DATE: Dec 2008	PROJ. NO.: 07-2664
	FILENAME: 699asb.dwg	SHEET: OF: