

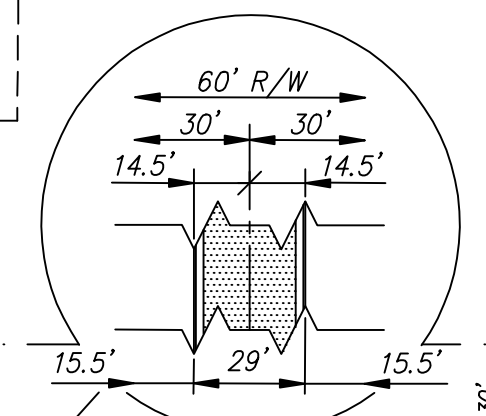
698

RED FOX ADDITION  
APRIL - 2008

See Quarter Section Map Book Page

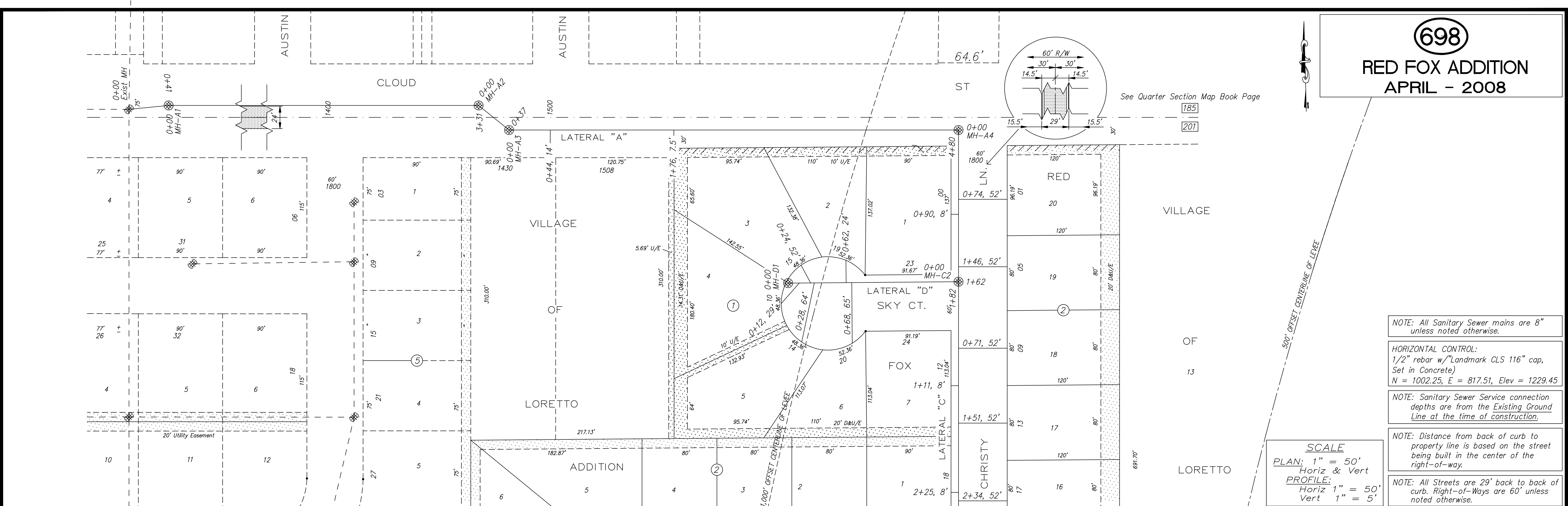
185

201



- NOTE: All Sanitary Sewer mains are 8" unless noted otherwise.
- HORIZONTAL CONTROL: 1/2" rebar w/ Landmark CLS 116" cap, Set in Concrete) N = 1002.25, E = 817.51, Elev = 1229.45
- NOTE: Sanitary Sewer Service connection depths are from the Existing Ground Line at the time of construction.
- NOTE: Distance from back of curb to property line is based on the street being built in the center of the right-of-way.
- NOTE: All Streets are 29' back to back of curb. Right-of-Ways are 60' unless noted otherwise.

SCALE  
 PLAN: 1" = 50'  
 Horiz & Vert  
 PROFILE: 1" = 50'  
 Horiz 1" = 50'  
 Vert 1" = 5'



NO.	REVISIONS	DATE	BY

PROJECT TITLE  
**Sanitary Sewer As-Built Drawing**

CONTRACTOR	DESIGN	CHECKED
SCALE As Shown	DRAWN	APPROVED

CITY OF SALINA Dept. of Public Works Engineering Division 300 WEST ASH PH: 785.309.5725	DATE Dec 2008	PROJ. NO. 07-2664
	FILENAME 697asb.dwg	SHEET OF