

697
QUAIL MEADOWS ESTATES
ADDITION
DECEMBER - 2007

See Quarter Section Map Book Page **248**

NOTE: All Sanitary Sewer mains are 8" unless noted otherwise.

CBM No. 265: U.S.G.S. brass disk in conc stamped "C-292-1952", 29' west of west rail & 40' north of Schilling Rd.
 Elev = 1245.22

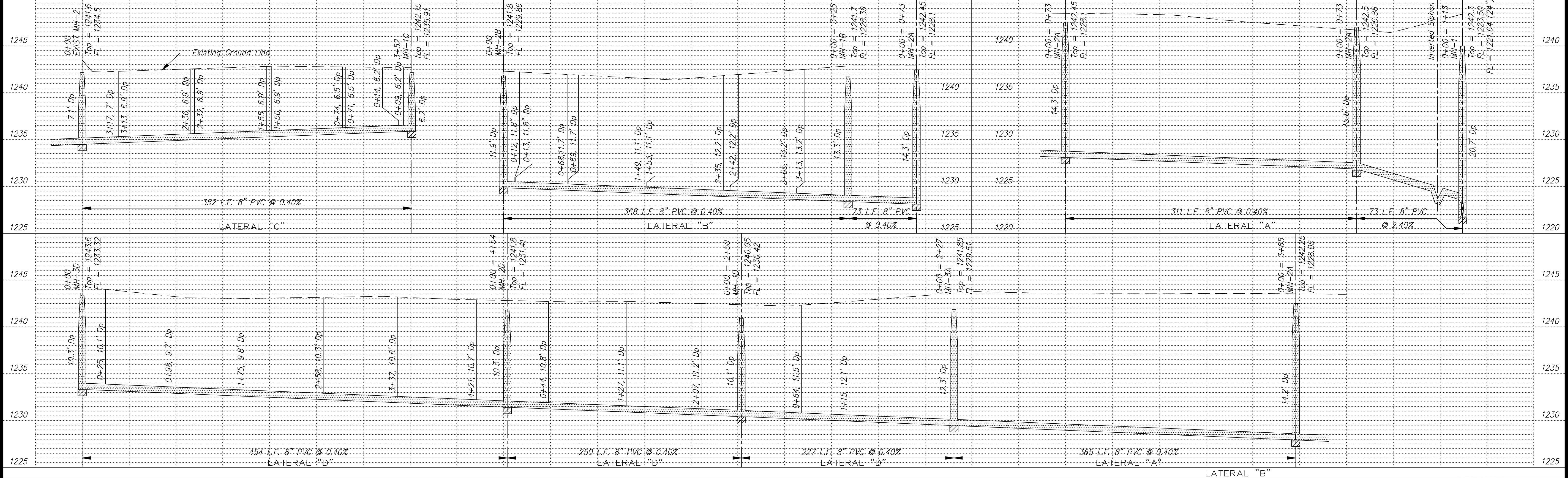
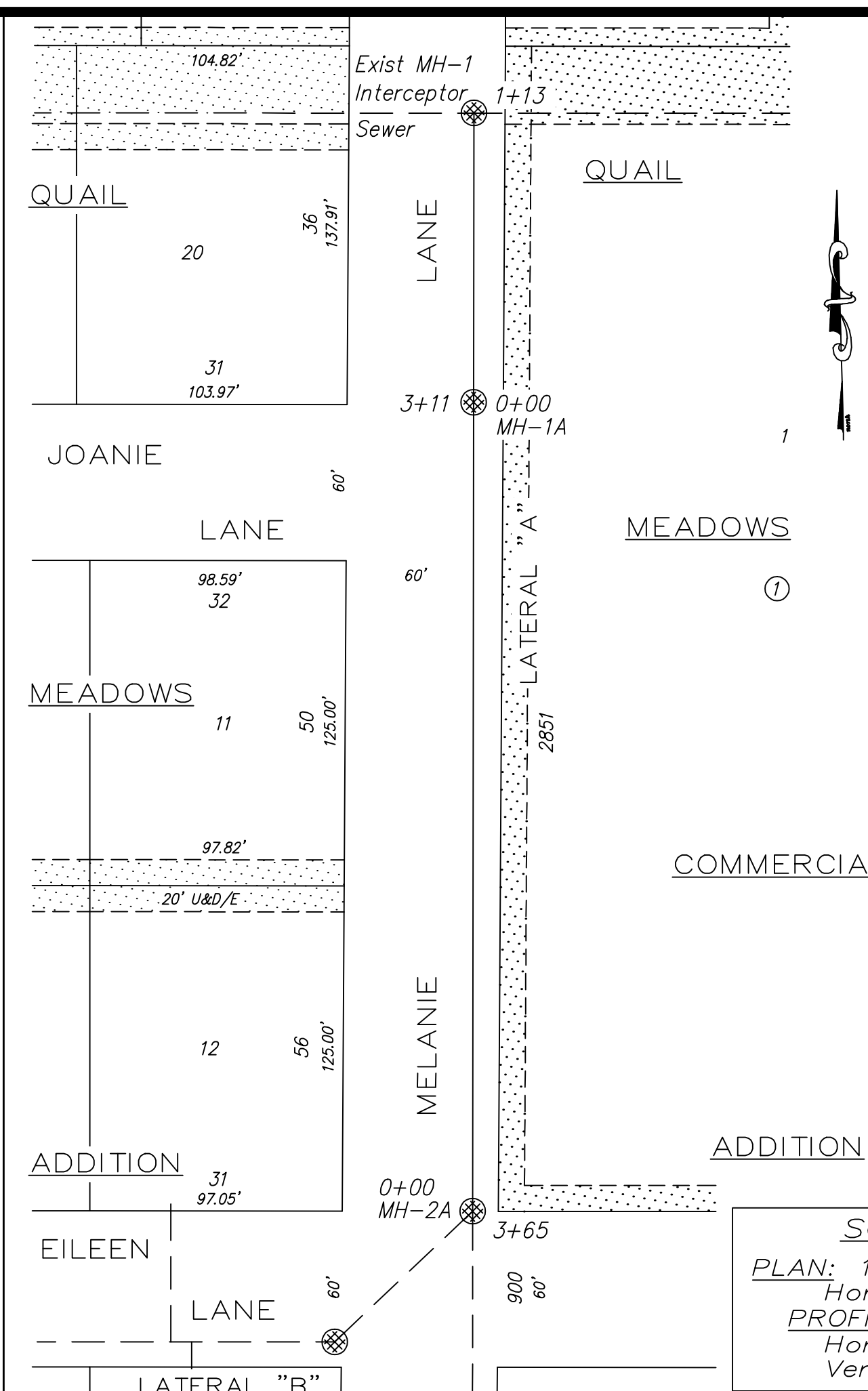
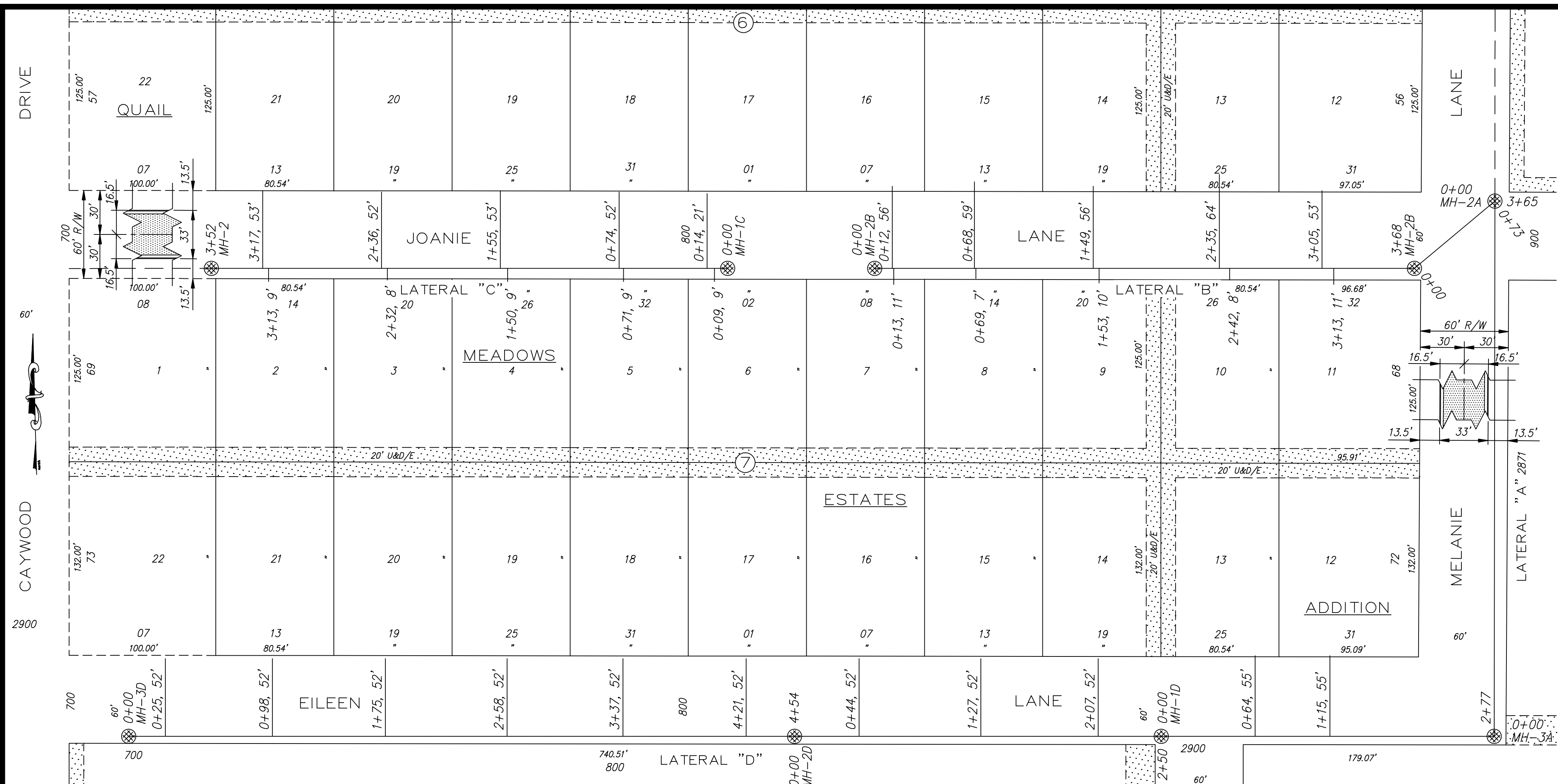
NOTE: Sanitary Sewer Service on risers to within 10' or less of finished grade

NOTE: Sanitary Sewer Service connection depths are from the Existing Ground Line at the time of construction.

NOTE: Distance from back of curb to property line is based on the street being built in the center of the right-of-way.

NOTE: All Streets are 33' back to back of curb. Right-of-Ways are 60' unless noted otherwise.

SCALE
 PLAN: 1" = 50'
 Horiz & Vert
 PROFILE: 1" = 50'
 Vert 1" = 5'



| NO. | REVISIONS | DATE | BY |
|-----|-----------|------|----|
| | | | |

PROJECT TITLE:
Sanitary Sewer As-Built Drawing

| | | |
|-------------|---------|-----------|
| CONTRACTOR: | DESIGN: | CHECKED: |
| SCALE: | DRAWN: | APPROVED: |

| | | | |
|--|--|----------------------|--------------------|
| CITY OF SALINA Dept. of Public Works Engineering Division | | DATE: Dec 2008 | PROJ. NO.: 07-2664 |
| 300 WEST ASH PH: 785.309.5725 | | FILENAME: 697asb.dwg | SHEET: OF |