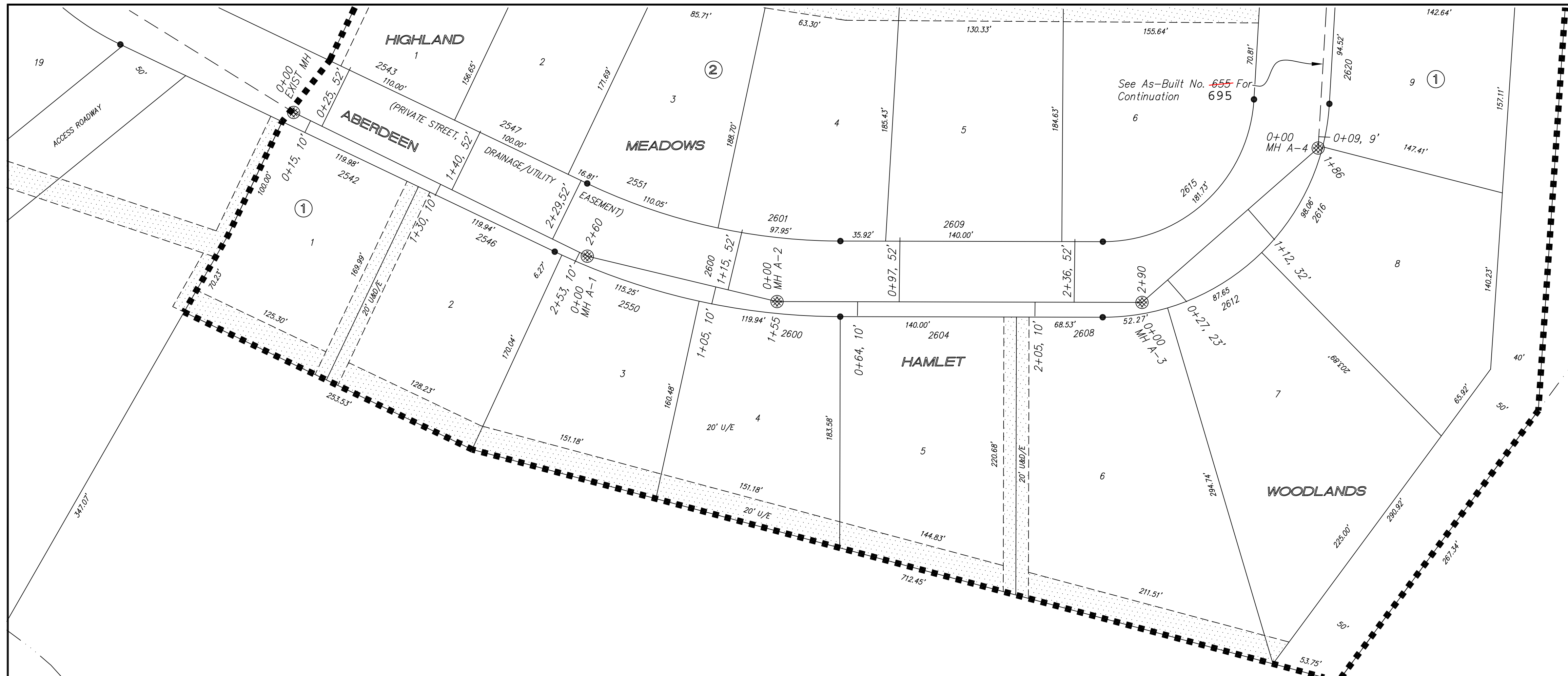


696

HIGHLAND MEADOWS HAMLET WOODLANDS ADDITION DECEMBER - 2005



See Quarter Section Map Book Page
235 236

NOTE: All Sanitary Sewer mains are 8" unless noted otherwise.

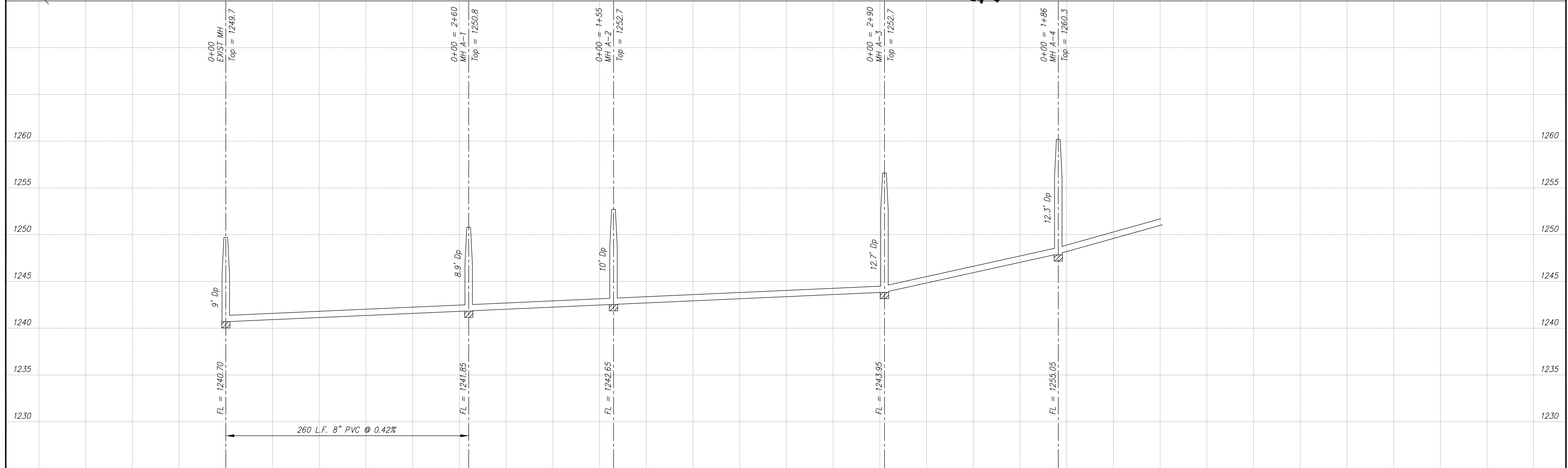
VERTICAL CONTROL: square chiseled in concrete curb (top) @ East end of curb return @ the NE quadrant of Eaglecrest and Redhawk Elev = 1232.48

NOTE: Sanitary Sewer Service connection depths are from the Existing Ground Line at the time of construction.

NOTE: Distance from back of curb to property line is based on the street being built in the center of the right-of-way.

NOTE: All Streets are 29' back to back of curb. Right-of-Ways are 60' unless noted otherwise.

SCALE
 PLAN: 1" = 50'
 Horiz & Vert
 PROFILE: 1" = 50'
 Horiz 1" = 50'
 Vert 1" = 5'



NO.	REVISIONS	DATE	BY

PROJECT TITLE:
Sanitary Sewer As-Built Drawing

CONTRACTOR:	DESIGN:	CHECKED:
SCALE:	DRAWN:	APPROVED:
As Shown		

CITY OF SALINA Dept. of Public Works Engineering Division		DATE:	PROJ. NO.:
300 WEST ASH SALINA, KANSAS 67401 PH: 785.309.5725 FAX: 785.309.5713		April 2008	PRIVATE
FILENAME:	SHEET:	OP:	
694asb.dwg			