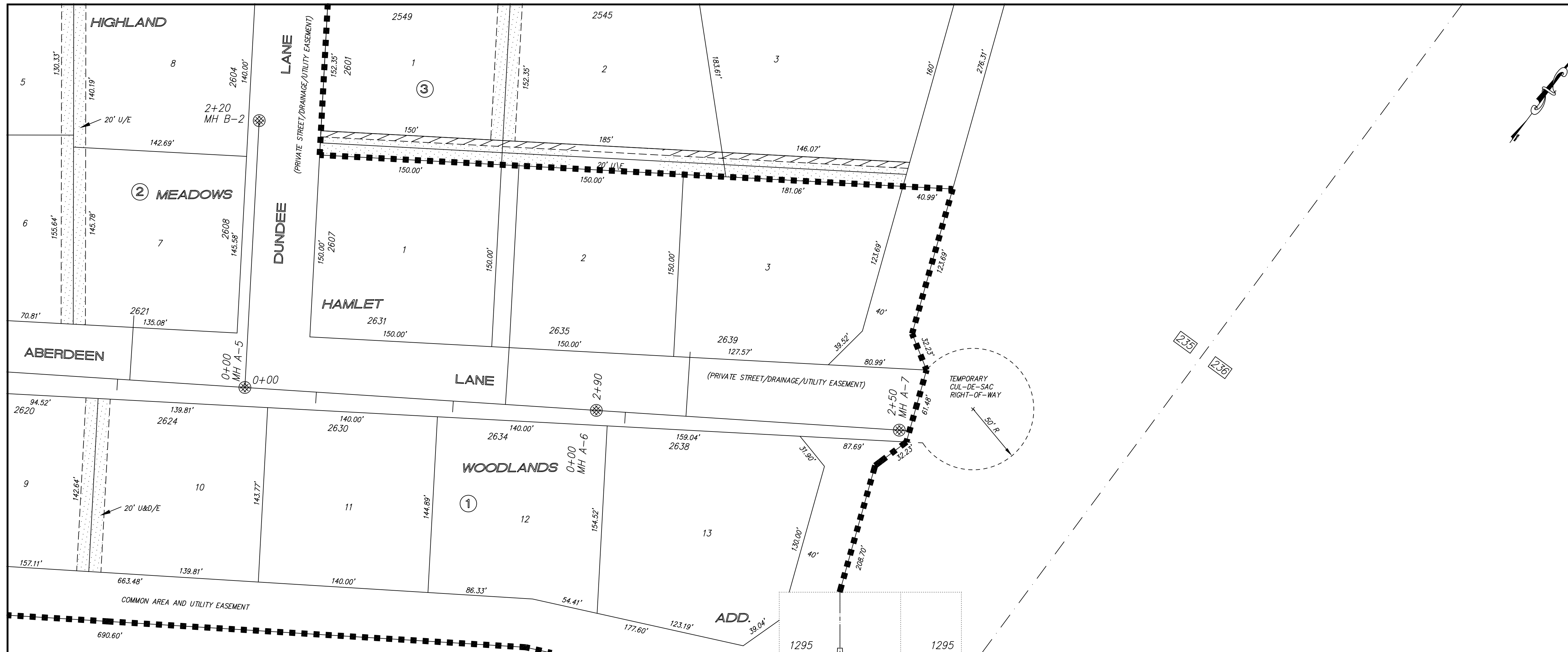


695

HIGHLAND MEADOWS HAMLET  
WOODLANDS ADDITION  
NOVEMBER - 2007



NOTE: All Sanitary Sewer mains are 8" unless noted otherwise.

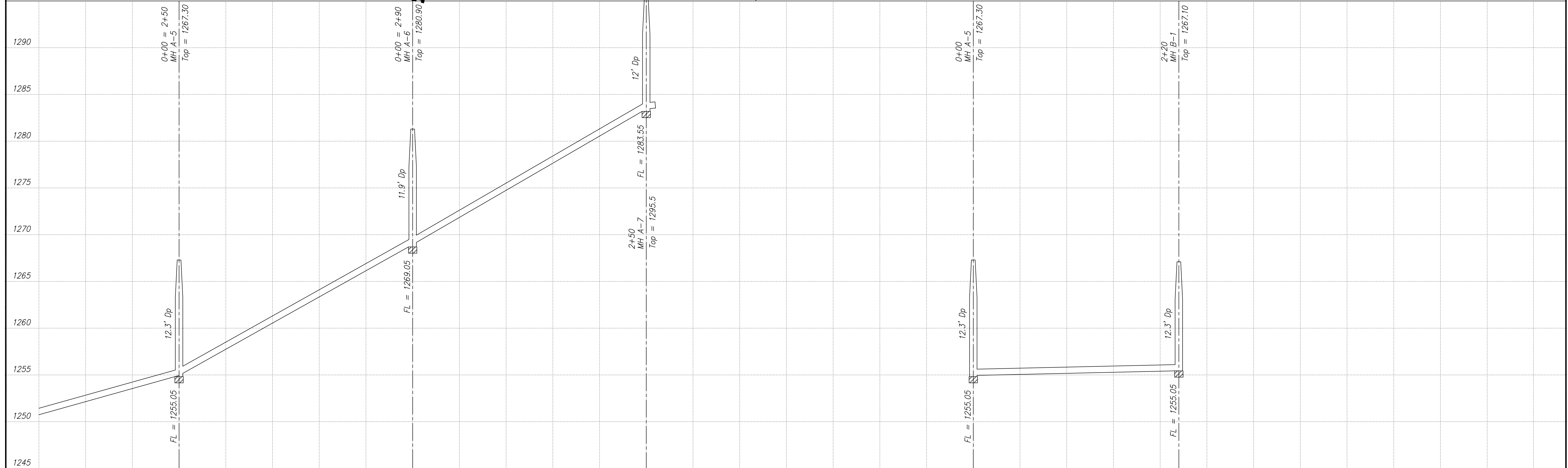
VERTICAL CONTROL: square chiseled in concrete curb (top) @ East end of curb return @ the NE quadrant of Eaglecrest and Redhawk Elev = 1232.48

NOTE: Sanitary Sewer Service connection depths are from the Existing Ground Line at the time of construction.

NOTE: Distance from back of curb to property line is based on the street being built in the center of the right-of-way.

NOTE: All Streets are 29' back to back of curb. Right-of-Ways are 60' unless noted otherwise.

SCALE  
PLAN: 1" = 50'  
Horiz & Vert  
PROFILE: 1" = 50'  
Horiz 1" = 50'  
Vert 1" = 5'



NO.	REVISIONS	DATE	BY

PROJECT TITLE:  
**Sanitary Sewer As-Built Drawing**

CONTRACTOR:	DESIGN:	CHECKED:
SCALE: As Shown	DRAWN:	APPROVED:

**CITY OF SALINA**  
Dept. of Public Works  
Engineering Division  
300 WEST ASH SALINA, KANSAS 67401  
PH: 785.309.5725 FAX: 785.309.5713

DATE: April 2008  
FILENAME: 694asb.dwg  
PROJ. NO.: PRIVATE  
SHEET: OF: