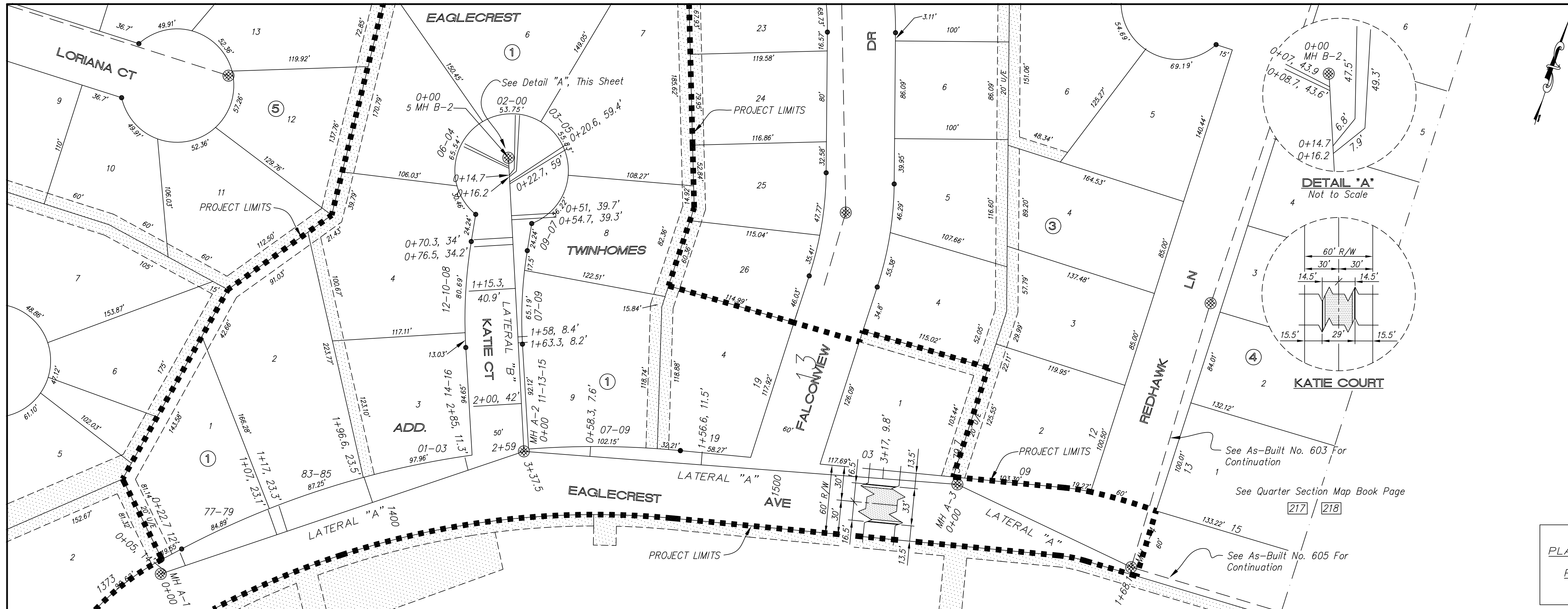


694
EAGLECREST TWINHOMES
ADDITION
NOVEMBER - 2007



NOTE: All Sanitary Sewer mains are 8" unless noted otherwise.

VERTICAL CONTROL: square chiseled in concrete curb (top) @ East end of curb return @ the NE quadrant of Eaglecrest and Redhawk Elev = 1232.48

NOTE: Sanitary Sewer Service connection depths are from the Existing Ground Line at the time of construction.

NOTE: Distance from back of curb to property line is based on the street being built in the center of the right-of-way.

NOTE: All Streets are 29' back to back of curb. Right-of-Ways are 60' unless noted otherwise.

SCALE
 PLAN: 1" = 50'
 Horiz & Vert
 PROFILE: 1" = 50'
 Horiz 1" = 50'
 Vert 1" = 5'



NO.	REVISIONS	DATE	BY

PROJECT TITLE
Sanitary Sewer As-Built Drawing

CONTRACTOR Steven's Contractors	DESIGN 	CHECKED 	CITY OF SALINA Dept. of Public Works Engineering Division	DATE April 2008	PROJ. NO. 07-2662
SCALE As Shown	DRAWN 	APPROVED 		FILENAME 694asb.dwg	SHEET OF