

693
LIBERT ADDITION NO. 2
ADDITION - PHASE 1
OCTOBER - 2006

BM No. 1: USGS brass disc in concrete stamped "C-292-1952", located west of the west rail of the Union Pacific Railroad and 40'± north of Schilling Road (City Benchmark #265)
 Elev = 1245.22

BM No. 2: Chiseled square on top, center of concrete headwall of RCP w/flap gate at west end of drainage ditch on south side of Schilling Road.
 Elev = 1243.07

BM No. 3: Chiseled square on top of curb of the south end of return on the west side of the west entrance road off the south side of Schilling Road.
 Elev = 1247.02

BM No. 4: Chiseled square on top, center of concrete headway on the west end of a 6'x6' RCB under the east entrance road off the south side of Schilling Road.
 Elev = 1242.51

NOTE: All Sanitary Sewer mains are 12" unless noted otherwise.

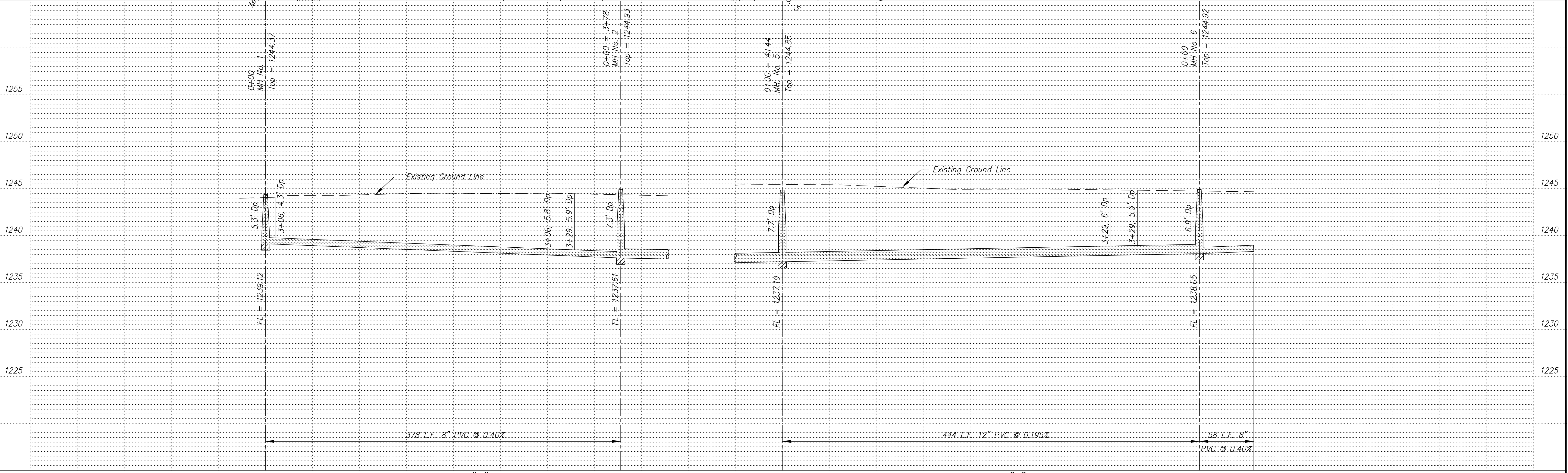
NOTE: Sanitary Sewer Service connection depths are from the Existing Ground Line at the time of construction.

NOTE: Distance from back of curb to property line is based on the street being built in the center of the right-of-way.

NOTE: All Streets are 29' back to back of curb. Right-of-Ways are 60' unless noted otherwise.

SCALE
 PLAN: 1" = 50'
 Horiz & Vert
 PROFILE: 1" = 50'
 Horiz 1" = 50'
 Vert 1" = 5'

See Quarter Section Map Book Page 264



| | | | | | | | | | | | | | | | | | |
|---------------------------------|--|--|--|--|--|-----------------------|--|----------|--|----------|--|---|--|------------|--|-----------|--|
| PROJECT TITLE | | | | | | CONTRACTOR | | DESIGN | | CHECKED | | CITY OF SALINA Dept. of Public Works Engineering Division | | DATE | | PROJ. NO. | |
| Sanitary Sewer As-Built Drawing | | | | | | As Shown | | DRAWN | | APPROVED | | 300 WEST ASH SALINA, KANSAS 67401 PH: 785.309.5725 | | Jan 2008 | | 07-1607 | |
| NO. REVISIONS DATE BY | | | | | | NO. REVISIONS DATE BY | | FILENAME | | SHEET | | OF | | 693asb.dwg | | OF | |