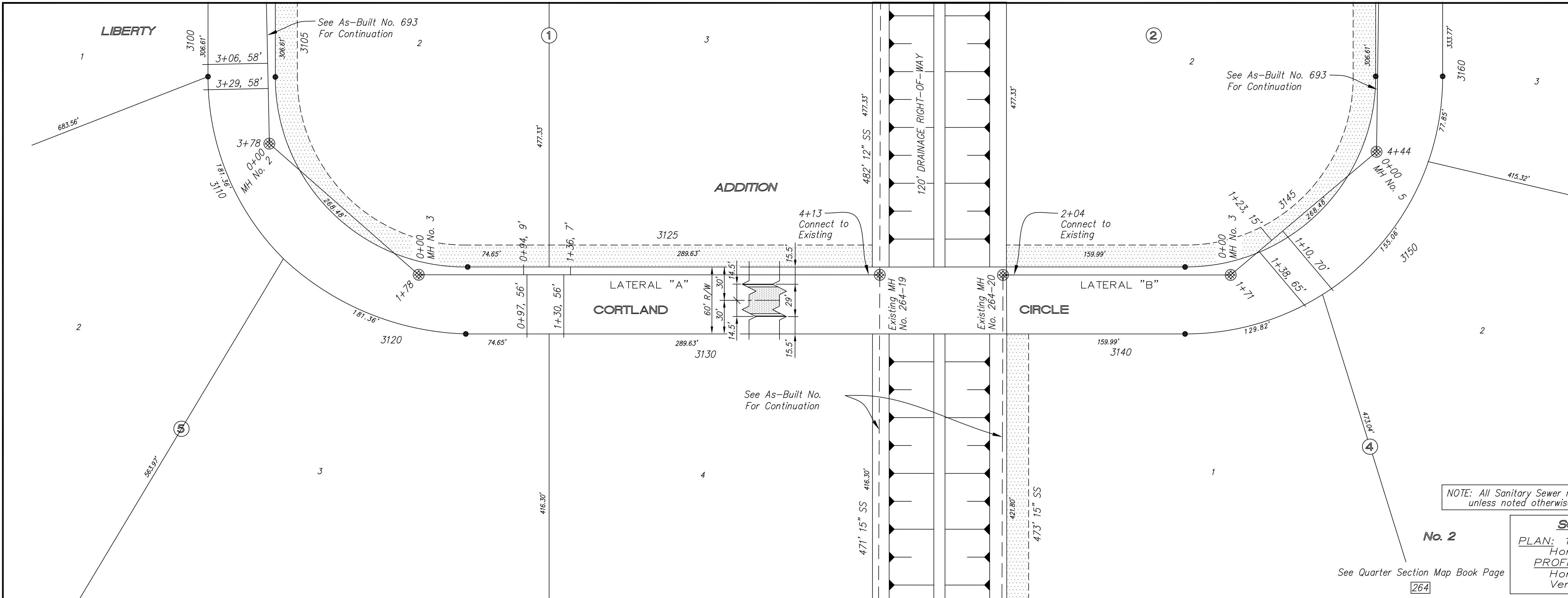


**692**  
**LIBERT ADDITION NO. 2**  
**ADDITION - PHASE 1**  
**OCTOBER - 2006**



BM No. 1: USGS brass disc in concrete stamped "C-292-1952", located west of the west rail of the Union Pacific Railroad and 40'± north of Schilling Road (City Benchmark #265)  
 Elev = 1245.22

BM No. 2: Chiseled square on top, center of concrete headwall of RCP w/flap gate at west end of drainage ditch on south side of Schilling Road.  
 Elev = 1243.07

BM No. 3: Chiseled square on top of curb of the south end of return on the west side of the west entrance road off the south side of Schilling Road.  
 Elev = 1247.02

BM No. 4: Chiseled square on top, center of concrete headway on the west end of a 6'x6' RCB under the east entrance road off the south side of Schilling Road.  
 Elev = 1242.51

NOTE: Sanitary Sewer Service connection depths are from the Existing Ground Line at the time of construction.

NOTE: Distance from back of curb to property line is based on the street being built in the center of the right-of-way.

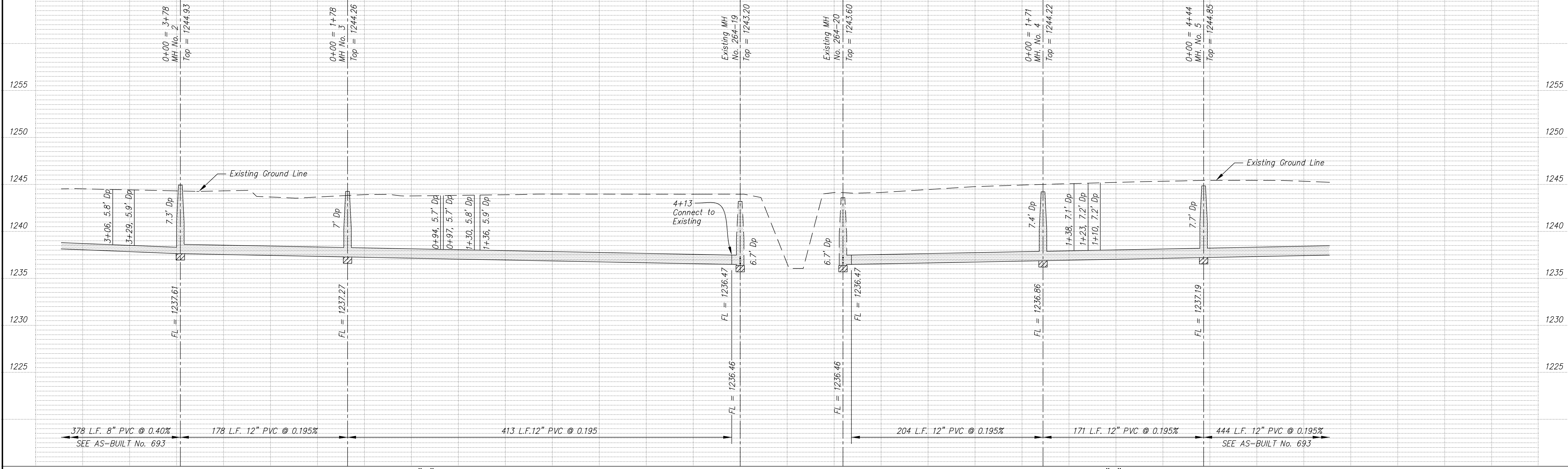
NOTE: All Streets are 29' back to back of curb. Right-of-Ways are 60' unless noted otherwise.

NOTE: All Sanitary Sewer mains are 8" unless noted otherwise.

**SCALE**  
 PLAN: 1" = 50'  
 Horiz & Vert  
 PROFILE: 1" = 50'  
 Horiz 1" = 50'  
 Vert 1" = 5'

No. 2

See Quarter Section Map Book Page 264



NO.	REVISIONS	DATE	BY

PROJECT TITLE:  
**Sanitary Sewer As-Built Drawing**

CONTRACTOR:	DESIGN:	CHECKED:
SCALE:	DRAWN:	APPROVED:

<b>CITY OF SALINA</b> Dept. of Public Works Engineering Division 300 WEST ASH SALINA, KANSAS 67401 PH: 785.309.5725 FAX: 785.309.5713	DATE:	PROJ. NO.:
	Jan 2008 07-1607	SHEET: OF: