

691
MAGNOLIA HILLS ESTATES
ADDITION - PHASE 2
MAY - 2007

See As-Built No. 673 & 674
 For Continuation

NOTE: All services are 8' to 11" deep at end of stub-out (from exist ground line)

NOTE: Sanitary Sewer Service connection depths are from the Existing Ground Line at the time of construction.

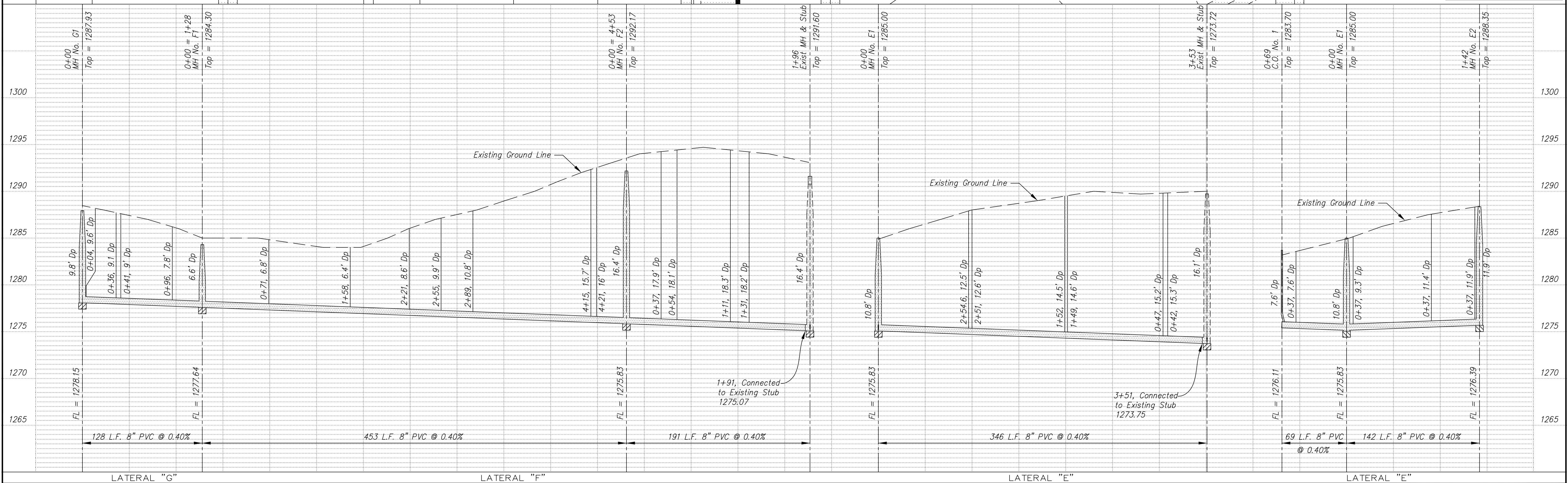
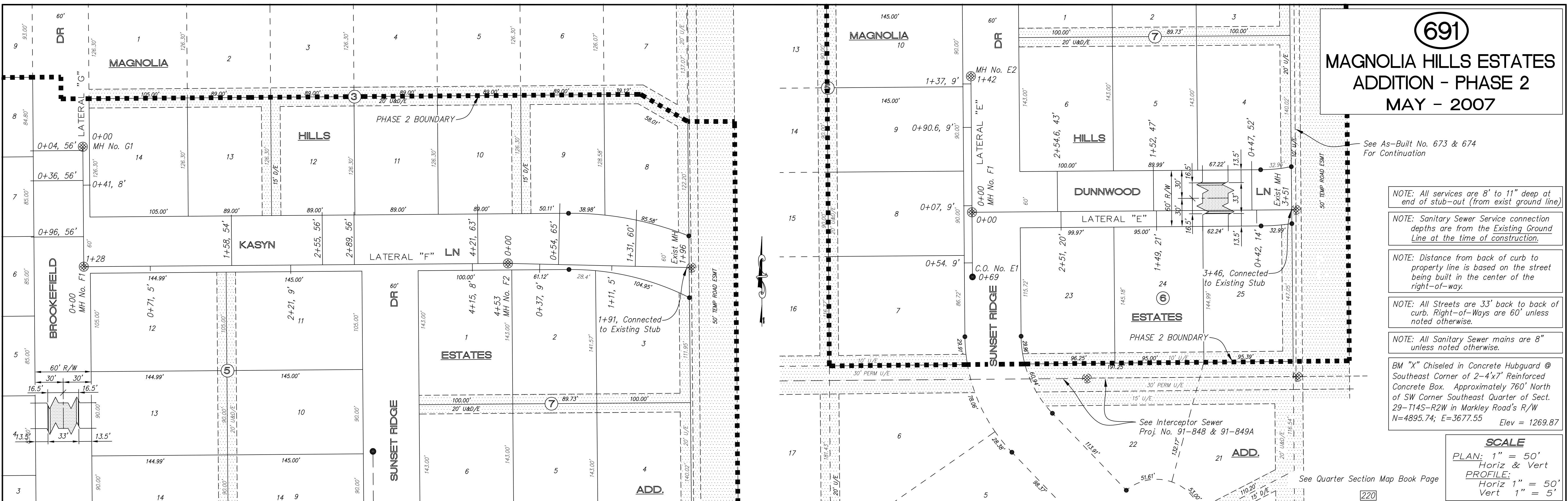
NOTE: Distance from back of curb to property line is based on the street being built in the center of the right-of-way.

NOTE: All Streets are 33' back to back of curb. Right-of-Ways are 60' unless noted otherwise.

NOTE: All Sanitary Sewer mains are 8" unless noted otherwise.

BM "X" Chiseled in Concrete Hubguard @ Southeast Corner of 2-4x7' Reinforced Concrete Box. Approximately 760' North of SW Corner Southeast Quarter of Sect. 29-114S-R2W in Markley Road's R/W N=4895.74; E=3677.55 Elev = 1269.87

SCALE
 PLAN: 1" = 50'
 Horiz & Vert
 PROFILE: 1" = 50'
 Horiz 1" = 50'
 Vert 1" = 5'



PROJECT TITLE						CONTRACTOR		DESIGN		CHECKED		CITY OF SALINA Dept. of Public Works Engineering Division		DATE		PROJ. NO.	
Sanitary Sewer As-Built Drawing						As Shown		DRAWN		APPROVED		300 WEST ASH PH: 785.309.5725		Jan 2008		07-2643	
NO. REVISIONS												FILENAME		SHEET			
DATE BY												691osb.dwg		OF			