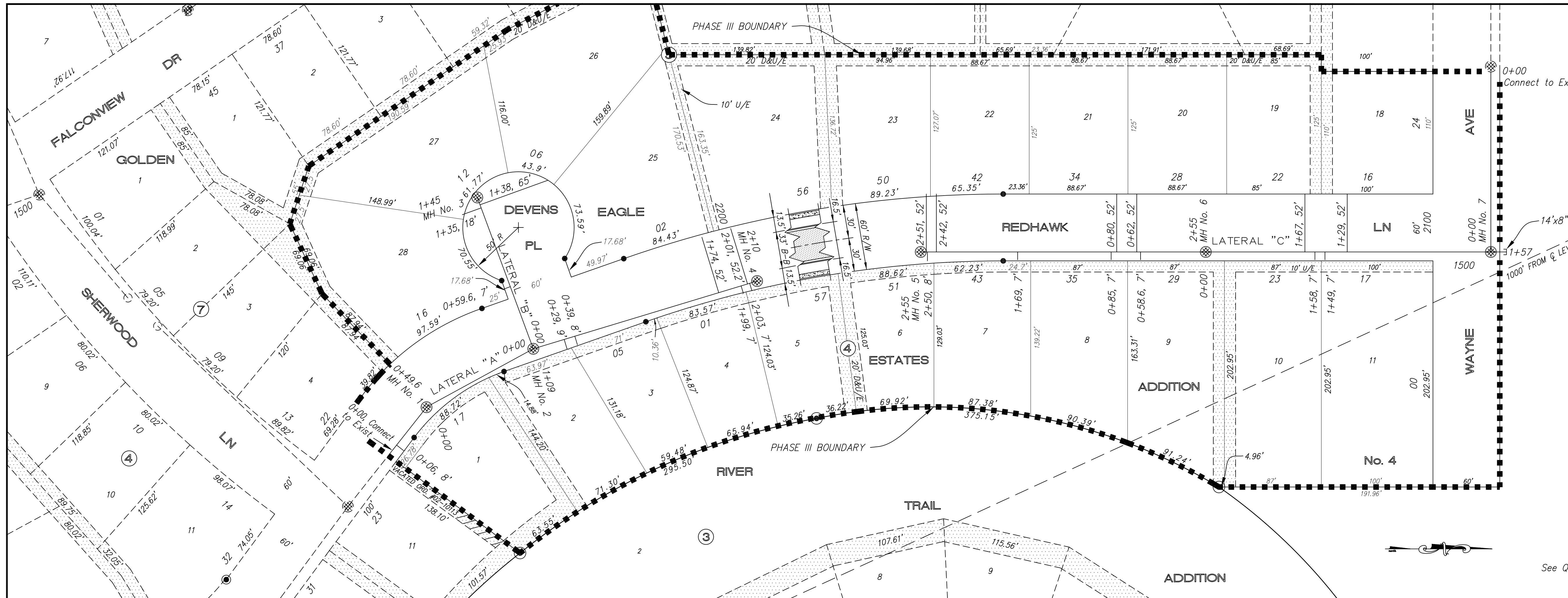


690

GOLDEN EAGLE ESTATES ADDITION No. 4 - PHASE III January 2007



NOTE: Sanitary Sewer Service connection depths are from the Existing Ground Line at the time of construction.

NOTE: Distance from back of curb to property line is based on the street being built in the center of the right-of-way.

NOTE: All Streets are 33' back to back of curb. Right-of-Ways are 60' unless noted otherwise.

NOTE: All Sanitary Sewer Services are 4" unless noted otherwise.

NOTE: All Sanitary Sewer mains are 8" unless noted otherwise.

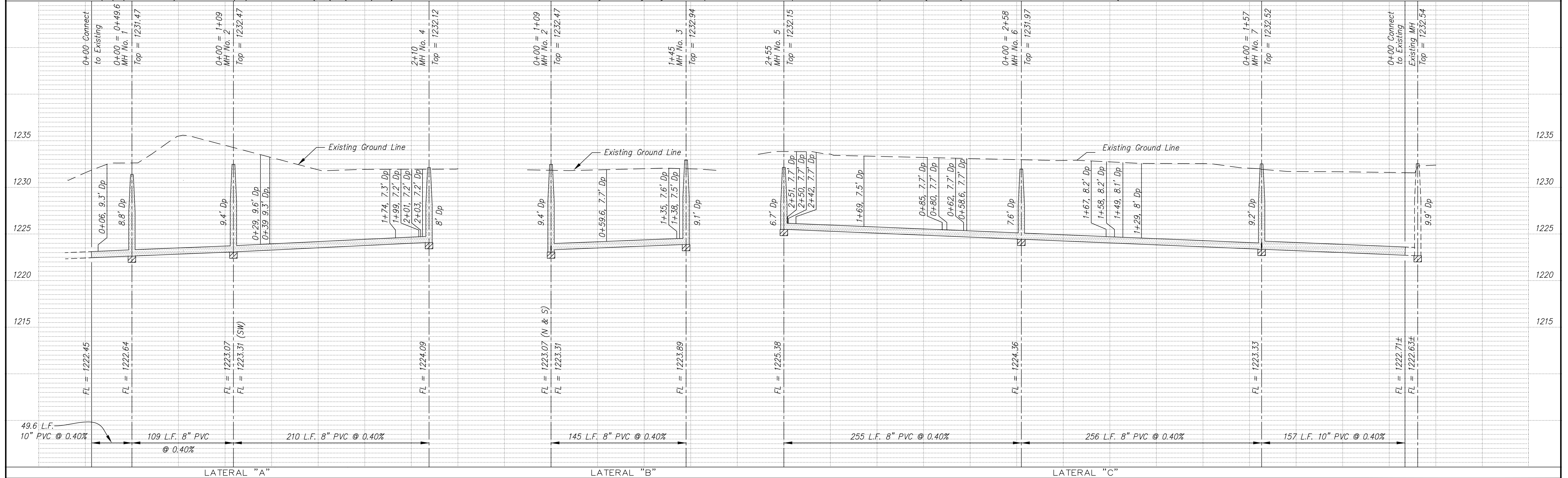
GBM #337 N Cap Bolt on FH at NW Corner of Huntington Rd. and Sherwood Lane Elev = 1232.82

SCALE

PLAN: 1" = 50' Horiz & Vert PROFILE: Horiz 1" = 50' Vert 1" = 5'

See Quarter Section Map Book Page

217



| NO. | REVISIONS | DATE | BY |
|-----|-----------|------|----|
|     |           |      |    |

PROJECT TITLE: **Sanitary Sewer As-Built Drawing**

|                 |         |           |
|-----------------|---------|-----------|
| CONTRACTOR:     | DESIGN: | CHECKED:  |
| SCALE: As Shown | DRAWN:  | APPROVED: |

|  |                      |                   |
|--|----------------------|-------------------|
| CITY OF SALINA<br>Dept. of Public Works<br>Engineering Division<br>300 WEST ASH SALINA, KANSAS 67401<br>PH: 785.309.5725 FAX: 785.309.5713 | DATE: Dec 2007       | PROJ. NO: 06-1612 |
|  | FILENAME: 690asb.dwg | SHEET: OF         |