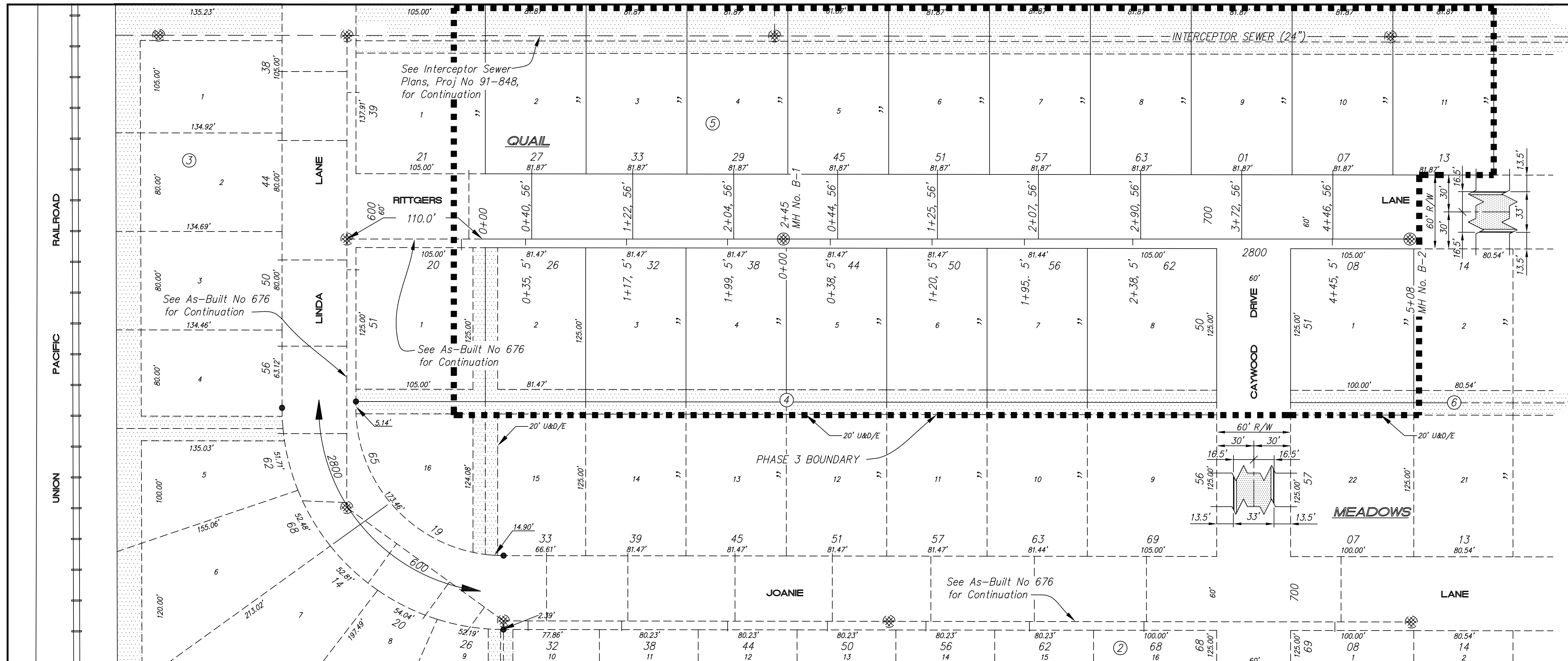


689

QUAIL MEADOWS
ADDITION - PHASE III
April 2006



NOTE: Sanitary Sewer Service connection depths are from the Existing Ground Line at the time of construction.

NOTE: Distance from back of curb to property line is based on the street being built in the center of the right-of-way.

NOTE: All Streets are 33' back to back of curb. Right-of-Ways are 60' unless noted otherwise.

NOTE: All Sanitary Sewer Services are 4" unless noted otherwise.

NOTE: All Sanitary Sewer mains are 8" unless noted otherwise.

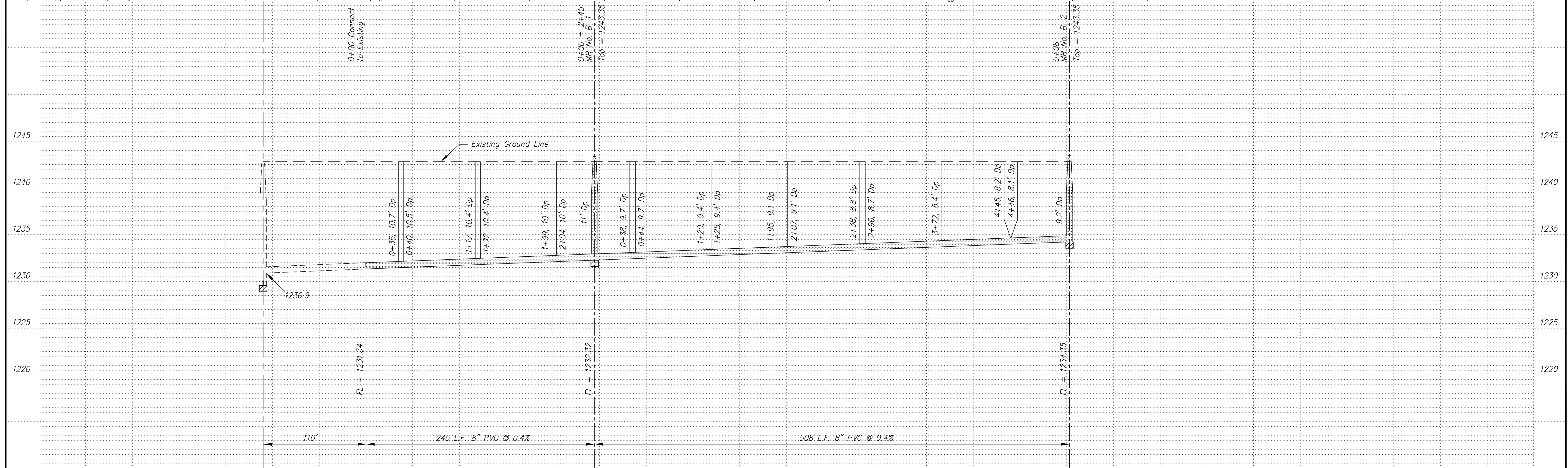
BM CMB #265 U.S.G.S. Brass Disk in Concrete Stamped "C-292-1952" 29' West of the West Rail & 40' North of Centerline Schilling Rd. Elev = 1245.22

SCALE

PLAN: 1" = 50'
Horiz & Vert
PROFILE: 1" = 50'
Horiz 1" = 50'
Vert 1" = 5'

See Quarter Section Map Book Page

248



NO.	REVISIONS	DATE	BY

PROJECT TITLE
Sanitary Sewer As-Built Drawing

CONTRACTOR	DESIGN	CHECKED
SCALE: As Shown	DRAWN	APPROVED

CITY OF SALINA Dept. of Public Works Engineering Division 300 WEST ASH SALINA, KANSAS 67401 PH: 785.309.5725 FAX: 785.309.5713	DATE: Dec 2007	PROJ. NO: 06-1608
	FILENAME: 689asb.dwg	SHEET: OF