

688

RIVER TRAIL ADDITION  
PHASE 5  
AUGUST 2007

NOTE: Sanitary Sewer Service connection depths are from the Existing Ground Line at the time of construction.

NOTE: Distance from back of curb to property line is based on the street being built in the center of the right-of-way.

NOTE: All Streets are 33' back to back of curb. Right-of-Ways are 60' unless noted otherwise.

NOTE: All Sanitary Sewer Services are 4" unless noted otherwise.

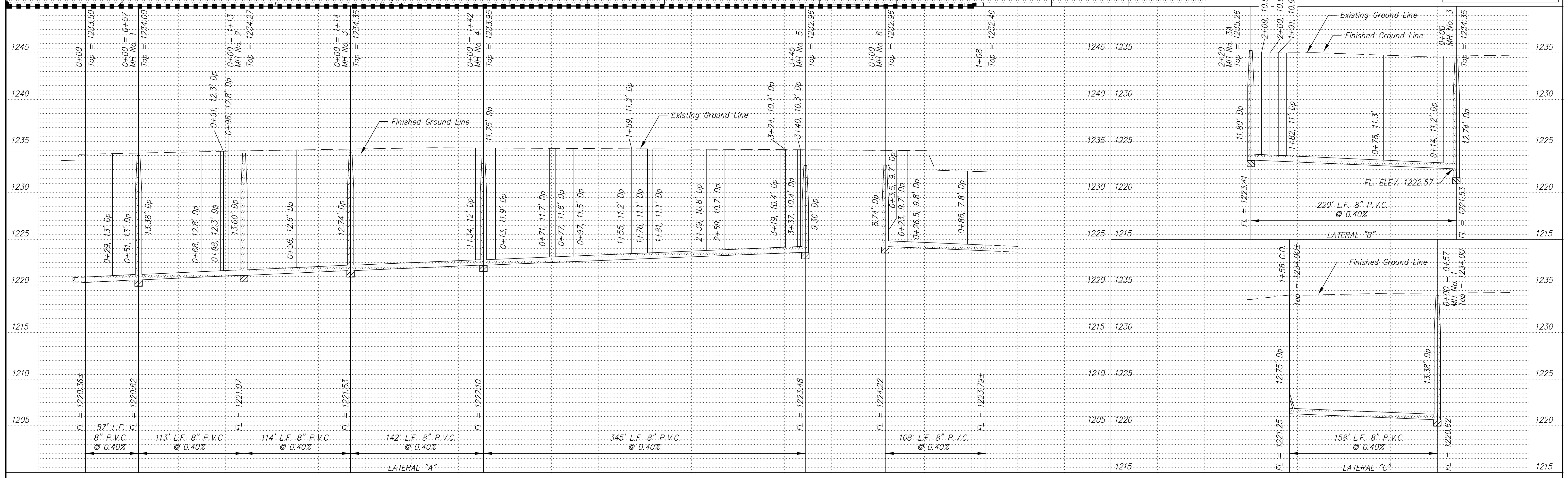
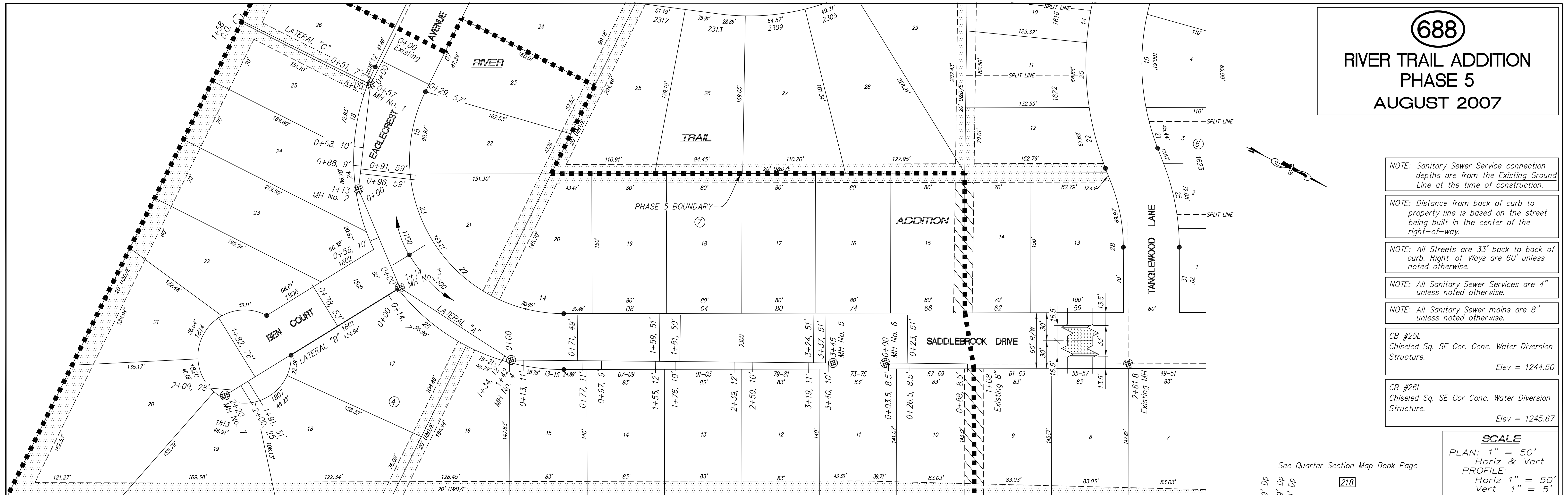
NOTE: All Sanitary Sewer mains are 8" unless noted otherwise.

CB #25L  
Chiseled Sq. SE Cor. Conc. Water Diversion Structure.  
Elev = 1244.50

CB #26L  
Chiseled Sq. SE Cor. Conc. Water Diversion Structure.  
Elev = 1245.67

SCALE

PLAN: 1" = 50'  
Horiz & Vert  
PROFILE: 1" = 50'  
Horiz 1" = 50'  
Vert 1" = 5'



NO.	REVISIONS	DATE	BY

PROJECT TITLE  
**Sanitary Sewer As-Built Drawing**

CONTRACTOR STEVENS CONTRACTORS	DESIGN	CHECKED	CITY OF SALINA Dept. of Public Works Engineering Division	DATE Nov 2007	PROJ. NO. PRIVATE
SCALE As Shown	DRAWN	APPROVED		FILENAME 688osb.dwg	SHEET OF