

686
BELMONT PLAZA
ADDITION
1996

NOTE: Distance from back of curb to property line is based on the street being built in the center of the right-of-way.

NOTE: All Streets are 33' back to back of curb. Right-of-Ways are 60' unless noted otherwise.

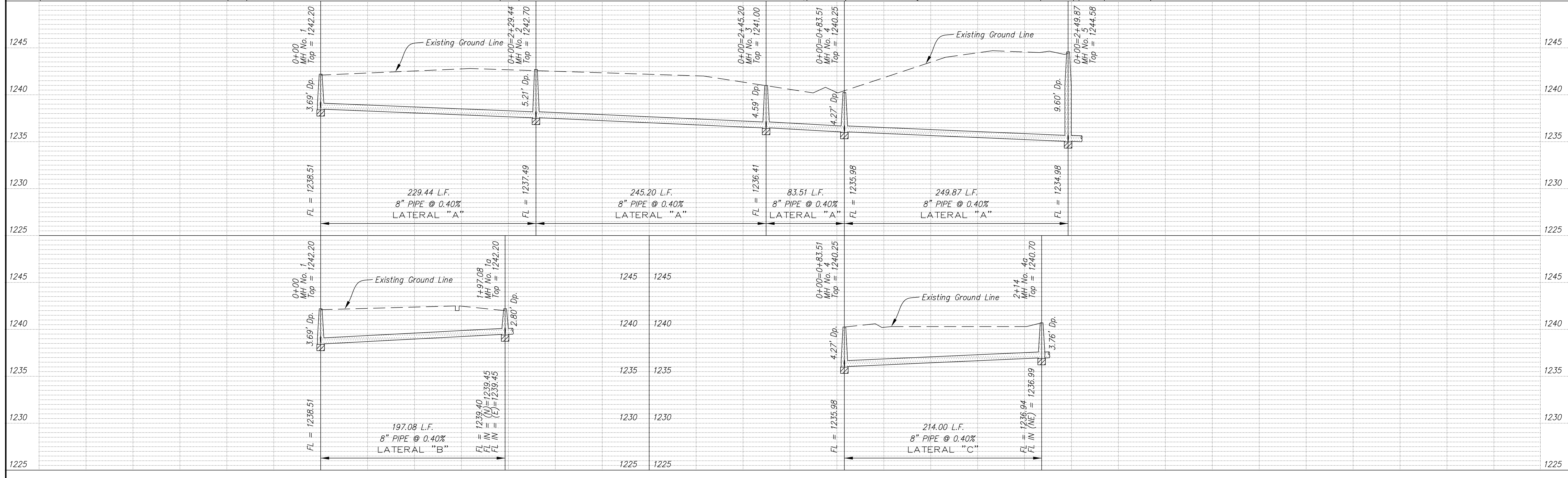
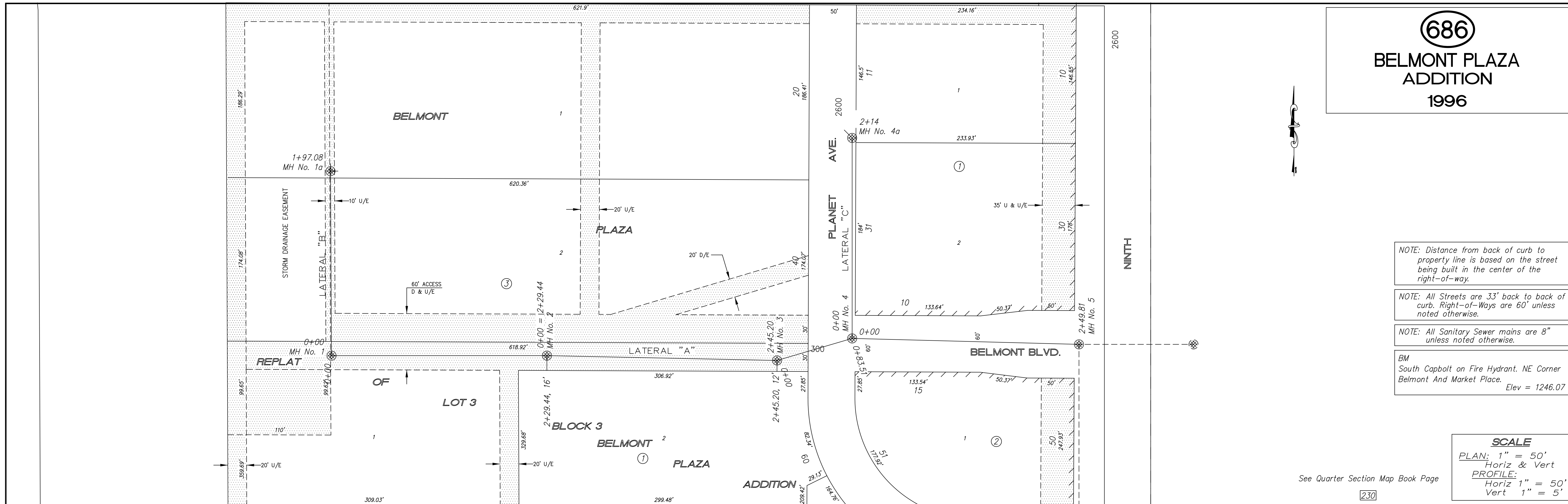
NOTE: All Sanitary Sewer mains are 8" unless noted otherwise.

BM
 South Capbolt on Fire Hydrant, NE Corner Belmont And Market Place.
 Elev = 1246.07

SCALE
 PLAN: 1" = 50'
 Horiz & Vert
 PROFILE: 1" = 50'
 Horiz 1" = 50'
 Vert 1" = 5'

See Quarter Section Map Book Page

230



PROJECT TITLE						CONTRACTOR		DESIGN		CHECKED		CITY OF SALINA Dept. of Public Works Engineering Division		DATE		PROJ. NO.	
Sanitary Sewer As-Built Drawing						As Shown						300 WEST ASH PH: 785.309.5725		Feb 2007			
NO. REVISIONS DATE BY						SCALE		DRAWN		APPROVED		SHEET		OF			
												686osb.dwg					