

685

GOLDEN EAGLE ESTATES ADD. NO. 4 April 2006

NOTE: Sanitary Sewer Service connection depths are from the Existing Ground Line at the time of construction.

NOTE: Distance from back of curb to property line is based on the street being built in the center of the right-of-way.

NOTE: All Streets are 33' back to back of curb. Right-of-Ways are 60' unless noted otherwise.

NOTE: All Sanitary Sewer mains are 8" unless noted otherwise.

NOTE: All Sanitary Sewer Services are 4" unless noted otherwise.

CBM #337 N Cap Bolt on FH at NW Corner of Huntington Rd. and Sherwood Lane Elev = 1232.82

CBM #195 E Cap Bolt on FH at NW Corner of Sarah & Mission Elev = 1232.77

CBM #25L Chiseled Sq. SE Corner Concrete Well Diversion Structure Elev = 1244.50

NOTE: Services were run to Property Line at the time of construction

SCALE PLAN: 1" = 50' Horiz & Vert PROFILE: 1" = 50' Horiz 1" = 5' Vert

See Quarter Section Map Book Page

217

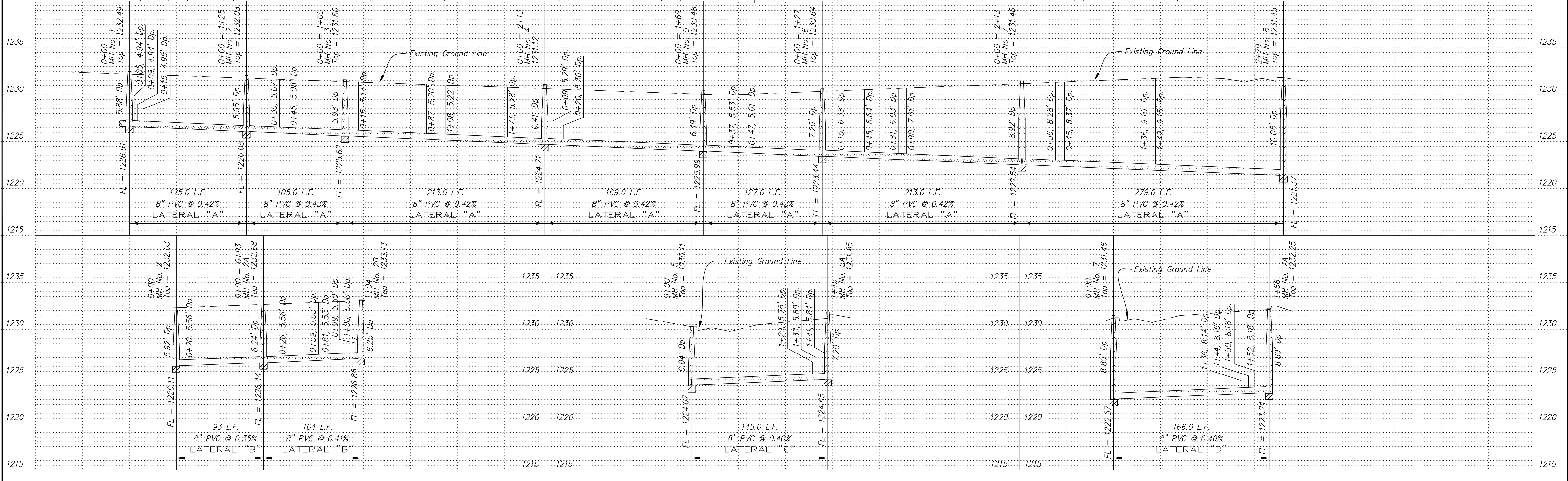
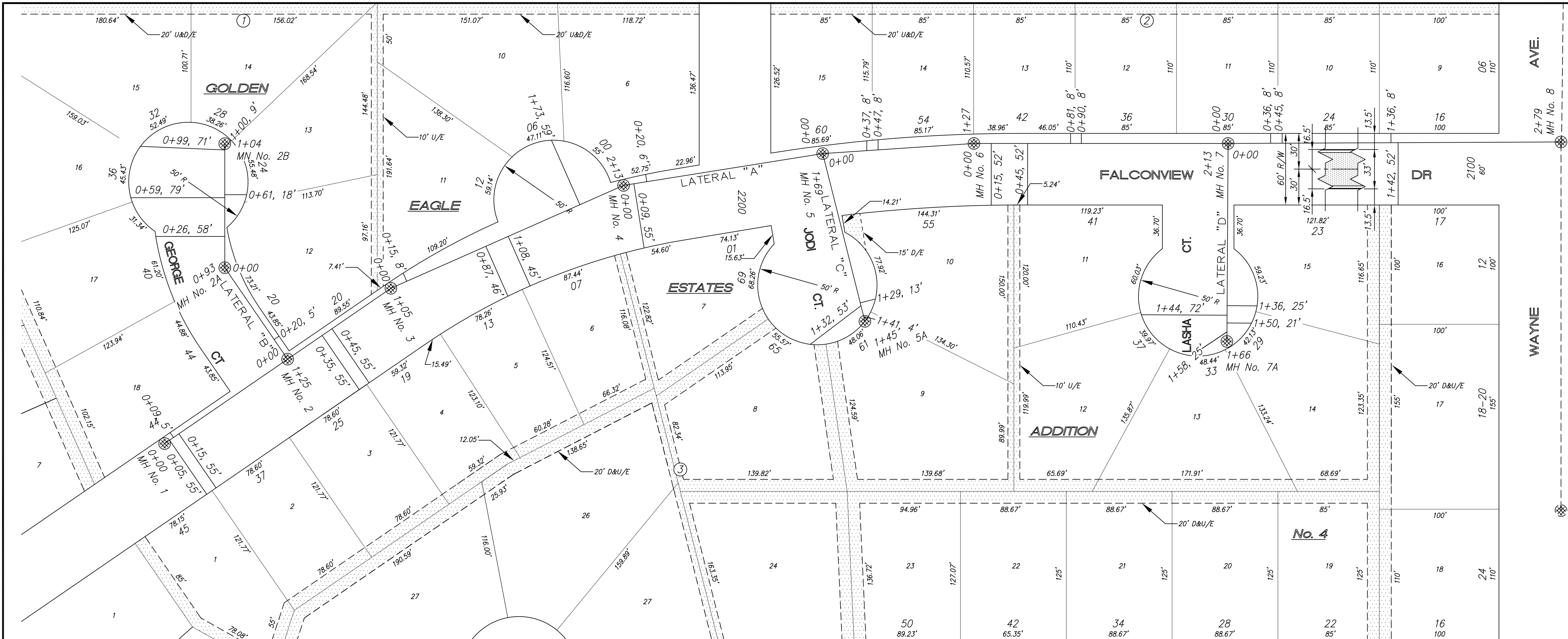


Table with columns for NO., REVISIONS, DATE, BY.

PROJECT TITLE: Sanitary Sewer As-Built Drawing

CONTRACTOR: STEVENS CONTRACTORS SCALE: As Shown

CITY OF SALINA Dept. of Public Works Engineering Division

DATE: Nov 2007 PROJ. NO: 05-1554 SHEET: OF