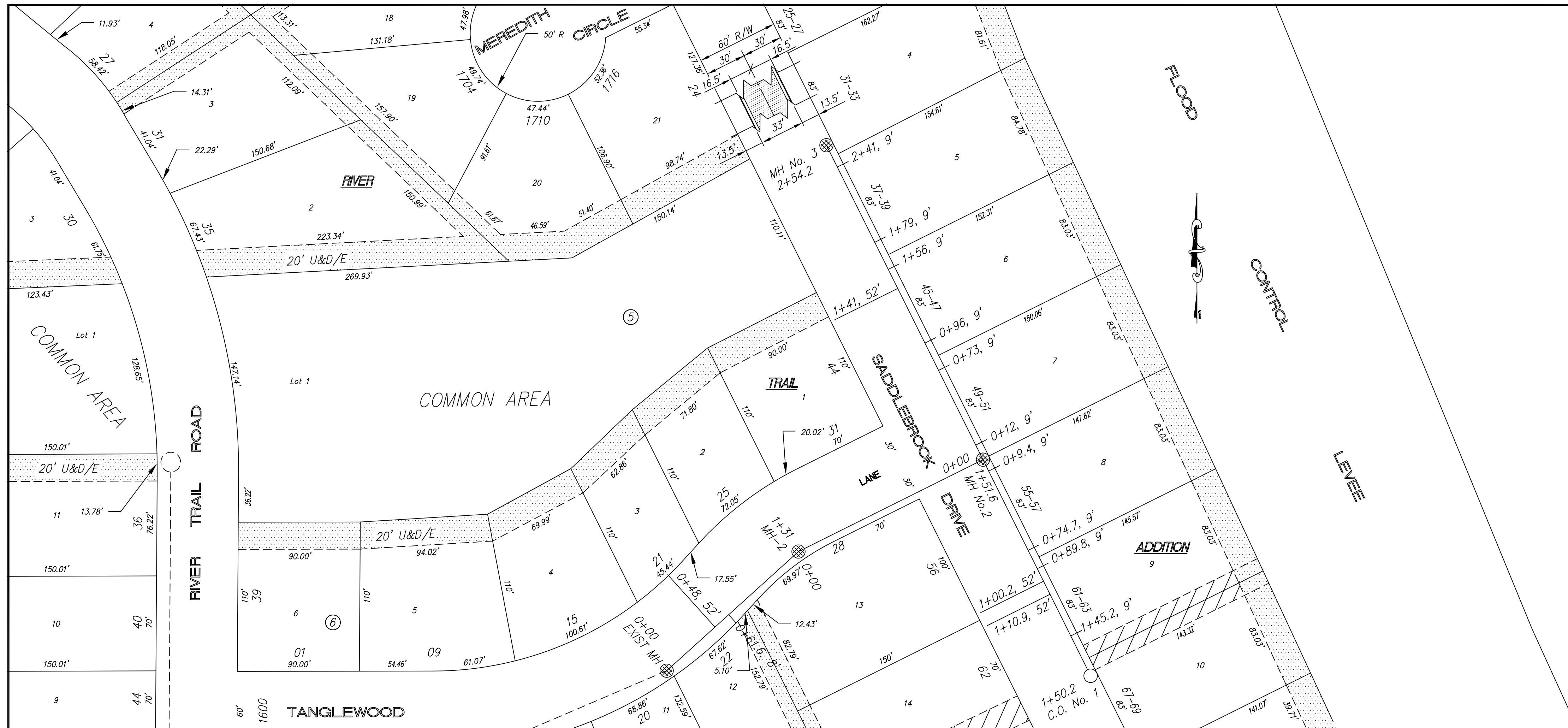


684

RIVER TRAIL ADDITION
PHASE 4
January 2007



NOTE: Sanitary Sewer Service connection depths are from the Existing Ground Line at the time of construction.

NOTE: Distance from back of curb to property line is based on the street being built in the center of the right-of-way.

NOTE: All Streets are 33' back to back of curb. Right-of-Ways are 60' unless noted otherwise.

NOTE: All Sanitary Sewer Services are 4" unless noted otherwise.

NOTE: All Sanitary Sewer mains are 8" unless noted otherwise.

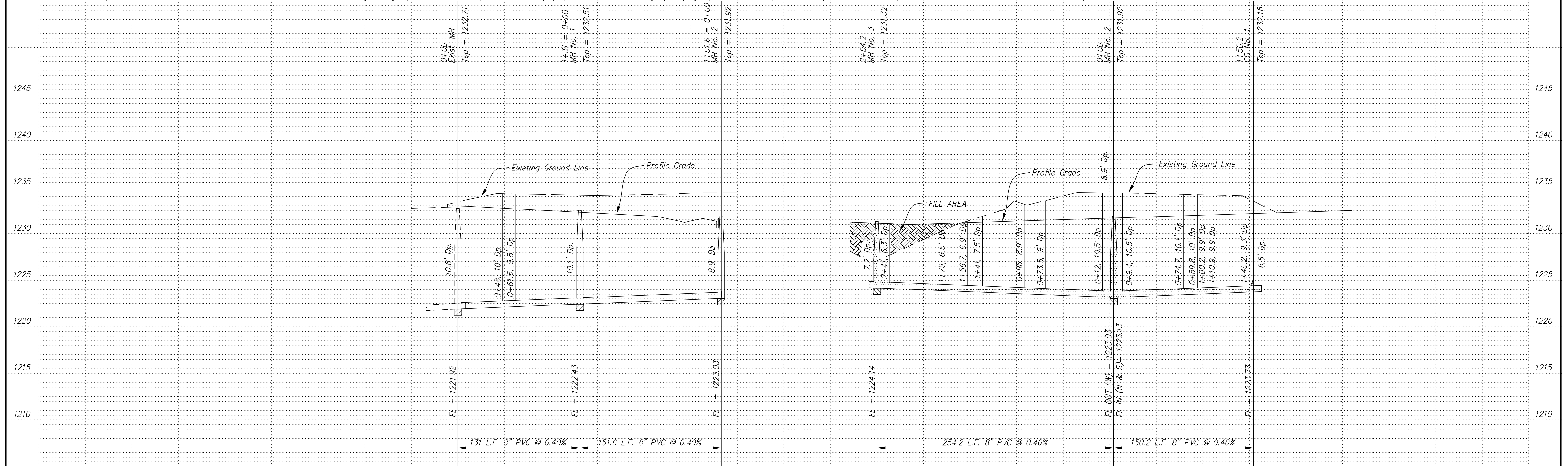
BM 1: Chiseled square, SE cor concrete well diversion structure
Elev = 1245.67

SCALE

PLAN: 1" = 50'
Horiz & Vert
PROFILE: 1" = 50'
Horiz 1" = 50'
Vert 1" = 5'

See Quarter Section Map Book Page

218



NO.	REVISIONS	DATE	BY

PROJECT TITLE: **Sanitary Sewer As-Built Drawing**

CONTRACTOR:	DESIGN:	CHECKED:
SCALE: As Shown	DRAWN:	APPROVED:

CITY OF SALINA Dept. of Public Works Engineering Division 300 WEST ASH SALINA, KANSAS 67401 PH: 785.309.5725 FAX: 785.309.5713	DATE: NOV 2007	PROJ. NO: 05-1536
	FILENAME: 684osb.dwg	SHEET: OF: