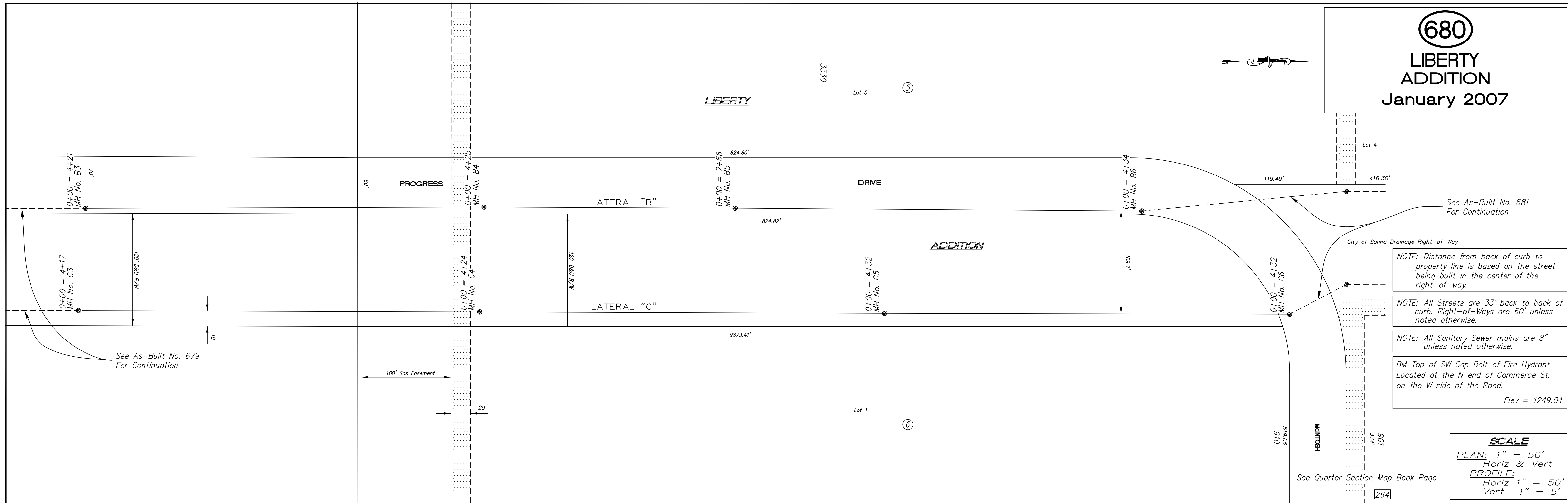


(680)
LIBERTY
ADDITION
January 2007



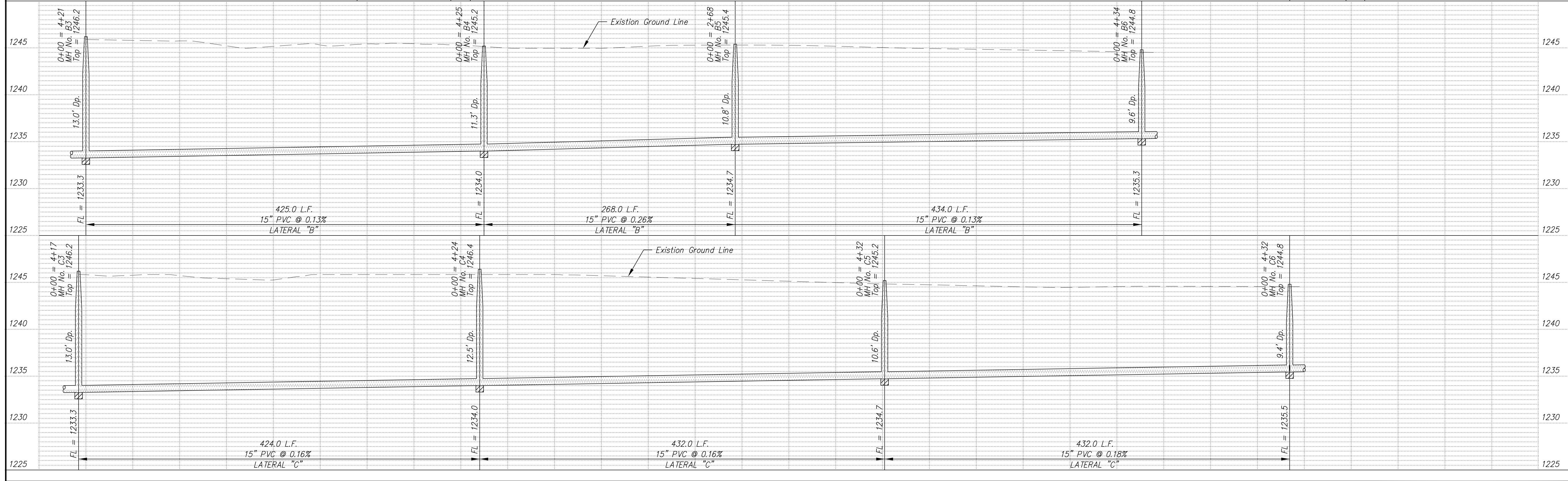
NOTE: Distance from back of curb to property line is based on the street being built in the center of the right-of-way.

NOTE: All Streets are 33' back to back of curb. Right-of-Ways are 60' unless noted otherwise.

NOTE: All Sanitary Sewer mains are 8" unless noted otherwise.

BM Top of SW Cap Bolt of Fire Hydrant Located at the N end of Commerce St. on the W side of the Road.
 Elev = 1249.04

SCALE
 PLAN: 1" = 50'
 Horiz & Vert
 PROFILE: 1" = 50'
 Horiz 1" = 50'
 Vert 1" = 5'



PROJECT TITLE						CONTRACTOR		DESIGN		CHECKED		CITY OF SALINA Dept. of Public Works Engineering Division		DATE		PROJ. NO.	
Sanitary Sewer As-Built Drawing						As Shown						300 WEST ASH PH: 785.309.5725		Jan 2007		06-1583	
NO. REVISIONS DATE BY						SCALE		DRAWN		APPROVED		FILENAME		SHEET		OF	
												680osb.dwg					