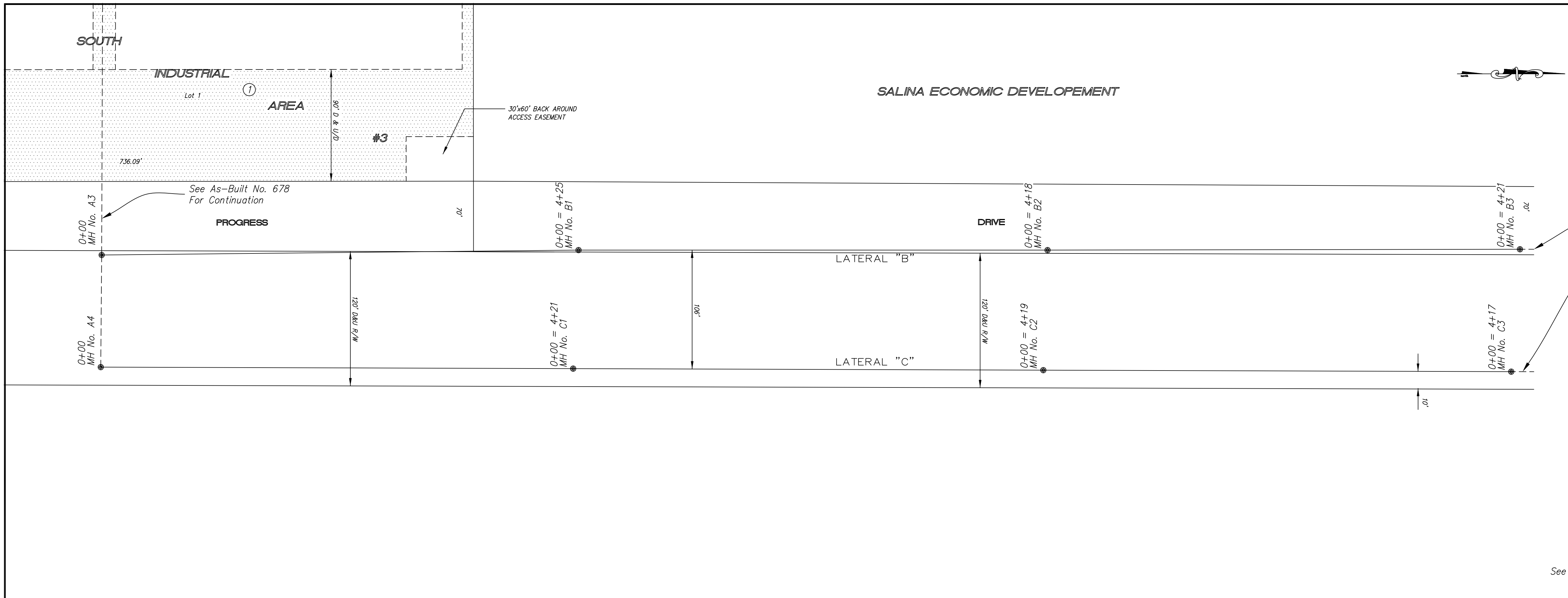


679
LIBERTY
ADDITION
January 2007



NOTE: Distance from back of curb to property line is based on the street being built in the center of the right-of-way.

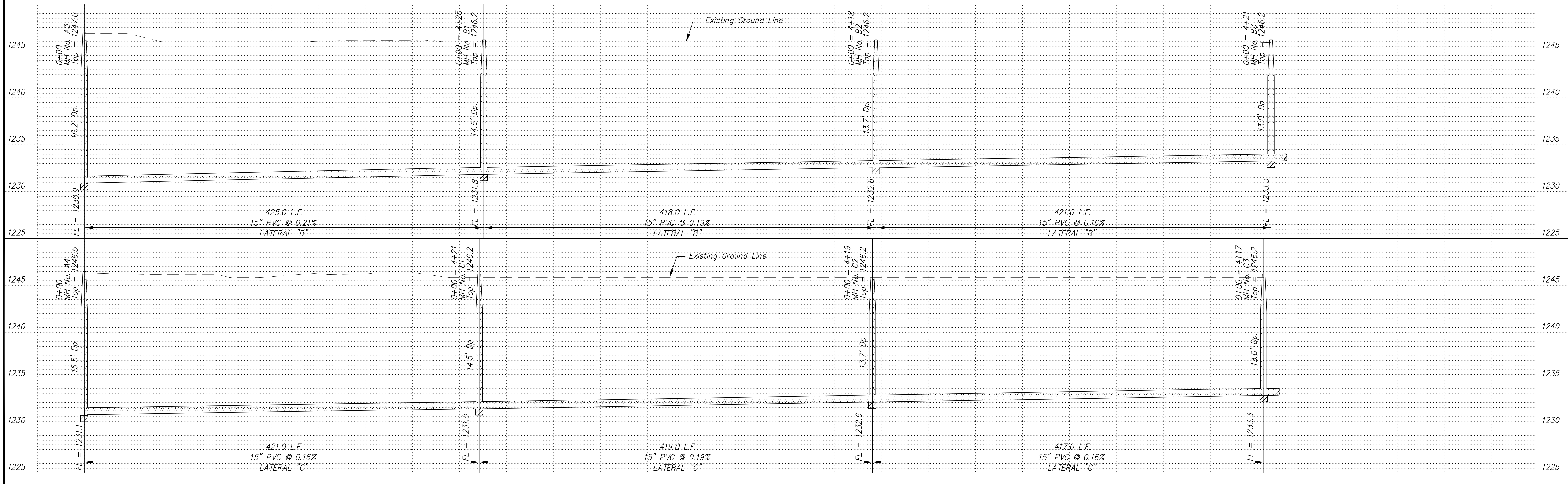
NOTE: All Streets are 33' back to back of curb. Right-of-Ways are 60' unless noted otherwise.

NOTE: All Sanitary Sewer mains are 8" unless noted otherwise.

BM Top of SW Cap Bolt of Fire Hydrant Located at the N end of Commerce St. on the W side of the Road.
 Elev = 1249.04

SCALE
 PLAN: 1" = 50'
 Horiz & Vert
 PROFILE: 1" = 50'
 Horiz 1" = 50'
 Vert 1" = 5'

See Quarter Section Map Book Page **280**



| NO. | REVISIONS | DATE | BY |
|-----|-----------|------|----|
| | | | |

PROJECT TITLE
Sanitary Sewer As-Built Drawing

| | | |
|-----------------|--------|----------|
| CONTRACTOR | DESIGN | CHECKED |
| SCALE: As Shown | DRAWN | APPROVED |

| | | |
|---|----------------------|--------------------|
| CITY OF SALINA Dept. of Public Works Engineering Division 300 WEST ASH SALINA, KANSAS 67401 PH: 785.309.5725 FAX: 785.309.5713 | DATE: Jan 2007 | PROJ. NO.: 06-1583 |
| | FILENAME: 679osb.dwg | SHEET: OF |