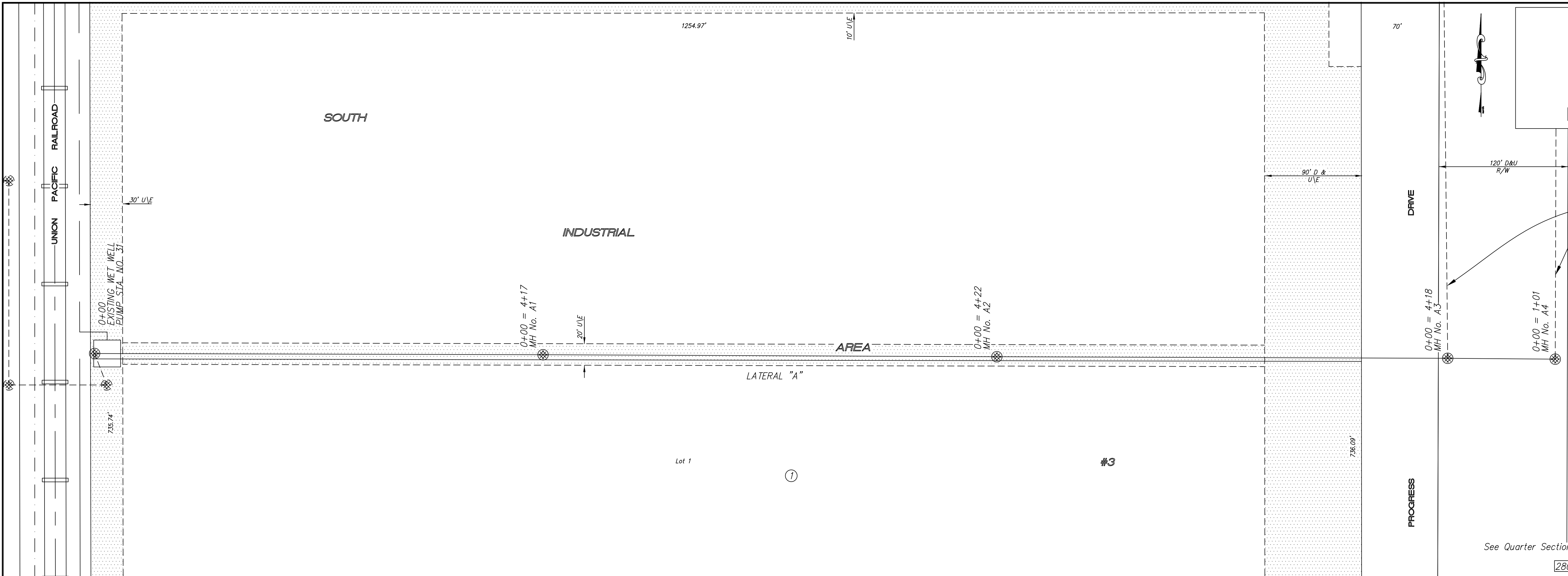


678
LIBERTY ADDITION
December 2006



NOTE: Distance from back of curb to property line is based on the street being built in the center of the right-of-way.

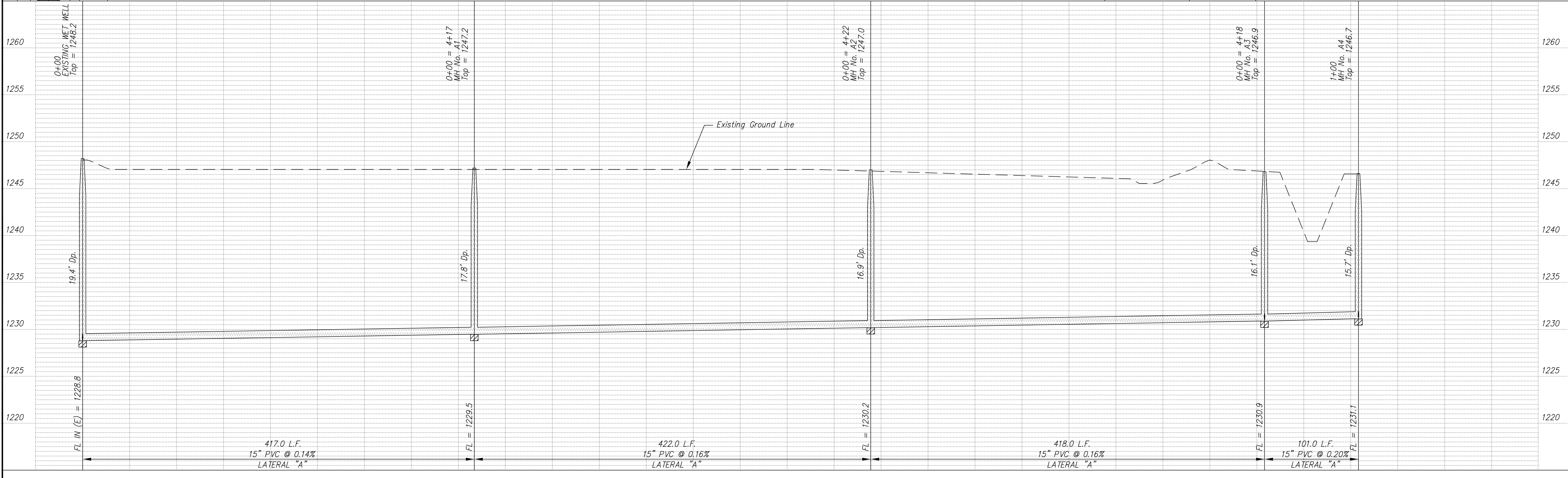
NOTE: All Streets are 33' back to back of curb. Right-of-Ways are 60' unless noted otherwise.

NOTE: All Sanitary Sewer mains are 8" unless noted otherwise.

BM "D 292" NGS Standard Disk set in Concrete and stamped "D 262 1952" Located 29' E of the E rail of the Union Pacific Railroad and 214' N of Waterwell Rd.
 Elev = 1248.15

SCALE
 PLAN: 1" = 50'
 Horiz & Vert
 PROFILE: 1" = 50'
 Horiz 1" = 50'
 Vert 1" = 5'

See Quarter Section Map Book Page 280



NO.	REVISIONS	DATE	BY

PROJECT TITLE
Sanitary Sewer As-Built Drawing

CONTRACTOR	DESIGN	CHECKED
SCALE	DRAWN	APPROVED
As Shown		

CITY OF SALINA Dept. of Public Works Engineering Division 300 WEST ASH SALINA, KANSAS 67401 PH: 785.309.5725 FAX: 785.309.5713	DATE	PROJ. NO.
	Jan 2007	06-1583
FILENAME	SHEET	OF
678osb.dwg		