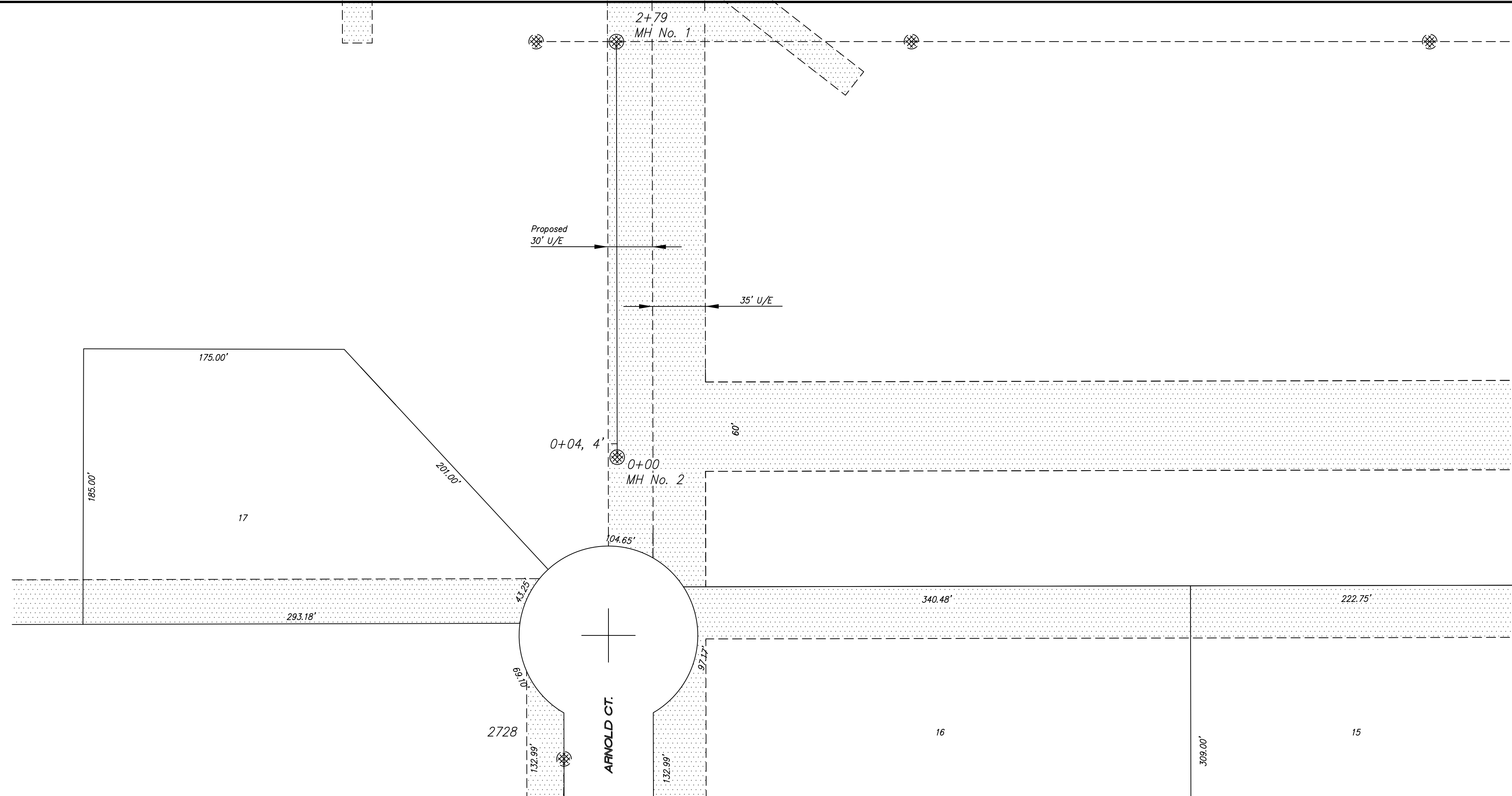


677

# EAGLE MED. HANGER JAN. 2007



NOTE: Distance from back of curb to property line is based on the street being built in the center of the right-of-way.

NOTE: All Streets are 33' back to back of curb. Right-of-Ways are 60' unless noted otherwise.

NOTE: All Sanitary Sewer mains are 8" unless noted otherwise. All Services

HCP 681 5/8" Bar & Aluminum Cap  
Stamped "SAA" NE=9657.795, 8470.890  
Elev. = 1257.98

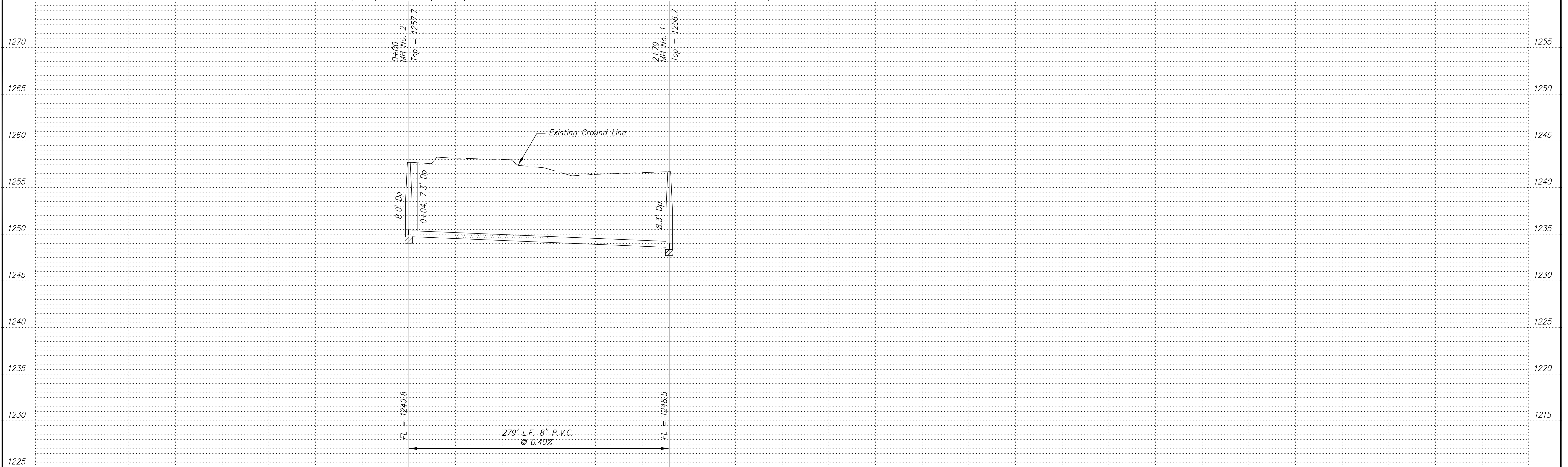
HCP 678 5/8" Bar & Aluminum Cap  
Stamped "SAA" NE=9379.240, 8524.627  
Elev. = 1258.70

### SCALE

PLAN: 1" = 50'  
Horiz & Vert  
PROFILE: 1" = 50'  
Horiz 1" = 50'  
Vert 1" = 5'

See Quarter Section Map Book Page

228 244



NO.	REVISIONS	DATE	BY	NO.	REVISIONS	DATE	BY

PROJECT TITLE  
**Sanitary Sewer As-Built Drawing**

CONTRACTOR	DESIGN	CHECKED	CITY OF SALINA Dept. of Public Works Engineering Division	DATE	PROJ. NO.
SCALE As Shown	DRAWN	APPROVED		JAN. 2007	06-1584
			300 WEST ASH SALINA, KANSAS 67401 PH: 785.309.5725 FAX: 785.309.5713	FILENAME 677osb.dwg	SHEET OF