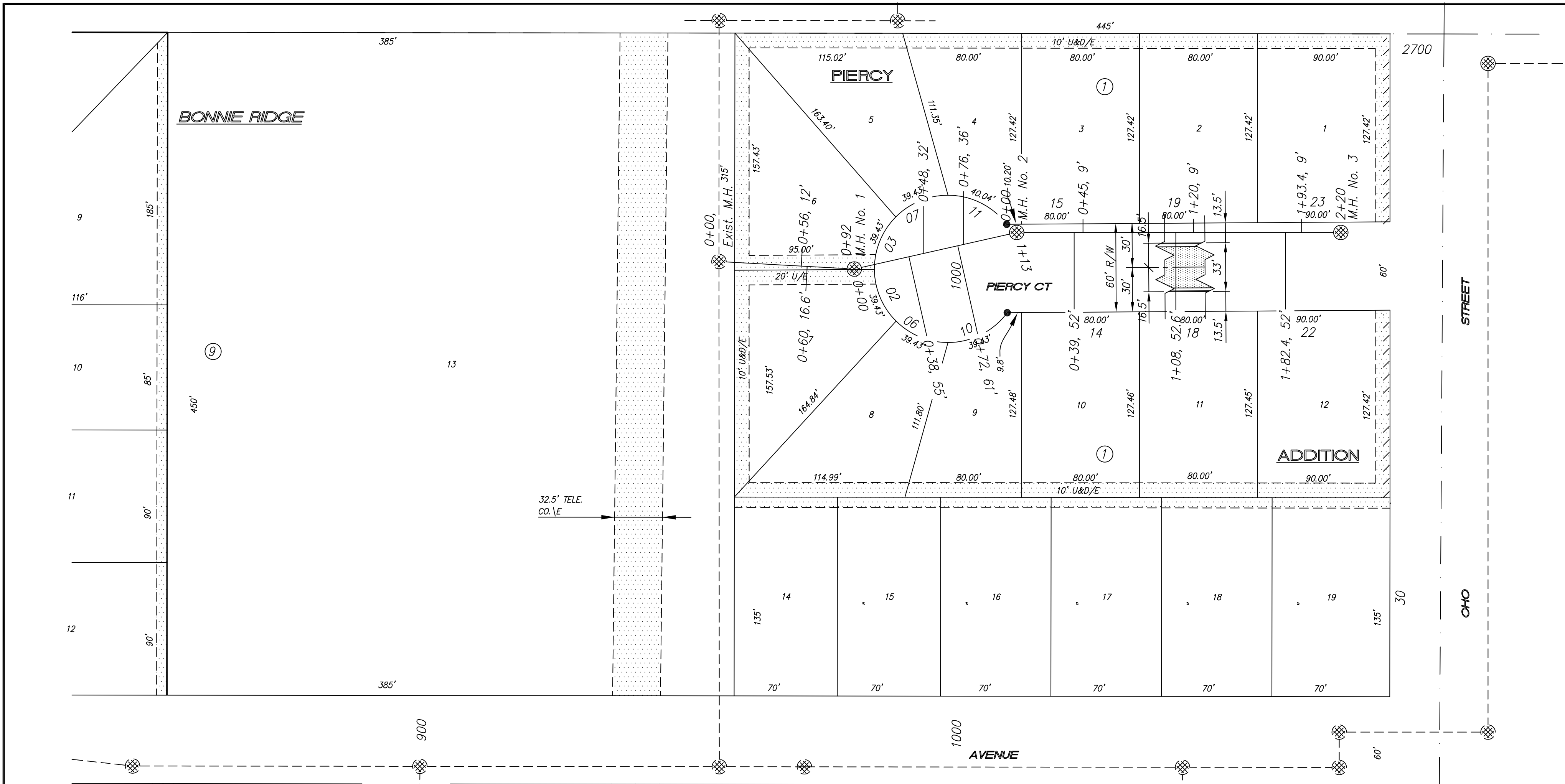


675
PIERCY ADDITION
APRIL 2006



NOTE: Distance from back of curb to property line is based on the street being built in the center of the right-of-way.

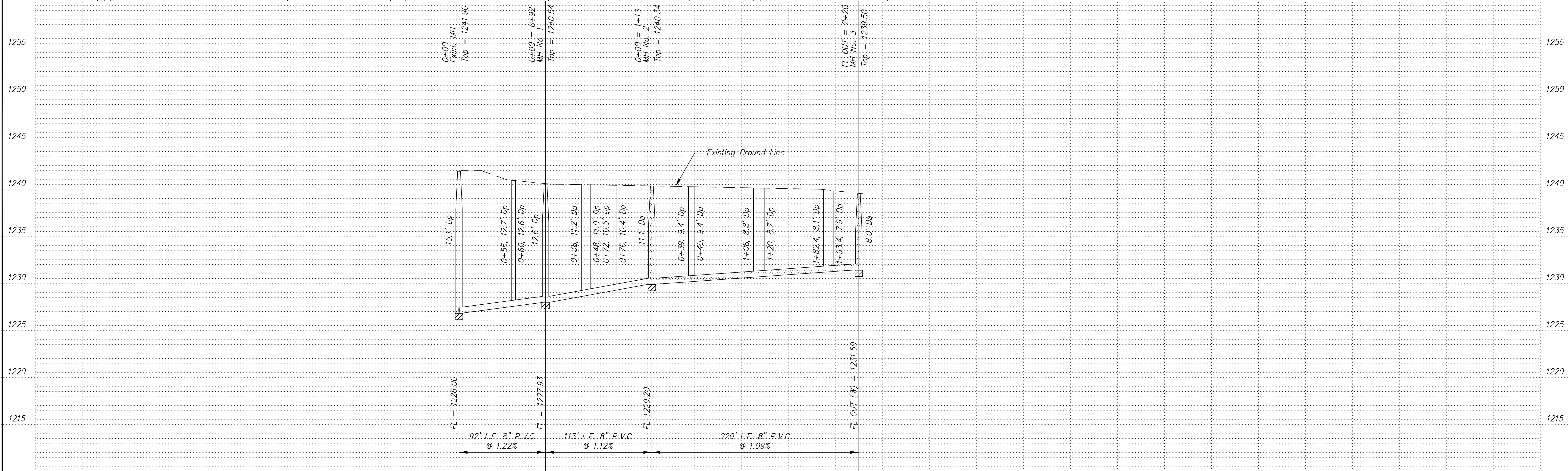
NOTE: All Streets are 33' back to back of curb. Right-of-Ways are 60' unless noted otherwise.

NOTE: All Sanitary Sewer mains are 8" unless noted otherwise. All Services

BM "X" Chiseled in Concrete Hubguard @ Southeast Corner of 2-4'x7' Reinforced Concrete Box. Approximately 760' North of SW Corner Southeast Quarter of Sect. 29-T14S-R2W in Markley Road's R/W
 N=4895.74; E=3677.55 Elev = 1269.87

SCALE
 PLAN: 1" = 50'
 Horiz & Vert
 PROFILE: 1" = 50'
 Horiz 1" = 50'
 Vert 1" = 5'

See Quarter Section Map Book Page **248**



NO.	REVISIONS	DATE	BY

PROJECT TITLE
Sanitary Sewer As-Built Drawing

CONTRACTOR	DESIGN	CHECKED
SCALE: As Shown	DRAWN	APPROVED

CITY OF SALINA Dept. of Public Works Engineering Division 300 WEST ASH SALINA, KANSAS 67401 PH: 785.309.5725 FAX: 785.309.5715	DATE	PROJ. NO.
	Jan. 2007 FILENAME: 675asb.dwg	SHEET: OF: