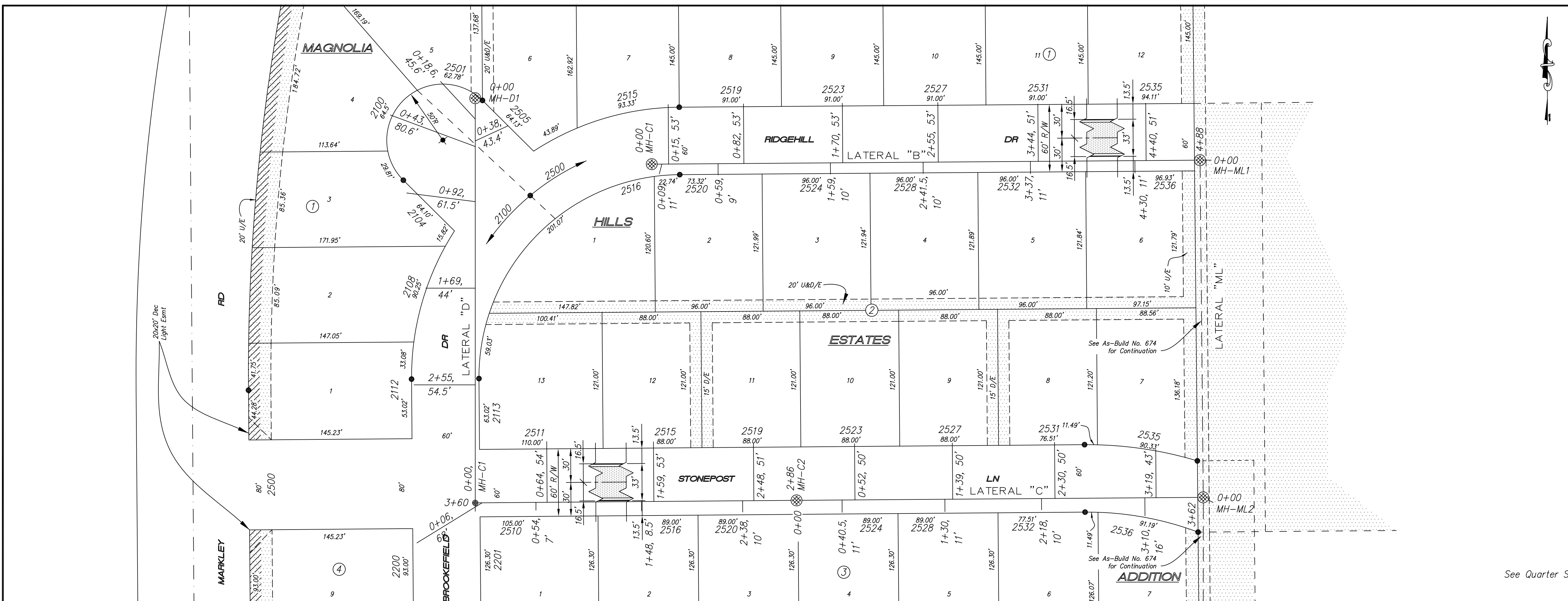


**673**  
**MAGNOLIA HILLS ESTATES**  
**ADDITION**  
 August 2006



NOTE: Distance from back of curb to property line is based on the street being built in the center of the right-of-way.

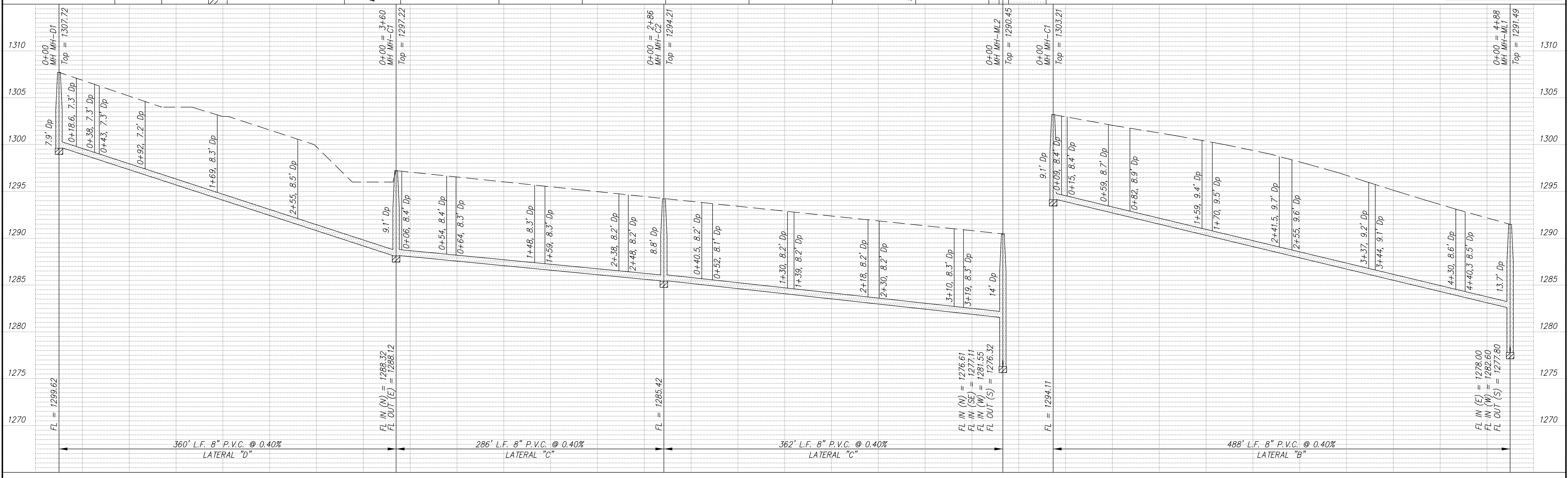
NOTE: All Streets are 33' back to back of curb. Right-of-Ways are 60' unless noted otherwise.

NOTE: All Sanitary Sewer mains are 8" unless noted otherwise.

BM "x" Chiseled in Concrete Hubguard @ Southeast Corner of 2-4'x7' Reinforced Concrete Box. Approximately 760' North of SW Corner Southeast Quarter of Sect. 29-114S-R2W in Markley Road's R/W  
 N=4895.74; E=3677.55 Elev = 1269.87

**SCALE**  
 PLAN: 1" = 50'  
 Horiz & Vert  
 PROFILE: 1" = 50'  
 Horiz  
 Vert 1" = 5'

See Quarter Section Map Book Page 220



NO.	REVISIONS	DATE	BY

PROJECT TITLE  
**Sanitary Sewer As-Built Drawing**

CONTRACTOR	DESIGN	CHECKED	<b>CITY OF SALINA</b> Dept. of Public Works Engineering Division 300 WEST ASH SALINA, KANSAS 67401 PH: 785.309.5725 FAX: 785.309.5713	DATE	PROJ. NO.
SCALE	DRAWN	APPROVED		Jan 2006	05-1556
As Shown			FILENAME	SHEET	OF
			673kd.dwg		