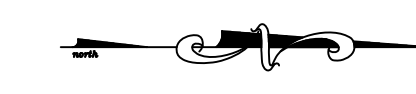


672

WOODLAND HILLS
PHASE 2
March 2006



NOTE: Distance from back of curb to property line is based on the street being built in the center of the right-of-way.

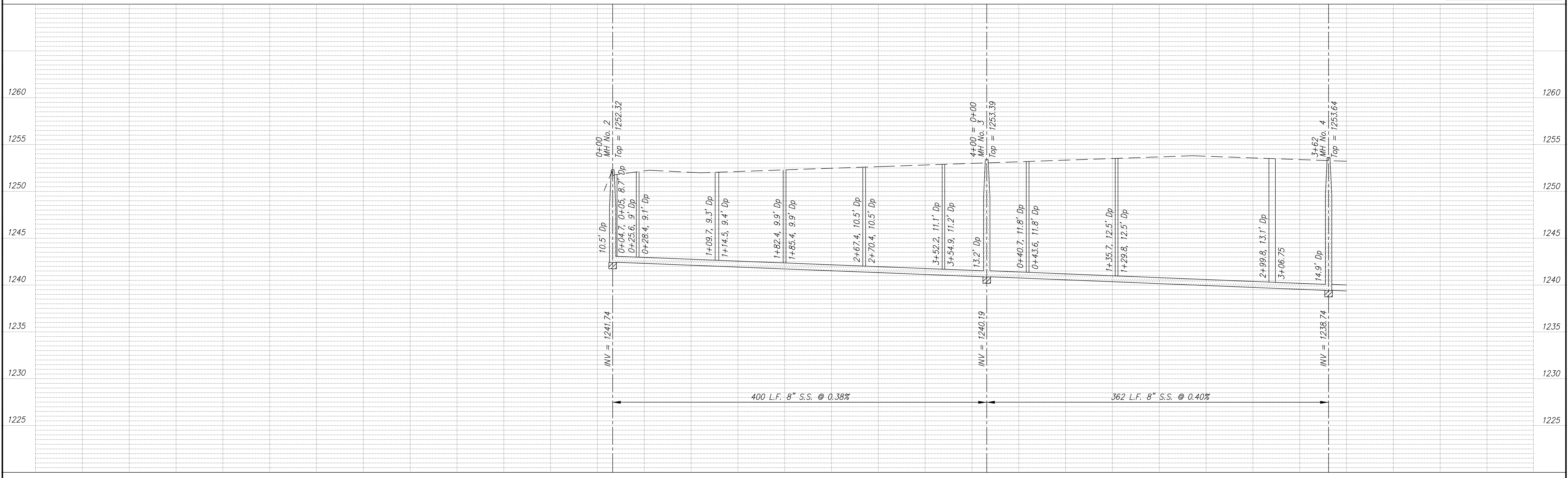
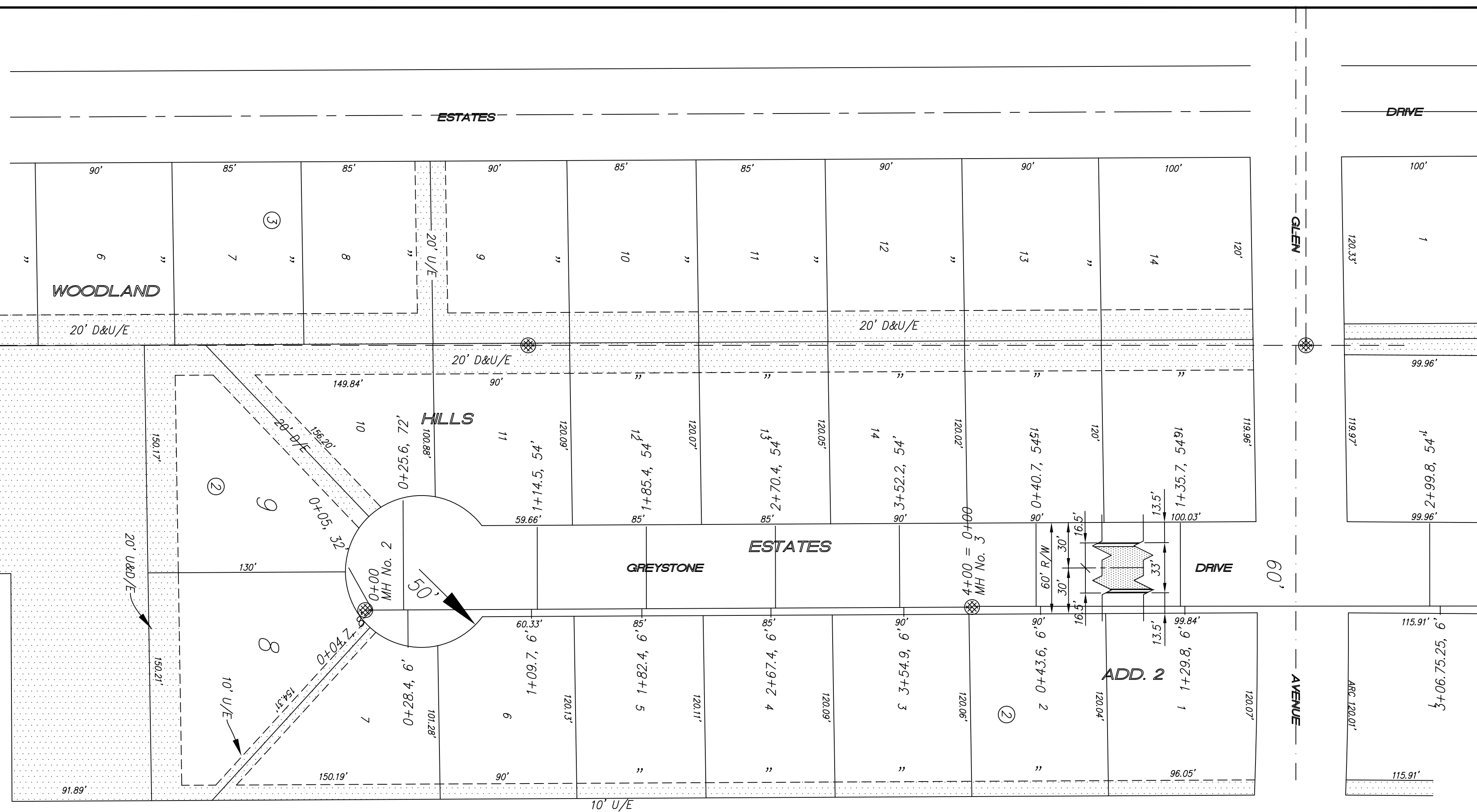
NOTE: All Streets are 33' back to back of curb. Right-of-Ways are 60' unless noted otherwise.

NOTE: All Sanitary Sewer mains are 8" unless noted otherwise.

BM No. 291: WSW cap bolt on FH, at NE corner Deborah and Bradley
Elev = 1260.44

SCALE
PLAN: 1" = 50'
Horiz & Vert
PROFILE: 1" = 50'
Horiz 1" = 50'
Vert 1" = 5'

See Quarter Section Map Book Page 156



PROJECT TITLE						CONTRACTOR		DESIGN		CHECKED		CITY OF SALINA Dept. of Public Works Engineering Division		DATE		PROJ. NO.	
Sanitary Sewer As-Built Drawing						As Shown						300 WEST ASH SALINA, KANSAS 67401 PH: 785.309.5725		Jan 2006		Private	
NO. REVISIONS DATE BY						SCALE		DRAWN		APPROVED		FILENAME		SHEET		OF	
												672k.dwg					